

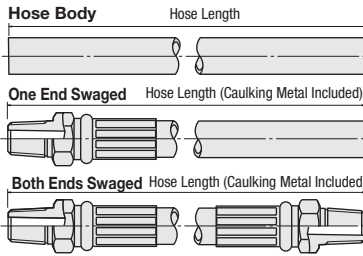
Non-PVC Hoses

-Standard / Vacuum-

Non-PVC Hoses

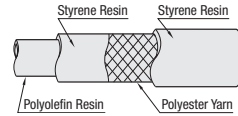


Type			Material			
Hose Only	One End Swaged	Both Ends Swaged	Main Material	Reinforcement	Swaging Parts	
					Shape A, B	C Shape
HOSPW	HOSPWK	HOSPWR	Polyolefin+Styrene Resin	Polyester Yarn	Joint Nipples :SUS304 Joint Covers :Aluminum	-
SNHRW	SNHRWK	SNHRWR	Polyolefin+Styrene Resin	Polyester Yarn	-	Joint Nipples :SUS316L Joint Covers :SUS304
SNHB	SNHBK	SNHBR	Polyolefin+Styrene Resin	Hard Steel Wire	-	Joint Nipples :SUS316L Joint Covers :SUS304

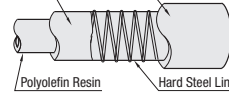


Structure

HOSPW SNHRW

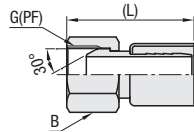


SNHB

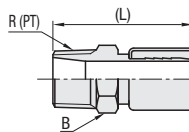


Swage Fitting Shapes

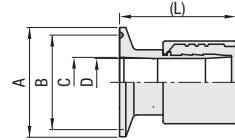
A Shape



B Shape



C Shape



Swage Fitting Shapes

Hose Nominal Inner Dia.	R (PT) G (PF)	A Shape		B Shape	
		B (Width Across Flats)	(L)	B (Width Across Flats)	(L)
6	1/4	14	43	17	37
9	3/8	17	47	19	43
12	1/2	22	53	24	49
19	3/4	27	65	30	59

Hose Nominal Inner Dia.	C Shape				
	A	B	C	D	(L)
1S	50.5	43.5	23	22	56
1.5S	50.5	43.5	35.7	34	73
2S	64	56.5	47.8	46	75

Hose Specifications

No.	HOSPW		HOSPW		Operation Temperature Range
	Inner Diameter (mm)	Outer Diameter (mm)	Thickness (mm)	Min. Bending Radius (mm)	
6	6	11	2.5	25	-5~60°C
9	9	15	3	50	
12	12	18	3	70	
19	19	26	3.5	130	
1S	25	33	4	170	
1.5S	38	48	5	230	
2S	50	62	6	290	
				Operating Pressure Mpa 23°C 60°C	
				0~1.0 0~0.5 0~0.8 0~0.5 0~0.8 0~0.4 0~0.8 0~0.4 0~0.5 0~0.3 0~0.4 0~0.2 0~0.3 0~0.2	

No.	SNHB		SNHB		Operation Temperature Range
	Inner Diameter (mm)	Outer Diameter (mm)	Thickness (mm)	Min. Bending Radius (mm)	
1S	25.0	33.0	4.0	180	-5~60°C
1.5S	38.0	48.0	5.0	390	
2S	50.0	62.0	6.0	520	
				Operating Pressure Mpa 23°C 60°C	
				-0.1~0.3 -0.1~0.1 -0.1~0.3 -0.1~0.1 -0.1~0.2 -0.1~0.1	

Part Number		Hose Nominal Inner Dia.	Hose Length 0.1m Increment	L Left End Swaged	R Right End Swaged
Type					
HOSPW HOSPWK HOSPWR	(Hose Only)	6	0.3~20.0	LA	RA
	(One End Swaged)	9			
	(Both Ends Swaged)	12			
		19			
SNHRW SNHRWK SNHRWR	(Hose Only)	1S	0.5~5.0	LC	RC
	(One End Swaged)	1.5S			
	(Both Ends Swaged)	2S			
SNHB SNHBK SNHBR	(Hose Only)	1S	0.5~5.0	LC	RC
	(One End Swaged)	1.5S			
	(Both Ends Swaged)	2S			



Order Example

Part Number	-	Hose Length	-	Shape L	-	Shape R
HOSPW6	-	1.5	-	LA	-	RA
SNHRWK1.5S	-	2.0	-	LC	-	RC
SNHBR2S	-	1.0	-	LC	-	RC

Feature of HOSPW and SNHRW

- Contains no chlorine ingredients.
- Semi-transparent wall enabling the transfer of materials to be observed
- Conforms to Food Sanitation Laws.

Features of SNHB

- Contains no chlorine ingredients.
- Conforms to Food Sanitation Laws.
- Reinforcement wire of hard steel provides high level of deformation resistance to enable vacuum.

CAUTION

- Do not use with fuel oils or solvents.
- Cleanse inside the hose before using with drinking water or food.
- For food plumbing, metal shape C is recommended for its safety in sanitary respect.
- Hoses shown above are for indoors only.
- Do not soak hoses or joints in drinking water, food or fluids. Fluid may remain behind the joint and unwanted bacteria may adhere to it.