

Comparing points of Similar Products | RoHS: Non-compliant. Running Test Criteria: Company internal standards based on GB (Run distance 1.5km). (Refer to P.2029 for details)

When ordering, select Part Number and Values from Selection Steps ①~③.



Ordering Example

Part Number (①Type · ②D) - ③Wheel Material  
C-CTBJ50 - T

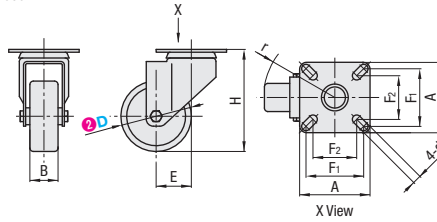
### Swivel Type



CAD 2D 3D

Type	Main Body		Wheel	Bearing	
	M Material	S Surface Treatment	M Material (Color)	Swiveling Part	Wheel
C-CTBJ	SPPC	Zinc Plating	TPE (Gray)	Incorporated	None

For characteristics of TPE, refer to P.2030.



Part Number		③ Wheel Material	H	A	F <sub>1</sub>	F <sub>2</sub>	d	B	E	r	Allowable Load (N)	Mass (g)
① Type	② D											
C-CTBJ	50	T (TPE)	73	50	38	34	6.2	20	25.5	50	400	170
	75		99.5	60	48	38	6.3	23	32	67.5	500	313

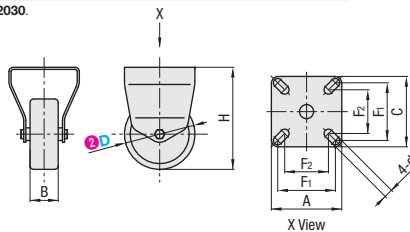
### Fixed Type



CAD 2D 3D

Type	Main Body		Wheel	Bearing	
	M Material	S Surface Treatment	M Material (Color)	Swiveling Part	Wheel
C-CTBK	SPPC	Zinc Plating	TPE (Gray)	None	None

For characteristics of TPE, refer to P.2030.



Part Number		③ Wheel Material	H	A	C	F <sub>1</sub>	F <sub>2</sub>	d	B	Allowable Load (N)	Mass (g)
① Type	② D										
C-CTBK	50	T (TPE)	73	53	50	38	34	6.2	20	400	121
	75		99.5	67.5	60	48	38	6.3	23	500	250

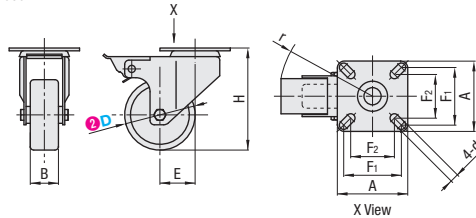
### Swivel Type + Stopper



CAD 2D 3D

Type	Main Body		Wheel	Bearing	
	M Material	S Surface Treatment	M Material (Color)	Swiveling Part	Wheel
C-CTBS	SPPC	Zinc Plating	TPE (Gray)	Incorporated	None

For characteristics of TPE, refer to P.2030.



Part Number		③ Wheel Material	H	A	F <sub>1</sub>	F <sub>2</sub>	d	B	E	r	Allowable Load (N)	Mass (g)
① Type	② D											
C-CTBS	50	T (TPE)	73	50	38	34	6.2	20	26	75	400	203
	75		99.5	60	48	38	6.3	23	32	87	500	349