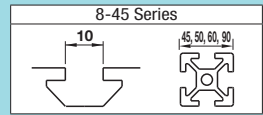
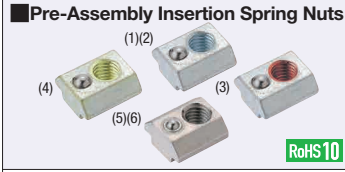


# Pre-Assembly Insertion Nuts for Aluminum Extrusions with Temporary Holding Function For 8-45 Series (Slot Width 10mm)



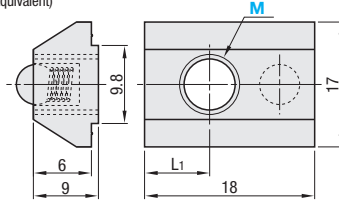
Tightening Torque P.552



**HNTU8** (S10C Equivalent)  
**PACK-HNTU8** (S10C Equivalent, 100/pkg.)  
**HNTUV8** (Thread Locking Adhesive Type, S10C Equivalent)  
**HNTUZ8** (Thread Locking Resin Coating Type, S10C Equivalent)  
**SHNTU8** (SUS304 Equivalent)  
**PACK-SHNTU8** (SUS304 Equivalent, 100/pkg.)

Reference Tightening Torque (N·m)	
M	S10C Equivalent, SUS304 Equivalent (Sintered)
8	23.5

Type	Material			
	Main Body	Ball	Spring	Surface Treatment
(1)HNTU8	S10C Equivalent	SUS304	SWP-A	Trivalent Chromate
(2)PACK-HNTU8				
(3)HNTUV8				
(4)HNTUZ8				
(5)SHNTU8	SUS304 Equivalent	SUS304	SUS304-WP8	-
(6)PACK-SHNTU8				



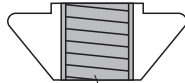
Part Number	M	L1	Unit Price			
			1 ~ 499 pc(s)	500-749	750-999	1000-1500
HNTU8 (S10C Equivalent)	3 4 5 6 8	6				
HNTUV8 (Thread Locking, S10C Equivalent)	8					
HNTUZ8 (Thread Locking, S10C Equivalent)	8					
SHNTU8 (SUS304 Equivalent)	4 5 6 8	5.5				

Ordering Example Part Number - M  
 HNTU8 - 8

**Bulk Packages** 100 pcs. per package

Part Number	M	L1	Unit Price (1 ~ 10 p(s).)	
			Package Price	Price per Pkg.
PACK-HNTU8 (S10C Equivalent)	4 5 6 8	6		
PACK-SHNTU8 (SUS304 Equivalent)	4 5 6 8	5.5		

### Thread Locking Type

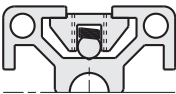


Thread locking compound applied inside of the tap.

Nuts with thread locker applied on the inside of tap. Reduce loosening caused by vibration during transportation and operation of equipment.  
 Thread Locking Adhesive: A microencapsulated anaerobic adhesive prevents thread loosening. Note that it requires a hardening time (72 hours at room temperature 25°C). The adhesive property is lost once loosened.  
 Resin Coating : Resin is coated along the threads. Although the thread locking effect may be less than adhesive type, it can be used repeatedly without hardening time required.

• Does not fall even if the extrusion is placed vertically.  
 Built-in spring prevents slips. Moves easily in the slot when pressed slightly by hand.

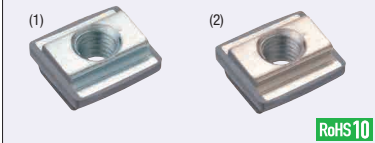
### Effect of Thread Locker (Reference)



	Characteristics	Loosening Torque after Tightening (1st time)	Remarks
Without Thread Locker	-	17.9N·m	-
Thread Locking Adhesive Type	<ul style="list-style-type: none"> <li>Prevents loosening effectively.</li> <li>Thread locking properties are lost once loosened.</li> <li>Requires a hardening time for adhesives (72 hours at room temperature 25°C) after tightening.</li> </ul>	25.6N·m	Test Conditions: Value (HNTU8-8) measured when a screw is loosened after being tightened at 23.5N·m and being dried for 72 hours at room temperature (25 °C).
Thread Locking Resin Coating Type	<ul style="list-style-type: none"> <li>Can be used repeatedly.</li> <li>(Thread locking effect decreases after repeated use.)</li> <li>Thread locking effect is immediately seen right after tightening.</li> </ul>	21.8N·m	Thread locking effect decreases after repeated use. Loosening Torque at 5 Repeats: 20.3N·m Measurement with HNTU8-8

Loosening torque values are for reference. Difference may occur depending on the clearances between screws and nuts.

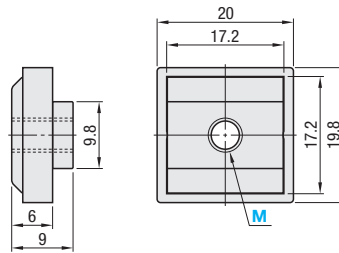
### Stopper Integrated Nuts



**HNTE8-45**  
**SHNTE8-45**

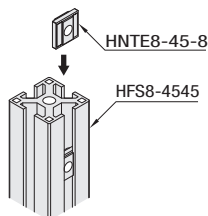
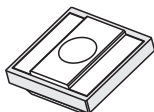
Reference Tightening Torque (N·m)	
M	S10C Equivalent
8	23.5

Type	Material		
	Main Body	Stopper	Surface Treatment
(1)HNTE8-45	S10C Equivalent	Polypropylene	Trivalent Chromate
(2)SHNTE8-45	SUS304		-



Part Number	M	Unit Price	Volume Discount Rate		
			1 ~ 499 pc(s)	500-749	750-999
HNTE8-45	4 5 6 8				
SHNTE8-45	4 5 6 8				

Ordering Example Part Number - M  
 HNTE8-45 - 8



Integrated Pre-Assembly Insertion Nuts and Stoppers.

The nuts do not slip off even if inserted into the vertically-placed extrusions.