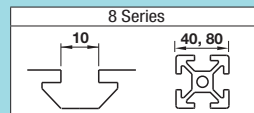


# Pre-Assembly Insertion Nuts for Aluminum Extrusions with Temporary Holding Function For 8 Series (Slot Width 10mm)



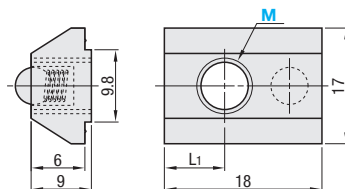
**Pre-Assembly Insertion Spring Nuts**

RoHS 10  
\* Electrically conductive

Type	Material			
	Main Body	Ball	Spring	Surface Treatment
(1)HNTU8 (2)PACK-HNTU8 (3)HNTUV8 (4)HNTUZ8	S10C Equivalent	SUS304	SWP-A	Trivalent Chromate
(5)SHNTU8* (6)PACK-SHNTU8*	SUS304 Equivalent	SUS304	SUS304-WP8	-

**HNTU8** (S10C Equivalent)  
**PACK-HNTU8** (S10C Equivalent, 100/pkg.)  
**HNTUV8** (Thread Locking Adhesive Type, S10C Equivalent)  
**HNTUZ8** (Thread Locking Resin Coating Type, S10C Equivalent)  
**SHNTU8** (SUS304 Equivalent)  
**PACK-SHNTU8** (SUS304 Equivalent, 100/pkg.)

Reference Tightening Torque (N·m)	
M	S10C Equivalent / SUS304 Equivalent (Sintered)
8	23.5



Part Number	M	L1	Unit Price 1 - 499 pc(s)	Volume Discount Rate 500-749	750-999	1000-1500
<b>HNTU8</b> (S10C Equivalent)	3 4 5 6 8	6				
<b>HNTUV8</b> (Thread Locking, S10C Equivalent)	8					
<b>HNTUZ8</b> (Thread Locking, S10C Equivalent)	4 5 6 8					
<b>SHNTU8</b> (SUS304 Equivalent)	4 5 6 8	5.5				

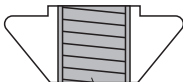
Ordering Example: Part Number - M  
**HNTU8** - 8

**Bulk Packages** 100 pcs. per package

Part Number	M	L1	Unit Price (1-10 pc(s.))	
			Package Price	Price per Pkg.
<b>PACK-HNTU8</b> (S10C Equivalent)	4 5 6 8	6		
<b>PACK-SHNTU8</b> (SUS304 Equivalent)	4 5 6 8	5.5		



**Thread Locking Type**

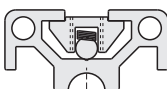


Nuts with thread locker applied on the inside of tap. Reduce loosening caused by vibration during transportation and operation of equipment.  
 Thread Locking Adhesive: A microencapsulated anaerobic adhesive prevents thread loosening. Note that it requires a hardening time (72 hours at room temperature 25°C). The adhesive property is lost once loosened.  
 Resin Coating : Resin is coated along the threads. Although the thread locking effect may be less than adhesive type, it can be used repeatedly without hardening time required.

• Does not fall even if the extrusion is placed vertically.  
 Built-in spring prevents slips. Moves easily in the slot when pressed slightly by hand.

Thread locking compound applied inside of the tap.

**Effect of Thread Locker (Reference)**



	Characteristics	Loosening Torque after Tightening (1st time)	Remarks
Without Thread Locker	-	17.9N·m	-
Thread Locking Adhesive Type	<ul style="list-style-type: none"> <li>Prevents loosening effectively.</li> <li>Thread locking properties are lost once loosened.</li> <li>Requires a hardening time for adhesives (72 hours at room temperature 25°C) after tightening.</li> </ul>	25.6N·m	Test Conditions: Value (HNTUV8-8) measured when a screw is loosened after being tightened at 23.5Nm and being dried for 72 hours at room temperature (25 °C).
Thread Locking Resin Coating Type	<ul style="list-style-type: none"> <li>Can be used repeatedly. (Thread locking effect decreases after repeated use.)</li> <li>Thread locking effect is immediately seen right after tightening.</li> </ul>	21.8N·m	Thread locking effect decreases after repeated use. Loosening Torque at 5 Repeats: 20.3N·m Measurement with HNTTZ8-8

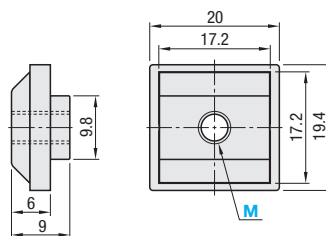
Loosening torque values are for reference. Difference may occur depending on the clearances between screws and nuts.

**Stopper Integrated Nuts**

RoHS 10

Type	Material		
	Main Body	Stopper	Surface Treatment
(1)HNTE8 (2)SHNTE8	S10C Equivalent SUS304	Polypropylene	Trivalent Chromate -

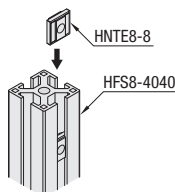
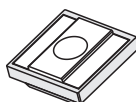
**HNTE8  
SHNTE8**



Reference Tightening Torque (N·m)	
M	S10C Equivalent / SUS304
8	23.5

Part Number	M	Unit Price 1 - 499 pc(s)	Volume Discount Rate 500-749	750-999	1000-1500
<b>HNTE8</b> <b>SHNTE8</b>	3 4 5 6 8				

Ordering Example: Part Number - M  
**HNTE8** - 8



Integrated Pre-Assembly Insertion Nuts and Stoppers.

The nuts do not slip off even if inserted into the vertically-placed extrusions.