

Holder

Side Mount, Flange Type

■ **Features:** Prepared for types with different hardness.



RoHS10

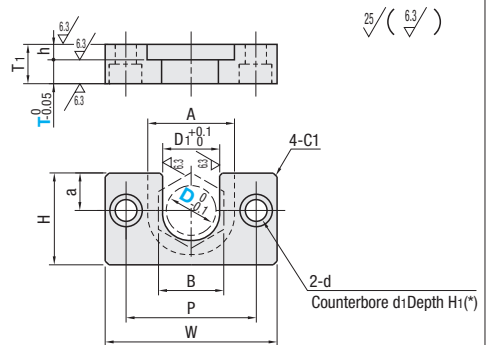
■ **T Fixed**

Type	M Material	S Surface Treatment	H Hardness
HLRA	S45C Equivalent	Salt-bath Nitriding	500HV~
HLRASW	SUS304 Equivalent	Nitriding Treatment	1000HV~
HLRASS		-	-
HLRAC	-	Hard Chrome Plating	700HV~

■ **T Configurable**

Type	M Material	S Surface Treatment	H Hardness
HLRAF	S45C Equivalent	Salt-bath Nitriding	500HV~

- ⊗ Salt-bath Nitriding may cause uneven color, which doesn't affect mechanical function.
- ⊗ For details on Salt-bath Nitriding, see P.1907.
- ⊗ * Holes for HLRAF are straight holes, not counterbored.



■ **T Fixed**

Part Number Type	D	T	B	D1	A	T1	h	W	H	a	P	d	d1	H1	Unit Price			
															HLRA	HLRASW	HLRASS	HLRAC
HLRA HLRASW HLRASS HLRAC	4	4	6	4.5	9	8	4	30	10	4	20	4.5	8	4.4				
	6		8	6.5	12			34	13	5	24							
	7		10	8	14			36	15	6	26							
	8	6	12	9	17	10	5	42	18	7	30	5.5	9.5	5.4				
	10		14	11	19	11		44	20	8	32							
	13		17	14	23	13		52	24	10	38							
	16	8	21	18	28	13	5	56	30	12	42	6.6	11	6.5				
	18		23	20	31	17		66	34	14	48							
	21		26	23	34	17		70	36	15	52							
	25	15	30	27	38	21	6	84	43	19	62	11	17	10.5				
27	20		32	29	40	27									7			

■ **T Configurable**

Part Number Type	D	T 1mm Increment	B	D1	A	T1	h	W	H	a	P	d	d1	H1	Unit Price													
																HLRAF	6	3~6	8	6.5	12	T+h	4	34	13	5	24	4.5
7	3~8	10	8	14	5.5	9.5	5.4																					
8	3~10	12	9	17				6.6	11	6.5																		
10	3~12	14	11	19	9	14	8.6																					
13	4~12	17	14	23							11	17	10.5															
16	5~15	21	18	28				6	84	43				19	62													
21	6~15	26	23	34													7	84	43	19	62							
25	8~20	30	27	38																								
27	12~20	32	29	40																								



Ordering Example
Part Number - T
HLRA8
HLRAF6 - 3

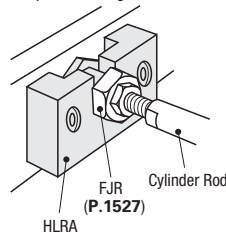


Example



Alterations
Part Number - (HC)
HLRA8 - HC30

App. Example of Floating Joints and Holders



Alteration Code	Height		
	HC	HC	
Spec.	⊗ Available for HLRA only.		
	⊗ The range of HC is shown as below.		
	D	HC 1mm Increment a	
	4	12-20	H2
	6	16-25	
	7	18-30	
	8	22-30	
	10	24-35	
	13	28-40	
16	36-45		
18	40-50		
21	42-50		
25	48-60		
⊗ Not applicable to D27.			