

# Floating Joints - Quick Connection Type

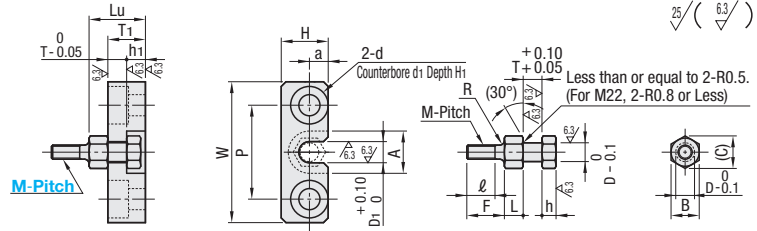
[Tapped] Cylinder Connector and Holder Set / Connector Only

■ **Features:** The tip is a cylinder connector connected to tapped type cylinder rod.



Type	Holder Type	Material	Surface Treatment	Hardness
FJDHA	HLRA	S45C Equivalent	Salt-bath Nitriding	500HV~

⚠ Salt-bath Nitriding may cause uneven color, which doesn't affect mechanical function.  
 ⚠ For details of Salt-bath Nitriding, P.1907.



RoHS10

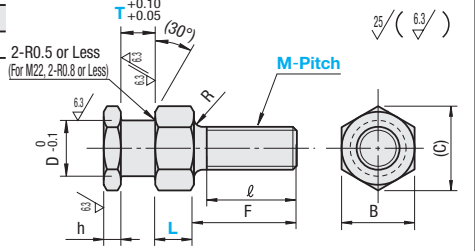
Part Number	Cylinder Connector										Holder										Unit Price		
	Type	M-Pitch	T	D	L	h	F	ℓ	B	C	R	D <sub>1</sub>	A	T <sub>1</sub>	h <sub>1</sub>	W	H	a	P	d		d <sub>1</sub>	H <sub>1</sub>
FJDHA	3-0.5	4	4	4	3	8	6	6	6.9	1	4.5	9	8	4	30	10	4	20	4.5	8	4.4	12	
	4-0.7	4	4	5	3	11	9	6	6.9	1	4.5	9	8	4	30	10	4	20	4.5	8	4.4	13	
	5-0.8	4	6	5	3	13	11	8	9.2	1	6.5	12	8	4	34	13	5	24	4.5	8	4.4	13	
	6-1.0	4	7	6	3	19	17	10	11.5	1.5	8	14	8	4	36	15	6	26	4.5	8	4.4	14	
	8-1.25	6	10	8	4	20	18	14	16.2	1.5	11	19	11	5	44	20	8	32	5.5	9.5	5.4	19	
	10-1.5	8	13	9	4	24	21	17	19.6	2	14	23	13	5	52	24	10	38	6.6	11	6.5	22	

Ordering Example **Part Number**  
 FJDHA5-0.8



Type	Material	Surface Treatment	Hardness
FJD	S45C Equivalent	Salt-bath Nitriding	500HV~

⚠ For FJD5W, see eCatalog.



⚠ Salt-bath Nitriding may cause uneven color, which doesn't affect mechanical function.  
 ⚠ For details of Salt-bath Nitriding, P.1907.

RoHS10

Part Number	Type	M-Pitch	T	L	h	D	F	ℓ	B	(C)	R	Unit Price	Applicable Holder			
													HLRA P.1533	HLRB P.1535	HLRC P.1534	HLRE P.1536
FJD	3-0.5	4	4			4	8	6	6	6.9	1		HLRA4	HLRB4	HLRC4	-
	4-0.7	4				6	11	9	8	9.2	1		HLRA4	HLRB4	HLRC4	-
	5-0.8	4	5	3		6	13	11	8	9.2	1		HLRA6	HLRB6	HLRC6	-
	6-1.0	4	6			7	19	17	10	11.5	1.5		HLRA7	HLRB7	HLRC7	HLRE7
	8-1.25	6	8			10	20	18	14	16.2	1.5		HLRA10	HLRB10	HLRC10	HLRE10
	10-1.5	8	9	4		13	24	21	17	19.6	2		HLRA13	HLRB13	HLRC13	HLRE13
	16-2.0	12	12			21	40	37	26	30	2		HLRA21	HLRB21	HLRC21	HLRE21
	20-2.5	15	15	5		25	50	46	30	34.6	2.5		HLRA25	HLRB25	HLRC25	HLRE25
22-2.5	20	17	6	27	60	56	32	36.9	2.5			HLRA27	-	HLRC27	-	

Part Number	Type	M-Pitch	T Selection							L	h	D	F	ℓ	B	(C)	R	Unit Price
			3	4	5	6	8	9	10									
FJD	3-0.5	3							4		4	8	6	6	6.9	1		
	4-0.7	3	5	6	8				5	3	6	13	11	8	9.2	1		
	5-0.8	3	5	6	8	9	10		6		7	19	17	10	11.5	1.5		
	6-1.0	5	6	8					8		10	20	18	14	16.2	1.5		
	8-1.25	5	8						9	4	13	24	21	17	19.6	2		
	10-1.5		6	9	10	12			12		21	40	37	26	30	2		
	16-2.0								15	5	25	50	46	30	34.6	2.5		
	20-2.5								17	6	27	60	56	32	36.9	2.5		

⚠ For compatible holders, see HLRAF (P.1533).

Ordering Example **Part Number** - T  
 FJD5-0.8 - 5