

Air Filters / Regulators for Air / Drain Traps

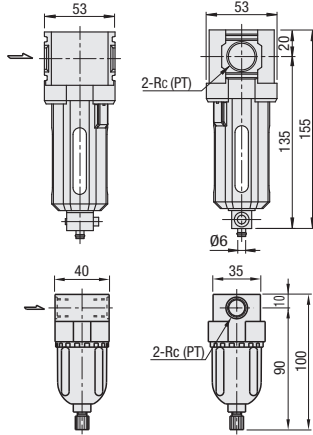
Air Filters



RoHS 10

MSAF (Air Filters)

8A, 10A



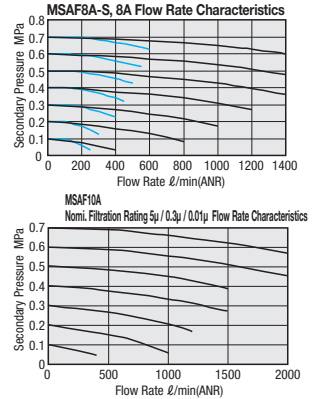
JIS Symbol



For the structural drawing, please refer to Regulators with Air Filters on the left page.

Characteristic Data

This graph shows that when the primary pressure is constant, the secondary set pressure drops according to the flow rate used.



Part Number Type	No.	Nomi. Filtration Rating (µm)	Rc(PT)	Operating Pressure MPa	Pressure Resistance MPa	Ambient Temperature Range (°C)	Applicable Fluid	Mass (g)	Unit Price
MSAF	8A-S	40	1/4	1.5	5-60	Air	140		
		0.01					250		
		0.3					270		
	10A	0.01	250						
		0.3	270						
		5	270						

Regulators for Air

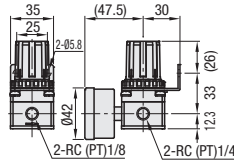


RoHS 10

MSR (Regulators for Air)

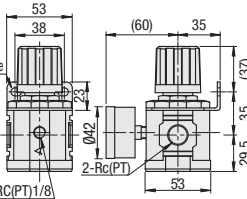
Accessory: Pressure Gauge 1 pc., Bracket 1 pc.

8A-S



8A, 10A

2-6.5x8 Slotted Hole



JIS Symbol



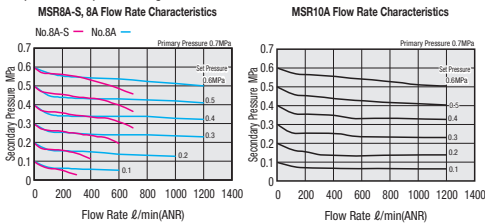
Regulator side view with Pressure Gauge (Accessory)

For the structural drawing, please refer to Regulators with Air Filters on the left page.

Part Number Type	No.	Rc(PT)	Operating Pressure MPa	Pressure Setting Range MPa	Pressure Resistance MPa	Ambient Temperature Range (°C)	Applicable Fluid	Mass (g)	Unit Price
MSR	8A-S	1/4	0.05-1.0	0.05-0.85	1.5	5-60	Air	250	
	8A							420	
	10A	3/8							

Characteristic Data

This graph shows that when the primary pressure is constant at 0.7 MPa, the secondary set pressure drops according to the flow rate used.



Ordering Example

Part Number - Nomi. Filtration Rating
MSAF8A-S - 40
MSR8A

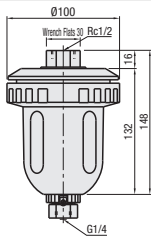
Drain Traps



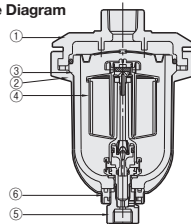
RoHS 10

MDTNH

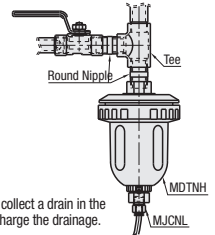
JIS Symbol



Structure Diagram



Example



Drain Traps collect a drain in the air and discharge the drain.

Part Number Type	No.	Unit Price
MDTNH	15A	

Do not use this product to drain fluid with dirt, oil at the bottom of the air tank, etc.



Part Number
MDTNH15A

Component List

No.	Name	Material
①	Cover	ZDC2
②	Clamp Ring	ZDC2
③	Case	PC
④	Float Assembly	-
⑤	Joint	POM
⑥	Coupling	POM

Features

- These are Float Drain Traps and no air is allowed to escape.
- The use of a magnet ensures effective drainage.



Specifications

Pneumatic Fitting	Rc1/2
Drain Outlet	G1/4
Applicable Fluid	Air, Drain
Operating Pressure	0.14-1.0MPa
Pressure Resistance	1.5MPa
Ambient Temperature	5 - 60°C
Discharge of Drainage	10cc/1 drain
Product Mass	0.7kg

Drain outlet will open when operating pressure becomes 0.05MPa or less.

Air may leak if float becomes stuck due to foreign objects, etc. In such a case, clean the float. Do not use this product especially at the bottom of the air tank where drain with dirt is collected.