

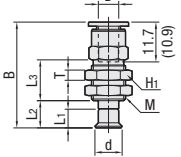
Suction Cup Fittings (With Pads)

Standard / Deep Type

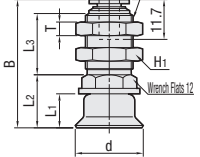
Fixed Type Up: One-Touch (Shape K)

Type	Accessory	Pad Shape	Pad Material
MVPKN	VPNT	Standard	Nitrile Rubber
MVPKE	VPUJ	Standard	Conductive Silicon Rubber
MVPKF	VPUF	Standard	Fluoro Rubber
MVFKN	VPFT	Deep	Nitrile Rubber
MVFKF	VPFF	Deep	Fluoro Rubber

Standard and Deep Type No.2-8



Standard and Deep Type No.10-40



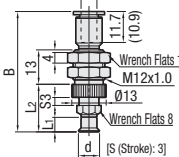
Dimensions in () are for Ø2 - 4.
 Fitting Material: Brass Surface Treatment: Electroless Nickel Plating

RoHS10

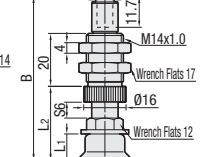
Spring Type Up: One-Touch (Shape T)

Type	Accessory	Pad Shape	Pad Material
MVPTN	VPNT	Standard	Nitrile Rubber
MVPTJ	VPUJ	Standard	Conductive Silicon Rubber
MVPTF	VPUF	Standard	Fluoro Rubber
MVFTN	VPFT	Deep	Nitrile Rubber
MVFTF	VPFF	Deep	Fluoro Rubber

Standard and Deep Type No.2-8



Standard and Deep Type No.10-40



Dimensions in () are for Ø2 - 4.
 Fitting Material: Brass Surface Treatment: Electroless Nickel Plating

RoHS10

Part Number		Shape K										Unit Price			
Type	Pad Material	No.	D	d	L1	B	L2	L3	Wrench Flats H	T	M	Mass g	1 - 50 pcs(s)		
MVPK (Standard)	N E F	2	4	2	4	28.3	6	10	8	2	M6x0.75	6	MVPKN	MVPKE	MVPKF
		3	4	3	4	28.3	6	10	8	2	M6x0.75	6			
		4	4	4	4	28.3	6	10	8	2	M6x0.75	6			
		6	6	7	32.9	9.5	12	12	3	M10x1.0	12.5				
		8	6	8	5.5	31.1	8	12	3	M10x1.0	12.5				
		10	6	10	8	34.1	12	18.5	14	4	M12x1.0	21			
		15	6	15	9	35.1	13	18.5	14	4	M12x1.0	21.5			
		20	6	20	10	37.7	15.6	18	17	4	M14x1.0	36.5			

Part Number		Shape K										Unit Price		
Type	Pad Material	No.	D	d	L1	B	L2	L3	Wrench Flats H	T	M	Mass g	1 - 30 pcs(s)	
MVFK (Deep)	N F	20	6	20	11	38.7	16.6	18	17	4	M14x1.0	36.5	MVFKN	MVFKF
		25	6	25	12	39.7	17.6	18	17	4	M14x1.0	37		
		30	6	30	14	41.7	19.6	18	17	4	M14x1.0	39		
		40	6	40	17.5	45.2	23.1	18	17	4	M14x1.0	47		

For orders larger than indicated quantity, please check with WOS.

Part Number		Shape T										Unit Price			
Type	Pad Material	No.	D	d	L1	B	L2	L3	Wrench Flats H	Spring Max. Load (N)	Mass g	1 - 50 pcs(s)			
MVPT (Standard)	N E F	2	4	2	4	43.2	17.5	17			0.9-1.9		MVPTN	MVPTJ	MVPTF
		3	4	3	4	43.2	17.5	17							
		4	4	4	4	43.2	17.5	17							
		6	6	7	43.2	19.5	18.5								
		8	6	8	5.5	45.6	18	18.5			4.0-7.1				
		10	6	10	8	60.1	25	35.5							
		15	6	15	9	61.1	27	36							
		20	6	20	10	62.1	28	39.5				7.0-12.6			

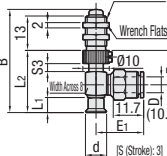
Part Number		Shape T										Unit Price		
Type	Pad Material	No.	D	d	L1	B	L2	L3	Wrench Flats H	Spring Max. Load (N)	Mass g	1 - 30 pcs(s)		
MVFT (Deep)	N F	20	6	20	11	63.1	23	39.5			7.0-12.6		MVFTN	MVFTF
		25	6	25	12	64.1	30	40						
		30	6	30	14	66.1	32	42.5						
		40	6	40	17.5	69.6	35.5	50.5						

For orders larger than indicated quantity, please check with WOS.

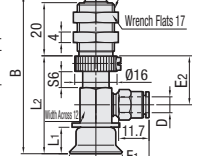
Spring Type Side: One-Touch (Shape L)

Type	Accessory	Pad Shape	Pad Material
MVPLN	VPNT	Standard	Nitrile Rubber
MVPLE	VPUJ	Standard	Conductive Silicon Rubber
MVPLF	VPUF	Standard	Fluoro Rubber
MVFLN	VPFT	Deep	Nitrile Rubber
MVFLF	VPFF	Deep	Fluoro Rubber

Standard and Deep Type No.2-8



Standard and Deep Type No.10-40



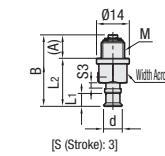
Dimensions in () are for Ø2 - 4.
 Fitting Material: Brass Surface Treatment: Electroless Nickel Plating

RoHS10

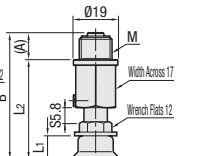
Direct-Mount Spring Type Screw (Shape S)

Type	Accessory	Pad Shape	Pad Material
MVPSN	VPNT	Standard	Nitrile Rubber
MVPSJ	VPUJ	Standard	Conductive Silicon Rubber
MVPSF	VPUF	Standard	Fluoro Rubber
MVFSN	VPFT	Deep	Nitrile Rubber
MVFSF	VPFF	Deep	Fluoro Rubber

Standard and Deep Type No.2-8



Standard and Deep Type No.10-40



Dimensions in () are for Ø2 - 4.
 Fitting Material: Brass Surface Treatment: Electroless Nickel Plating

RoHS10

Part Number		Shape L										Unit Price				
Type	Pad Material	No.	D	d	L1	B	L2	E1	E2	Mass g	Spring Max. Load (N)	1 - 50 pcs(s)				
MVPL (Standard)	N E F	2	4	2	4	40	24	16.7	12.5	13.5		0.9-1.9		MVPLN	MVPLE	MVPLF
		3	4	3	4	40	24	16.7	12.5	13.5						
		4	4	4	4	40	24	16.7	12.5	13.5						
		6	6	6	7	41	25	18.1	13	15.5						
		8	6	8	5.5	39.5	23.5	18.1	13	15.5		4.0-7.1				
		10	6	10	8	58.1	35	20.1	18.5	47.5						
		15	6	15	9	59.1	36	20.1	18.5	48						
		20	6	20	10	60.1	37	20.1	18.5	51.5			7.0-12.6			

Part Number		Shape L										Unit Price			
Type	Pad Material	No.	D	d	L1	B	L2	E1	E2	Mass g	Spring Max. Load (N)	1 - 30 pcs(s)			
MVFL (Deep)	N F	20	6	20	11	61.1	38	20.1	18.5	51.5		7.0-12.6		MVFLN	MVFLF
		25	6	25	12	62.1	39	20.1	18.5	52					
		30	6	30	14	64.1	41	20.1	18.5	54					
		40	6	40	17.5	67.6	44.5	20.1	18.5	62					

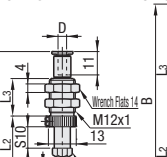
Part Number		Shape S										Unit Price			
Type	Pad Material	No.	D	d	L1	M	(A)	B	L2	Mass g	Spring Max. Load (N)	1 - 20 pcs(s)			
MVPS (Standard)	N E F	2	2	4	M10x1	9.5	32	22.5	14.5		2.3-3.9		MVPSN	MVPSJ	MVPSF
		3	3	4	M10x1	9.5	32	22.5	14.5						
		4	4	4	M10x1	9.5	32	22.5	14.5						
		6	6	7	M10x1	9.5	32	22.5	14.5						
		8	8	5.5	M10x1	9.5	30.5	21.0	14.5		7.9-15.0				
		10	10	8	M14x1	11.7	51	39.3	55.5						
		15	15	9	M14x1	11.7	52	40.3	56						
		20	20	10	M14x1	11.7	54	42.3	58.5						

Part Number		Shape S										Unit Price		
Type	Pad Material	No.	D	d	L1	M	(A)	B	L2	Mass g	Spring Max. Load (N)	1 - 30 pcs(s)		
MVFS (Deep)	N F	20	20	11	M14x1	11.7	55	43.3	58.5		7.9-15.0		MVFSN	MVFSF
		25	25	12	M14x1	11.7	56	44.3	59					
		30	30	14	M14x1	11.7	58	46.3	61					
		40	40	17.5	M14x1	11.7	61.5	49.8	69					

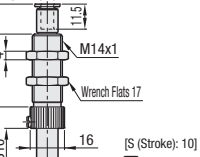
Spring Type Long Stroke (Shape R)

Type	Accessory	Pad Shape	Pad Material
MVPRN	VPNT	Standard	Nitrile Rubber
MVPRE	VPUJ	Standard	Conductive Silicon Rubber
MVPRF	VPUF	Standard	Fluoro Rubber
MVFRN	VPFT	Deep	Nitrile Rubber
MVFRF	VPFF	Deep	Fluoro Rubber

Standard and Deep Type No.4-8



Standard and Deep Type No.10-40



Dimensions in () are for Ø2 - 4.
 Fitting Material: Brass Surface Treatment: Electroless Nickel Plating

RoHS10

Part Number		Shape R										Unit Price			
Type	Pad Material	No.	D	d	L1	B	L2	L3	Mass g	Spring Max. Load (N)	1 - 20 pcs(s)				
MVPR (Standard)	N E F	4	4	4	4	57.2	27	17.5	20.5		0.6-1.7		MVPRN	MVPRE	MVPRF
		6	4	6	7	56.7	26.5	17.5	20						
		8	4	8	5.5	55.2	25	17.5	20						
		10	6	10	8	64.6	30.5	20	36.5						
		15	6	15	9	65.6	31.5	20	37						
		20	6	20	10	68.1	34	20	42						

Part Number		Shape R										Unit Price		
Type	Pad Material	No.	D	d	L1	B	L2	L3	Mass g	Spring Max. Load (N)	1 - 30 pcs(s)			
MVFR (Deep)	N F	20	6	20	10	69.1	35	20	42		2.0-5.2		MVFRN	MVFRF
		25	6	25	11	70.1	36	20	42.5					
		30	6	30	12	72.1	38	20	44.5					
		40	6	40	14	75.6	41.5	20	53					

For orders larger than indicated quantity, please check with WOS.

Cautions for installation of Suction Cup Fittings

For Spring Type, mount Fittings without tightening the Shaft parts with spanner, etc. Otherwise, the Shaft key groove may be deformed, and may cause malfunction.