

Fittings for Vacuum Plumbing

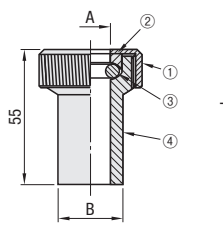
Gage Port / Adapter Fitting

Gage Port - Single Unit / Welded

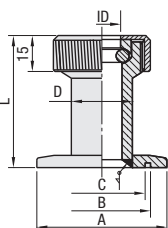


RoHS10

FRGP



FRNGP

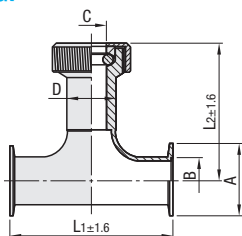


Nipples with Gauge Port



RoHS10

FRNWGP

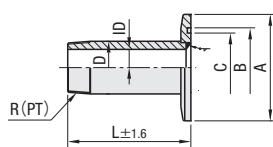


Male Adapter



RoHS10

FRNFA



Max. Operation Temperature: 200°C

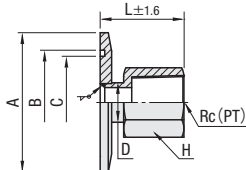
Material: SUS304

Female Adapter



RoHS10

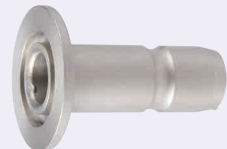
FRNFM



Max. Operation Temperature: 200°C

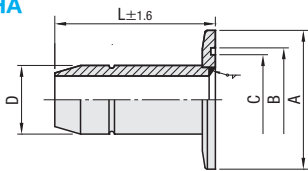
Material: SUS304

Hose Adapter



RoHS10

FRNHA



Max. Operation Temperature: 200°C

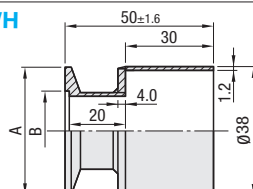
Material: SUS304

Duct Adapter



RoHS10

FRNWH



Max. Operation Temperature: 200°C

Material: SUS304

Gage Ports only

Part Number Type	Connection Diameter	A	B	Unit Price Qty. 1 ~ 4
FRGP	15	16	25	
	18	19	28	

For orders larger than indicated quantity, please check with WOS.

Welded

Part Number Type	No.	Flange A	Flange B	Connection Diameter	Gage Ports ID	Gage Ports D	L	Unit Price Qty. 1 ~ 4
FRNGP	25-15	40	26.2	15	16	25	75	
	25-18			18	19	28		
	40-15	55	41.2	15	16	25	57	
	40-18			18	19	28		

For orders larger than indicated quantity, please check with WOS.

Part Number Type	No.	A	B	Connection Diameter	C	D	L1	L2	Unit Price Qty. 1 ~ 4
FRNWGP	25-15	40	26.2	15	16	25	97.2	83.6	
	25-18			18	19	28			
	40-15	55	41.2	15	16	25	135.2	102.6	
	40-18			18	19	28			

For orders larger than indicated quantity, please check with WOS.

Gage Port Specifications

No.	Product Name	Material
①	Swaging Sleeve Nut	SUS304
②	Collar	SUS304
③	O-Ring	NBR
④	Sleeve	SUS304
-	Flange	SUS304
-	Nipple	SUS304

Part Number Type	No.	Nominal	R (PT)	A	D	ID	L	Unit Price Qty. 1 ~ 10
FRNFA	16	1	1/8	30	10.5	7.5	50	
		1	1/8	40	10.5			
	25	2	1/4	40	13.8	9.8		
		3	3/8	40	17.3	13.3		
		2	1/4	55	13.8	9.8		
		3	3/8	55	17.3	13.3		
40	4	1/2	55	21.7	15.7			
	6	3/4	55	27.2	21.2			

For orders larger than indicated quantity, please check with WOS.

Part Number Type	No.	Nominal	Rc (PT)	A	B	L	H	D	Unit Price Qty. 1 ~ 10
FRNFM	16	2	1/4	30	17.2	26	17	13	
		2	1/4	40	26.2	27	17	13	
	25	3	3/8	40	26.2	27	21	16	
		2	1/4	55	41.2	27	17	13	
		3	3/8	55	41.2	28	21	16	
		4	1/2	55	41.2	34	26	20	

For orders larger than indicated quantity, please check with WOS.

Part Number Type	No.	Applicable Hose I.D.	A	B	D	L	Unit Price Qty. 1 ~ 10
FRNHA	16	19	30	17.2	19	60	
	25	22	40	26.2	24	80	
	40	38	55	41.2	38	80	

For orders larger than indicated quantity, please check with WOS.

Part Number Type	No.	Applicable Duct Nominal Dia.	A	B	Unit Price Qty. 1 ~ 4
FRNWH	16	38	30	17.2	
	25	38	40	26.2	

For orders larger than indicated quantity, please check with WOS.

Features Connecting duct hoses to the exhaust port of vacuum pump prevents emission from being exhausted into air. Suitable for use in clean room.

Applicable Duct Hose

Product Name	Type	Nominal	Page
Lightweight	HOSSE□	38	P1324
Flexible	HOSSD□		P1324
Friction Resistant, Antistatic	HOSH□		P1324
Non-PVC	HOSCD□		P1325
Non-PVC	HOSCE□		P1325
Aluminum	HOAD		P1326



Ordering Example

Part Number
FRNWGP25-18 - Nominal
FRNFM25 - 3