

MISUMI C-VALUE Ball Valves

Points of comparison between similar products

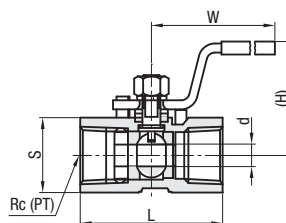
① GB, ASME Standard Equivalent, ② Not RoHS Compliant

For similar parts P.1331

Reduced Bore Type



Type	Handle Shape	Material		Max. Operating Pressure
		Main Body	Ball Seat	
C-BSFFA	Lever Type	Stainless Steel	Fluororesin	Water, Oil, Air, Gas: 4.12MPa

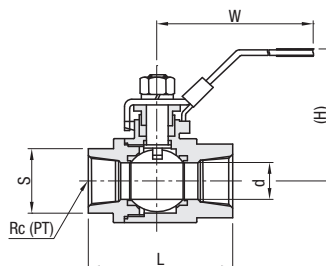


Part Number		Rc (PT)	d	S	L	(H)	W	Unit Price	Volume Discount Rate
Type	No.							1 ~ 4 pc(s).	5 ~ 10 pcs.
C-BSFFA	8A	1/4	4.6	16.5	39	30	63		
	10A	3/8	7	20.5	43	38	84		
	15A	1/2	9	24.5	51.5	38	89		
	20A	3/4	12.5	30	56.5	41	89		
	25A	1	15	37.5	66.5	53	109		

Full Bore Type (High Flow Rate)



Type	Handle Shape	Material		Max. Operating Pressure
		Main Body	Ball Seat	
C-BSCSF	Lever Type	Stainless Steel	Fluororesin	Water, Oil, Air, Gas: 4.12MPa



Part Number		Rc (PT)	d	S	L	(H)	W	Unit Price	Volume Discount Rate
Type	No.							1 ~ 4 pc(s).	5 ~ 10 pcs.
C-BSCSF	15A	1/2	15	25	59.5	55	100		
	20A	3/4	20	31	65.5	65	108		
	25A	1	25	38	76.5	70	119		
	40A	1 1/2	38	53	101	87	150		



Ordering Example

Part Number
C-BSFFA20A