

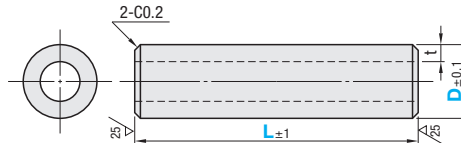
Steel Pipes for Hydraulics / Swaged Sleeve Fittings for Hydraulics

Steel Pipes for Hydraulics

OST



RoHS 10



√(25/)

Material: OST-2 (STPS-2 (JIS B2351))

Part Number Type	D	L 1mm Increment	t	Unit Price 1 ~ 4 pc(s).				
				L20-250	L251-500	L501-750	L751-1000	L1001-1500
OST	6	20~1500	1.0					
	8		1.0					
	10		1.2					
	12		1.5					



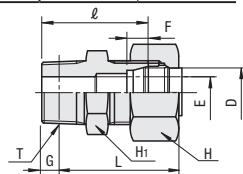
Ordering Example
Part Number - L
OST8 - 250

Swaged Sleeve Fittings for Hydraulics Connectors



RoHS 10

Type	Material	Surface Treatment
KTGS	Main Body, Nut: S25C Sleeve: Carbon Steel	Iridivalent Chromate -



Part Number Type	No.	Applicable Pipe O.D. D	T R(PT)	E	Reference Dia. G	Tightening by Hand Approx. L	Hex Socket H1 H	F	ℓ	Unit Price 1 - 9 pc(s).	Volume Discount Rate 10 - 30 pcs.
KTGS	6-1	6	1/8	4	3.97	34.5	14 14	7	28		
	6-2	6	1/4	4	6.01	37.5	17 14	7	33		
	8-1	8	1/8	4	3.97	35.5	17 17	7	29		
	8-2	8	1/4	6	6.01	37.5	17 17	7	33		
	10-2	10	1/4	7	6.01	38.5	17 19	7	33		
	10-3	10	3/8	8	6.35	39.0	19 19	7	34		
	12-2	12	1/4	7	6.01	38.5	19 22	7	33		
	6A-2	10.5	1/4	7	6.01	34.5	17 19	7	33		
	8A-3	13.8	3/8	9	6.35	40	22 24	7.5	37		
	10A-4	17.3	1/2	12	8.16	44.5	27 32	8	41		
	15A-6	21.7	3/4	16	9.53	48	32 36	9	45		

Use No.6A, 8A, 10A, 15A with the same No. of SUT, STPG (P1265). Sleeves of No.6A, 8A, 10A, 15A is different from those for KTGS (P1302). No. 8, 10 and 12 have approx. 1.4mm protrusion for improving pressure resistance.

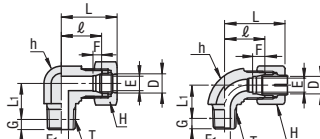
Swaged Sleeve Fittings for Hydraulics Elbow Nipples



RoHS 10

Type	Material	Surface Treatment
KTGE	Main Body, Nut: S25C Sleeve: Carbon Steel	Iridivalent Chromate -

No.6-1, 8-1, 8A-3, 10A-4, 15A-6 Others



Part Number Type	No.	Applicable Pipe O.D. D	T R(PT)	E	E1	Reference Dia. G	Tightening by Hand Approx. L	L1	Wrench Flats h	Hex Socket H	F	ℓ	Unit Price 1 - 9 pc(s).	Volume Discount Rate 10 - 30 pcs.
KTGE	6-1	6	1/8	4	4	3.97	30.5	14	14	14	7	20		
	6-2	6	1/4	4	4.5	6.01	33.5	17	17	14	7	23		
	8-1	8	1/8	6	4	3.97	33.5	16	17	17	7	23		
	8-2	8	1/4	6	7	6.01	33.5	18	17	17	7	23		
	10-2	10	1/4	8	7	6.01	34.5	19	17	19	7	23		
	10-3	10	3/8	8	9	6.35	35.5	19.5	19	19	7	24		
	12-2	12	1/4	10	7	6.01	35.5	20.5	19	22	7	24		
	8A-3	13.8	3/8	11	9	6.35	40	22.5	22	24	7.5	28		
	10A-4	17.3	1/2	14	12	8.16	44.5	30	27	32	8	32		
	15A-6	21.7	3/4	18	16	9.53	46.5	32.5	32	36	9	34		

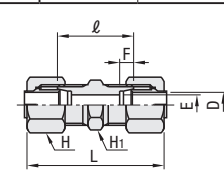
Use No.8A, 10A, 15A with the same No. of SUT, STPG (P1265). Sleeves of No.8A, 10A, 15A is different from those for KTGS (P1302). No. 8 has approx. 1.4mm protrusion for improving pressure resistance.

Swaged Sleeve Fittings for Hydraulics Union



RoHS 10

Type	Material	Surface Treatment
KTGR	Main Body, Nut: S25C Sleeve: Carbon Steel	Iridivalent Chromate -



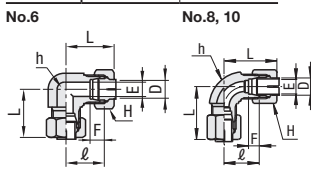
Part Number Type	No.	Applicable Pipe O.D. D	E	Hex Socket		F	ℓ	Tightening by Hand Approx. L	Unit Price 1 - 9 pc(s).	Volume Discount Rate 10 - 30 pcs.
				H1	H					
KTGR	6	6	4	14	14	7	30	51		
	8	8	6	17	17	7	31	52		
	10	10	8	17	19	7	31	54		
	12	12	10	19	22	7	31	54		

Swaged Sleeve Fittings for Hydraulics Elbow



RoHS 10

Type	Material	Surface Treatment
KTGLB	Main Body, Nut: S25C Sleeve: Carbon Steel	Iridivalent Chromate -



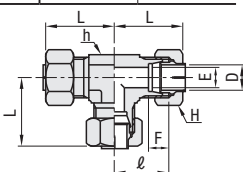
Part Number Type	No.	Applicable Pipe O.D. D	E	Wrench Flats h	Hex Socket H	F	ℓ	Tightening by Hand Approx. L	Unit Price 1 - 9 pc(s).	Volume Discount Rate 10 - 30 pcs.
KTGLB	6	6	4	14	14	7	20	30.5		
	8	8	6	17	17	7	23	33.5		
	10	10	8	17	19	7	23	34.5		

Swaged Sleeve Fittings for Hydraulics Tee



RoHS 10

Type	Material	Surface Treatment
KTGTE	Main Body, Nut: S25C Sleeve: Carbon Steel	Iridivalent Chromate -



Part Number Type	No.	Applicable Pipe O.D. D	E	Wrench Flats h	Hex Socket H	F	ℓ	Tightening by Hand Approx. L	Unit Price 1 - 9 pc(s).	Volume Discount Rate 10 - 30 pcs.
KTGTE	6	6	4	14	14	7	20	30.5		
	8	8	6	17	17	7	23	33.5		
	10	10	8	17	19	7	23	34.5		
	12	12	10	19	22	7	24	35.5		