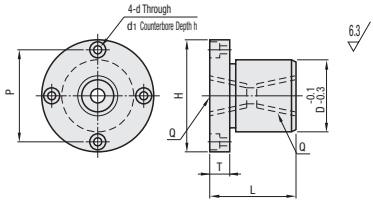


Plumbing Terminals

Flanged

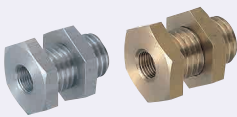


Type	Material	Surface Treatment	Accessory	Max. Operating Pressure
BTLF	S45C	Trivalent Chromate	Hex Socket Head Cap Screw (Stainless Steel)	20.6MPa
BTLFA	A5052	-	4 pcs.	1MPa
BTLFC	Free-Cutting Brass	-		6.9MPa
BTLFS	SUS304	-		20.6MPa

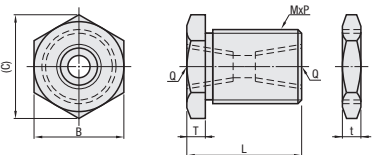


Part Number	Rc (PT)		H	D	T	L	P	d	d ₁	h	Included Screw (4 pcs.)	Unit Price			
	Type	No.										Q	BTLF	BTLFA	BTLFC
BTLF BTLFA BTLFC BTLFS	1	1/8	35	15	7	20	25	4.5	8	4.4	SCB4-10				
	2	1/4	50	25	8	30	38	5.5	9.5	5.4	SCB5-10				
	3	3/8													
	4	1/2	65	35	10	45	50	6.6	11	6.5	SCB6-12				

Hex



Type	Material	Surface Treatment	Accessory	Max. Operating Pressure
BTLH	S45C	Trivalent Chromate	Hex Nut 1 pc.	20.6MPa
BTLHA	A5052	-		1MPa
BTLHC	Free-Cutting Brass	-		6.9MPa
BTLHS	SUS304	-		20.6MPa



* Mx. pressure of No. 5 / 5-S is less than 1MPa.

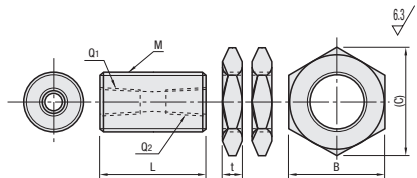
Part Number	Rc (PT)		B	(C)	MxP	L	T	Included Nut t	Unit Price			
	Type	No.							Q	BTLH	BTLHA	BTLHC
Standard BTLH BTLHA BTLHC BTLHS	1	1/8	24	26.8	16x2.0	30	5	8				
	2	1/4	46	50.9	30x3.5	45	8	15				
	3	3/8	46	50.9	30x3.5	45	8	15				
	4	1/2	55	60.8	36x4	60	10	18				
	5	M5	24	26.8	16x2.0	30	5	8				

Part Number	Rc (PT)		B	(C)	MxP	L	T	Included Nut t	Unit Price		
	Type	No.							Q	BTLH	BTLHC
L Short BTLH BTLHC BTLHS	1-S	1/8	22	25.4	16x1.5	16	5	7			
	2-S	1/4	27	31.2	20x1.5	22	5	7			
	3-S	3/8	32	36.9	24x1.5	26	8	10			
	4-S	1/2	36	41.6	30x1.5	31	8	10			
	5-S	M5	19	21.9	12x1.5	15	5	7			

Fully Thread



Type	Material	Surface Treatment	Accessory	Max. Operating Pressure
BTLR	S45C	Trivalent Chromate	Hex Nut 2 pcs.	20.6MPa
BTLRA	A5052	-		1MPa
BTLRC	Free-Cutting Brass	-		6.9MPa
BTLRS	SUS304	-		20.6MPa



NPT Tips have steps for identification on NPT side.

Part Number	No.	Rc (PT)		M (Coarse)	L	Included Nut			Unit Price			
		Q ₁	Q ₂			t	B	(C)	BTLR	BTLRA	BTLRC	BTLRS
BTLR BTLRA BTLRC BTLRS	1	1/8		16	30	8	24	26.8				
	1-N	1/8	NPT1/8									
	2	1/4		30	45	15	46	50.9				
	3	3/8										
4	1/2		36	60	18	55	60.8					



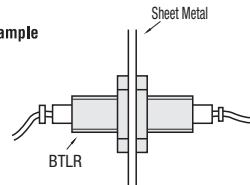
Ordering Example

Part Number

BTLF3
BTLH1-S



Example



Can be positioned freely because it has no shoulder.