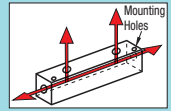


Manifold Blocks - Hydraulic

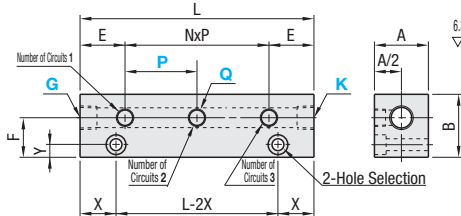
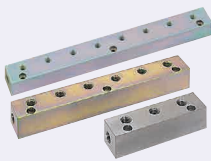
Lateral Through Hole, Upper Hole



For details of recommended tapered male thread tightening torque and through pilot holes, see P.1224.

By inserting "G-" before part number, "PT Threads (Tapered Female Threads)" can be changed to "PF Threads (Parallel Female Threads)" in compliance with "JIS B 0202" (Unit Price remains the same).

Pitch (P) Standard				Pitch (P) Configurable			Material	Surface Treatment	Max. Operating Pressure
25x32 Sq.	30x35 Sq.	50 Sq.	60 Sq.	25x32 Sq.	30x35 Sq.	50 Sq.			
BMBS	BMBF	BMBFL	BMBL	BMBSP	BMBFP	BMBFLP	SS400	Trivalent Chromate	20.6MPa=210kgf/cm ² or less
-	BMBFM	BMBFLM	-	-	BMBFMP	BMBFLMP	Steel for General Structure	Electroless Nickel Plating	
BMBSR	BMBFR	BMBFLR	-	BMBSRP	BMBFRP	BMBFLRP	SUS304	-	
-	BMBFS	-	-	-	BMBFSP	-	SUS316	-	
-	BMBFC	-	-	-	-	-	Brass	-	
									1MPa=10kgf/cm ² or less



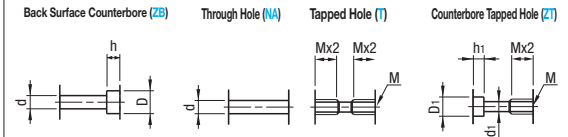
* Drawing for 3 Circuit Type is selected.
The total number of Q, G and K threads is 5.

- ⊗ X dimension for 30x35 Sq. 1 Circuit Type is 15.
- ⊗ Mounting hole shape can be selected freely.
- ⊗ Standard hole shape is selected when no hole shape modification is specified.

<L Dimension Calculation>
Ex.: For BMBFP3~ ~P35
L=NxP+2E= (Number of Circuits 3-1) x 35 + 2 x 25 = 120



Mounting Hole Change



Part Number	Type	Mounting Hole Change	Rc (PT), NPT Selection	Pitch P		Number of Pitches	Total Number of Q, G and K Threads	A	B	E	F	X	Y	Mounting Hole	
				Q	G, K										Standard
(25x32 Sq.)	Pitch Standard BMBS	Pitch Configurable BMBSP	Q	G, K	30	20-50	0	3	25	32	20	20	15	6	M5
							1	4							
							2	5							
							3	6							
							4	7							
							5	8							
							6	9							
							7	10							
(30x35 Sq.)	Pitch Standard BMBF	Pitch Configurable BMBFP	Q	G, K	40	25-50	0	3	30	35	25	22	20	7	M6
							1	4							
							2	5							
							3	6							
							4	7							
							5	8							
							6	9							
							7	10							
(50 Sq.)	Pitch Standard BMBFL	Pitch Configurable BMBFLP	Q	G, K	60	35-60	0	3	50	50	30	28	20	8	M8
							1	4							
							2	5							
							3	6							
							4	7							
							5	8							
							6	9							
							7	10							
(60 Sq.)	Pitch Standard BMBL	Pitch Configurable BMBLP	Q	G, K	60	-	0	3	60	60	40	35	25	9	M8
							1	4							
							2	5							
							3	6							

⊗ By inserting "G-" before part number, the thread type can be changed to the G (PF) Thread as part of ordering. (Ex.: G-BMBF) For ordering, see the Ordering Example.

⊗ For Q, G and K, specify 1, 2, 3, 4, 6, 8, 1N, 2N, 3N or 4N indicated before ().

⊗ Specify the pitch taking into consideration the necessary dimensions for fitting the couplings.

⊗ Single Circuit is not available for Pitch Configurable Type.

⊗ SUS316 or Brass is for up to 6 connections.

⊗ Each 6 and 8 Circuit Type has an additional mounting hole at the midpoint of the overall length. 7 Circuit Type has an additional mounting hole at each midpoint of the 2 - 3 port pitch, and 5 - 6 port pitch from the left to the right.



Part Number	Type	Mounting Hole Change	Number of Circuits	Q	G	K	P
BMBF			3	Q3	G4	K2	
BMBFLP	NA		3	Q3	G4	K6	P45
G-BMBFLP	NA		3	Q3	G4	K6	P45 (G Thread)

Number of Circuits	Pitch (P) Standard Unit Price								Pitch (P) Configurable Unit Price											
	25x32 Sq.	30x35 Sq.			50 Sq.	60 Sq.	25x32 Sq.	30x35 Sq.			50 Sq.									
1	BMBS	BMBSR	BMBF	BMBFM	BMBFR	BMBFS	BMBFC	BMBFL	BMBFLM	BMBFLR	BMBL	BMBSP	BMBSRP	BMBFP	BMBFMP	BMBFRP	BMBFSP	BMBFLP	BMBFLMP	BMBFLRP
2																				
3																				
4																				
5																				
6																				
7																				
8																				