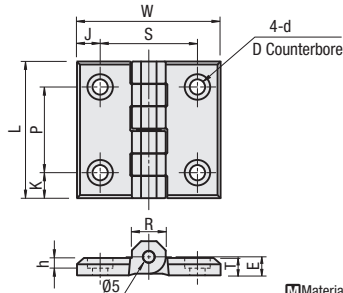


Plastic Hinges / Compact Plastic Hinges / Low Dust Generation Hinges



HHPSJ



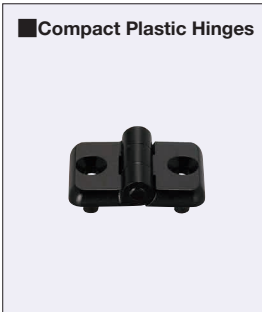
For HHPSJ8 and HHPSJ845, the hinge nuts on **P.1199** are recommended when mating to panels, etc.

Material: Hinge Plate: Nylon 6, Shaft: SUS304

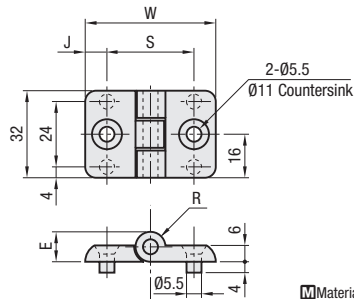
RoHS10

| Part Number Type | No. | Color | * Allowable Load | | Mass g | L | W | K | P | J | S | D | d | T | E | R | h | Unit Price | Volume Discount Rate |
|------------------|-----|-----------|------------------|-----|--------|----|----|------|----|------|----|-----|-----|-----|-----|------|-----|---------------|----------------------|
| | | | kg | N | | | | | | | | | | | | | | 1 ~ 9 pc (s). | 10~50 |
| HHPSJ | 6 | B (Black) | 10 | 96 | 21 | 48 | 47 | 9 | 30 | 8 | 32 | 9.5 | 5.5 | 6 | 6.5 | 12.6 | 3.8 | | |
| | 8 | W (White) | 35 | 59 | 62 | 11 | 37 | 10 | 42 | | | | | | | | | | |
| | 845 | | 15 | 147 | 44 | 70 | 80 | 13.5 | 43 | 16.5 | 47 | 11 | 6.6 | 7.5 | 8 | 14.5 | 4.4 | | |

* The allowable load is the value when 2 pieces are used. The default color is black unless specified.



HHPSJC



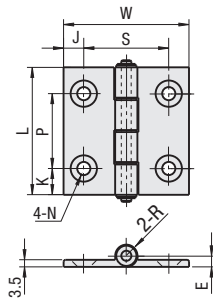
Material: Hinge Plate: Nylon 6, Shaft: SUS304

| Part Number Type | No. | * Allowable Load | | Mass (g) | W | J | S | E | R | Unit Price | Volume Discount Rate |
|------------------|-----|------------------|----|----------|----|-----|----|----|-----|---------------|----------------------|
| | | kg | N | | | | | | | 1 ~ 9 pc (s). | 10~100 |
| HHPSJC | 5 | 10 | 98 | 12.5 | 36 | 7.5 | 21 | 10 | 5 | | |
| | 6 | 10 | 98 | 15.8 | 48 | 8 | 32 | 11 | 5.5 | | |
| | 8 | 10 | 98 | 26.2 | 62 | 10 | 42 | 11 | 5.5 | | |

* The allowable load is the value when 2 pieces are used.

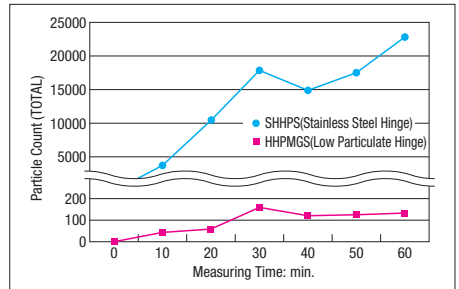


HHPMGS



Material: A6063S-T5
Bushing: Oil Soaked Polyacetal
Surface Treatment: Electroless Nickel Plating

RoHS10



Features

- Superior in friction resistance and sliding properties with low dust generation compared to the conventional hinges, since the sliding section is made from the special material (oil embedded Polyacetal).
- The aluminum part is electroless nickel plated instead of conventional clear anodizing. This provides an excellent electric conductivity, resulting in less dust collection.
- The hinge nuts on **P.1199** are recommended when mating to panels, etc.

| Part Number Type | No. | * Allowable Load | | Mass g | L | W | K | P | J | S | N | | E | R | Unit Price | Volume Discount Rate |
|------------------|-----|------------------|----|--------|----|----|-----|----|-----|----|---------|-------------|-----|-----|---------------|----------------------|
| | | kg | N | | | | | | | | Through | Countersink | | | 1 ~ 8 pc (s). | 9~50 |
| HHPMGS | 5 | 10 | 98 | 22 | 47 | 36 | 11 | 25 | 7.5 | 21 | 5.5 | 11 | 5 | 5 | | |
| | 6 | | | 33 | | 48 | 8.5 | 30 | 8 | 32 | 6.5 | 13 | 5.5 | 5.5 | | |
| | 8 | | | 48 | | 63 | 62 | 13 | 37 | 10 | 42 | | | | | |

* The allowable load is the value when 2 pieces are used.

