

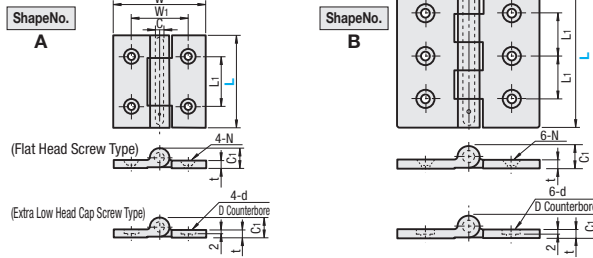
Hinges for Heavy Loads / Hinges with Slotted Holes / Aluminum Hinges with Slotted Holes

Hinges for Heavy Loads



RoHS10

Type		Material	Surface Treatment	
Flat Head Screw Type	Extra Low Head Cap Screw Type		Hinge Plate	Shaft
HHSZ	HHSZT	SUS316	Buffing	-
HHSZD	-	Zinc Die Cast	Chrome Plating	-



Part Number Type	Shape No.	L	W	W1	L1	C	C1	t	HHSZ, HHSZD		HHSZT		Division	* Allowable Load (N)	Weight (g)	HHSZ		HHSZD		HHSZT		
									N	Through/Countersink	D	d				Unit Price	Volume Discount Rate	Unit Price	Volume Discount Rate	Unit Price	Volume Discount Rate	
HHSZ HHSZD HHSZT	A	50	35	20	6	14	5	4.4	8.6	8.6	4.6	3	350	110								
		65	40	35	8	16	6	5.6	10.6	9.6	5.6	3	450	190								
	B	100	60	30	8	16	6	6.6	12.6	10.6	6.6	5	650	305								
		125	100	60	37.5	8	16	6	6.6	12.6	-	-	5	850	500							

* The allowable load is the value when 2 pieces are used.

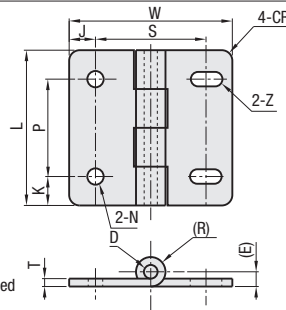
Hinges with Slotted Holes

SHPSNA



RoHS10

The hinge nuts on P.1199 are recommended when mating to panels, etc.



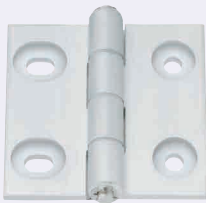
Material: SUS304

Part Number Type	No.	* Allowable Load (kg)	N	Mass (g)	L	W	K	P	J	S	N	Z	T	(E)	(R)	CR	D	Unit Price	Volume Discount Rate
SHPSNA	5	9	88	34	41	36	8	25	7.5	21	5.5	5.5x6.5	2	4.6	4.6	4	5		20-50
	6	12	117	48	48	48	9	30	8	32	6.5	5.5x10	3	6.1	6.1	5	6		
	8	25	245	111	59	62	11	37	10	42	6.5	6.5x10	3	6.1	6.1	5	6		

* The allowable load is the value when 2 pieces are used.

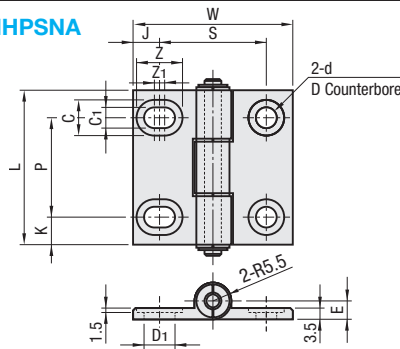
Aluminum Hinges with Slotted Holes

HHPSNA

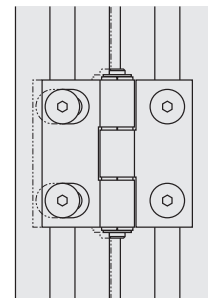


RoHS10

Material: A6063, Bushing: Polyacetal
Surface Treatment: Clear Anodize



Example The hinge nuts on P.1199 are recommended when mating to panels, etc.



Slotted mounting holes make it possible to adjust for right and left positions.

Part Number Type	No.	* Allowable Load (kg)	N	Mass (g)	L	W	K	P	J	S	d Through	D Counterbore	D1	C	C1	Z	Z1	E	Unit Price	Volume Discount Rate
HHPSNA	5	10	98	22	47	36	11	25	7.5	21	5.5	10	7	10	5.5	11.5	1.5	5		9-50
	6			32	48	8.5	30	8	32	6.5	11	9.5	11.5	11	6.5	14	3	5.5		
	8			47	63	13	37	10	42	6.5	11	11.5	11.5	11	6.5	16	5	5.5		

* The allowable load is the value when 2 pieces are used.

Ordering Example	Part Number
	HHSZ65
	SHPSNA5
	HHPSNA8