

Miniature Clamp Levers / Flat Clamp Levers

Miniature Clamp Levers



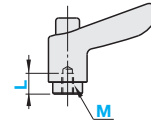
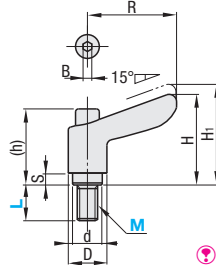
RoHS10

Type		Lever		Screw		Spring
Threaded	Tapped	M Material	S Surface Treatment	M Material	S Surface Treatment	M Material
CLDMC	CLDFC	Zinc Die Casting	Baked Paint	S45C	Black Oxide	SUS304-WPB
CLMSC	CLFSC			SUS303	-	
CLCMC	CLCFC					

Ⓢ Chrome over satin nickel is a non-gloss finish.

Threaded
CLDMC
CLMSC
CLCMC

Tapped
CLDFC
CLFSC
CLCFC



Ⓢ Hex Socket B is created during a production of Levers. It is not a socket used during an installation of Levers.

M	R	H	H ₁	(h)	S	D	d	Number of Serrated Teeth	B	Max. Load Fmax. (N)		Max. Tightening Force Pmax. (kN)		Reference Mass (g)	
										SUS303	S45C	SUS303	S45C	Threaded	Tapped
4	30	29	32.5	25.8	4	13	10	16	3	48	80	1.8	3.0	25	23
5										65	108	2.9	4.8	26	24
6										110	184	4.1	6.8	32	30
8	42	40	43.5	32.3	7	17.5	14	20	4	189	316	7.5	12.5	60	-

Part Number		L Selection		Lever Color			Unit Price			Part Number		L Selection		Lever Color			Unit Price		
Type	M				CLDMC, CLMSC	CLCMC	CLDMC	CLMSC	CLCMC	Type	M			CLDFC, CLFSC	CLCFC	CLDFC	CLFSC	CLCFC	
Threaded CLDMC CLMSC CLCMC	4	*8	12	16	20	25	B (Black) M (Orange) S (Silver Gray) *R (Red) *Y (Yellow)	C (Chrome Plating) SC (Satin Nickel Chrome Plating)		Tapped CLDFC CLFSC CLCFC	4	7	B (Black) M (Orange) S (Silver Gray) R (Red) Y (Yellow)	C (Chrome Plating) SC (Satin Nickel Chrome Plating)					
	5	*8	12	16	20	25					32								
	6	*8	12	16	20	25					32								
	*8	16	20	25	32														

Ⓢ * Red and yellow are not available for M8 and L8 size levers. Ⓢ * M8 is not applicable to CLCMC

■ Features: Suitable for use without interfering when upper space is narrow.

Flat Clamp Levers

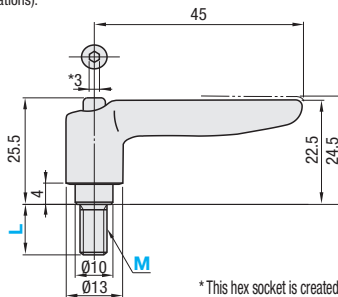


RoHS10

Type		Lever		Screw		Spring
Threaded	Tapped	M Material	S Surface Treatment	M Material	S Surface Treatment	M Material
CLDMT	CLMST	Zinc Die Casting	Electrostatic Paint	S45C	Black Oxide	SUS304-WPB
				SUS303	-	

Ⓢ 16 teeth (serrations).

Threaded
CLDMT
CLMST



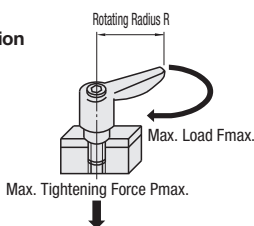
* This hex socket is created during a production of Levers. It is not a socket used during an installation of Levers.

Part Number		L Selection		Lever Color			Max. Load Fmax. (N)		Max. Tightening Force Pmax. (kN)		Reference Mass (g)	Unit Price		
Type	M				B (Black)	M (Orange)	S (Silver Grey)	SUS303	S45C	SUS303	S45C	CLDMT	CLMST	
CLDMT CLMST	4	12	16	20	25		48	80	1.8	3	33			
	5	12	16	20	25		32	65	108	2.9	4.8	34		
	6	12	16	20	25		32	110	184	4.1	6.8	40		

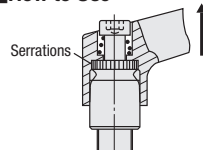
Ordering Example: Part Number - L - Lever Color
CLDMC4 - 12 - M
CLDMT4 - 16 - M



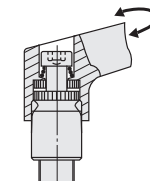
Load Direction



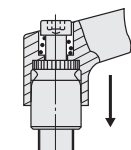
How to Use



① Pull up the lever to disengage the serrations, and the clamp is unlocked.



② Turn the unlocked lever to desired position.



③ When the lever is released, the return spring automatically engages serrations and locks again.