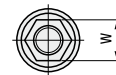
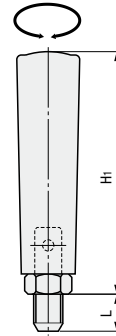
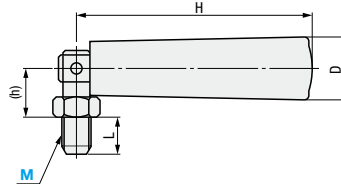


Folding Handle



Type	Lever	Screw, Nut	
	M Material	M Material	S Surface Treatment
C-GRMBM	ABS	Carbon Steel for Mechanical Structure	Black Oxide



- ① The L Dim. Tolerance Range is $\pm 2\text{mm}$.
- ② M8 Size product has no cap provided on the handle tip, while M10/M12 product has this cap provided there.
- ③ To fold the lever, pull up and fold down.
- ④ Folding angle is 90° .

Part Number		L	H	D	(h)	H1	W	Reference Mass (g)	Unit Price
Type	M								
C-GRMBM	8	15	87	23.5	18	91	13.5	71	
	10	19	95	26	20	96	14	129	
	12	24	95	26	21	97	16	136	



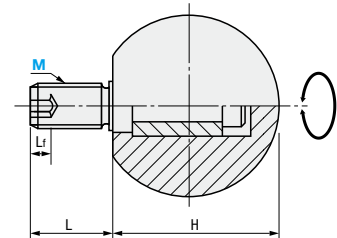
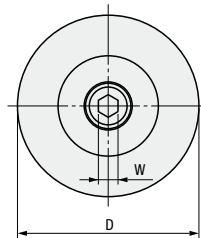
Ordering Example

Part Number
C-GRMBM8

Revolving Ball Knob



Type	Ball	Screw	
	M Material	M Material	S Surface Treatment
C-PBG	Phenol Resin	Carbon Steel for Mechanical Structure	Zinc Plating



- ① The L Dim. Tolerance Range is $\pm 2\text{mm}$.

Part Number		D	H	L	Lf	W	Reference Mass (g)	Unit Price
Type	M							
C-PBG	8	35	32	15	4	4	44	
	10	40	37	18	5	5	99	
	12	50	48	20	6	6	123	



Ordering Example

Part Number
C-PBG8