

# Caster Dual Wheel Type

## Medium Load / Ultra Heavy Load

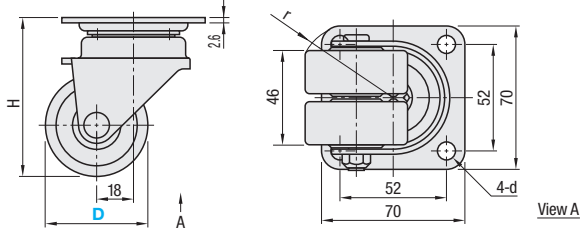
### Medium Load

CWM-P



RoHS 10

Main Body		Wheel	Bearing
M Material	S Surface Treatment	M Material (Color)	Swiveling Part Wheel
SPHC	Trivalent Chromate	Nylon (Black)	Incorporated None



Main Body	Part Number		Wheel Material	H	d	r	Allowable Load (N)	Mass (g)	Unit Price
	Type	D							
Swivel	CWM-P	38	N (Nylon)	64	8.8	44	1200	450	
		50		77					



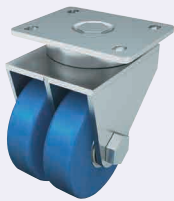
Ordering Example

Part Number - Wheel Material  
**CWM-P38** - **N**

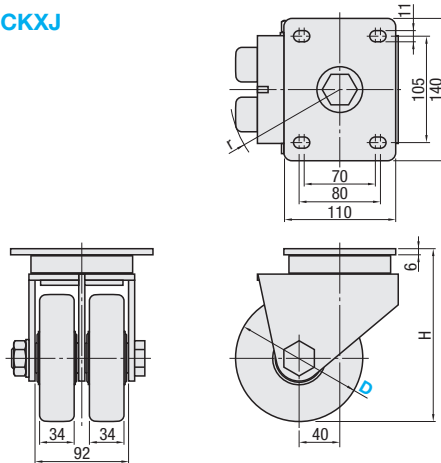
**Features:** Has the max. allowable load in our lineup. Can be used for traction of large processing machines and dedicated devices by motor power.

### Ultra Heavy Load

CKXJ



RoHS 10

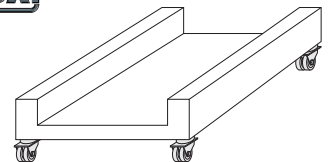


Main Body		Wheel	Bearing
M Material	S Surface Treatment	M Material (Color)	Swiveling Part Wheel
SPHC	Trivalent Chromate	MC Nylon (Blue)	Incorporated Incorporated

Main Body	Part Number		Wheel Material	H	r	Allowable Load (N)	Mass (g)	Unit Price	
	Type	D						1 ~ 4 pc(s)	5 ~ 10 pcs.
Swivel	CKXJ	100	M (MC Nylon)	150	97	10000	5300		
		125		170	109	13000	5700		
		150		200	121	15000	6300		



Example



Ordering Example

Part Number - Wheel Material  
**CKXJ100** - **M**