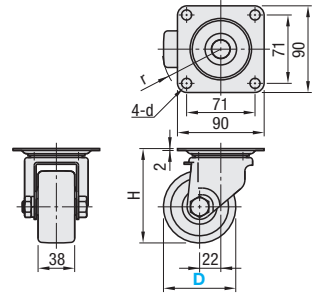


Casters - Ultra Low Profile / Lightweight Low Profile



Part Number	Main Body		Wheel		Seal		Bearing	
	Type	D	M Material	S Surface Treatment	M Material (Color)	M Material	Swiveling Part	Wheel
CGJF	65	SPHC	Trivalent Chromate		Phenol (Black)	None	Incorporated	Incorporated
	65A				Special Reinforced Plastic (Black)			
	75A				Special Reinforced Plastic (Black)			
CGJFM	65				Phenol (Black)			
	75				MC Nylon (Blue)			
CGJFD	65				Electrically Conductive MC Nylon (Black)			
	75				Electrically Conductive MC Nylon (Black)			



Main Body	Part Number		H	d	r	Allowable Load (N)				Mass (g)	Unit Price		
	Type	D				Plastic	Phenol	MC Nylon	Electrically Conductive MC Nylon		CGJF (Plastic, Phenol)	CGJFM (MC Nylon)	CGJFD (Electrically Conductive MC Nylon)
Swivel	CGJF (Plastic, Phenol) CGJFM (MC Nylon) CGJFD (Electrically Conductive MC Nylon)	65	88	10.5	57	-	3000	3000	3000	750			
		65A				3000	-	-	-				
		75	98	61	-	3000	3000	3000	850				
		75A			3000	-	-	-					



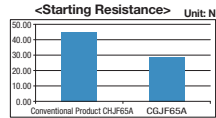
- Features**
- Weight-saving Advantages
 - Main body weighs 25% less than the existing casters (P1075) succeeded in improving caster's safety and easing a burden of an user
 - A success in weight saving helps customers to reduce a cost by improving their logistical efficiencies.
 - Despite of an adoption of a thinner special steel-made plate, its allowable load is not significantly different from that of pre-existing casters.

Comparison of Mass between Pre-existing Casters (Using 4 Casters)

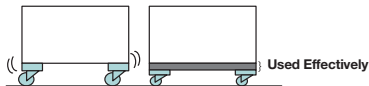
D (Wheel Dia.)	Mass (g)		Weight-saving Percentage
	Pre-existing CHJF	CGJF	
65	3560	2720	-24%
75	3920	2920	-26%



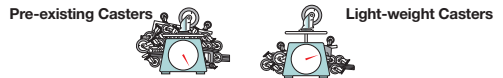
- Improvement in Starting of a Movement
 - With 36% less swiveling resistance, a cart moves smoothly as its starting resistance decreases.



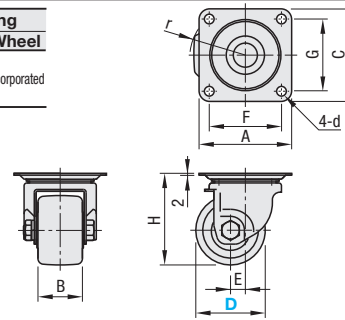
- Lower Installation Height
 - Stability in running have improved as its installation height is lower than that of an equivalent products.
 - It allows effective use of a space created from lower installation height.



- Conservation of Resources
 - Light caster weights lead to cuts in disposal costs.



Part Number	Main Body		Wheel		Seal		Bearing	
	Type	D	M Material	S Surface Treatment	M Material (Color)	M Material	Swiveling Part	Wheel
CGZJ	50	SPHC Special Steel	Trivalent Chromate		Phenol (Black)	None	Incorporated	Incorporated
	65				MC Nylon (Blue)			
	75				Electrically Conductive MC Nylon (Black)			



Main Body	Part Number		Wheel Material	B	H	A	C	F	G	d	E	r	Allowable Load (N)	Mass (g)	Unit Price		
	Type	D													P	N	D
Swivel	CGZJ	50	P (Phenol)	38	74	84	84	64	64	8.5	14	43	3000	600			
		65	N (MC Nylon)	48	89	100	100	78	78	10.5	16	54	4000	1090			
		75	D (Electrically Conductive MC Nylon)	48	99	100	100	78	78	10.5	16	58	5000	1180			



Features

- Weight Saving
- Mounting Height (Lower Profile)



Mass Comparison with Conventional Casters (Using 4 Casters)

D (Wheel Dia.)	Mass (g)		Weight-saving Percentage
	Existing Product CKZJ (P1080)	CGZJ	
50	3280	2400	-27%
65	6360	4360	-31%
75	6720	4720	-30%

Heavy load caster's mass generally becomes greater due to its thick plates. CGZJ Type employed a thinner special steel-made plate to make the product more lightweight than the conventional types.