

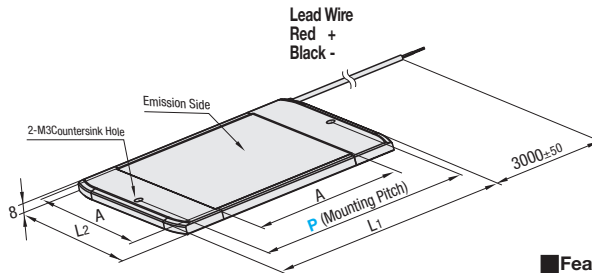
# LED Flat Lights - Square, w/Red Cover

IP20

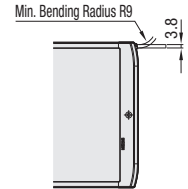


RoHS 10

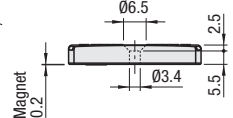
## LEDXR



### Cable Detail



### Side View of the Mounting Interface



### Features

The illuminance uniformity is 80% or more.

Part Name	Material	Surface Treatment
Main Body	Aluminum	Black Paint
Cover for Main Body	Polycarbonate	-
Surface Cover	PET	Mist Surface Treatment
	Acrylic	-
Magnet	Cobalt Magnets	-
Cable	Cross-linked Polyethylene	-

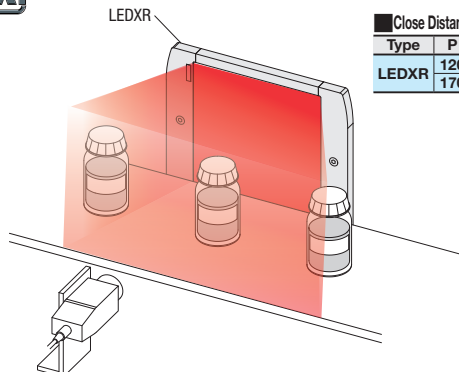
Part Number	Installing Method	L1	L2	A (Emission Surface Dimensions)	Illuminance (Lux, lx)		Input Voltage (V)	Input Current (mA)	Power Consumption (W)	Attraction Force N (kgf)	Temperature Range (°C)	Luminous Intensity Angle	Mass (g)	Unit Price	Volume Discount Rate		
					lx/0.5m	lx/1m									1-4 pc(s)	5-9	10-50
LEDXR	120	Countersunk Hole or Magnet	142	114	100	90	20	DC24 ±10%	330	8	22.5 {2.3}	-20~45	120°	200			
	170		192	164	150	200	50		715	17							

For each detail, see the glossary on P.1055. For order and installation, confirm "Notes on Usage" section on P.1056.

As the LED elements vary on their luminous colors and luminance, they may be slightly different in their colors and brightness, though they are of the same part numbers.

**Ordering Example** Part Number **LEDXR120**

### Example



The red light can be used to inspect for the existence of burrs on caps and for imaging the liquid level.

#### Close Distance Illuminance (Reference)

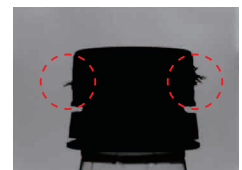
Type	P	lx/25mm	lx/50mm
LEDXR	120	4300	3350
	170	5000	4500

### Example of Imaging Sample With Red Surface Emission Light <<External Inspection of Cap>>



Used Light: LEDXR170-W

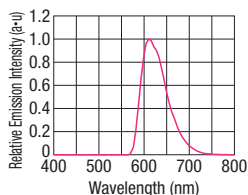
When a black & white image is taken with a white light, a burr is faintly visible on the right side.



Used Light: LEDXR170

By using a red light, in addition to the clearly visible burr on the right side, there is also a visible burr on the left that could not be detected by white light.

### Light Emission Spectrum (Ref.)



#### Structure of Red Beam Emission

Red light is emitted by using a special red polarizing plate. As it is not a red element, the spectral data should be checked beforehand.

Please request a free sample. P.1026

### Installing Method

Can be installed to the metal mating part by using magnets on the both ends of backside. Use the countersunk hole for fixing the lighting.

