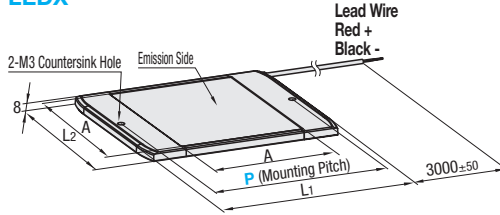


# LED Flat Lights - Square / Dimming Controller Type

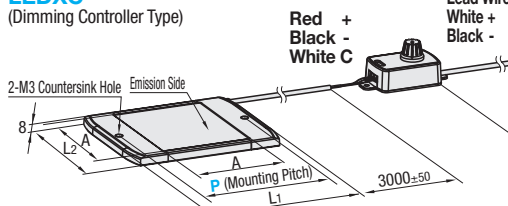
IP20



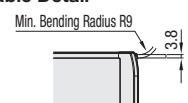
## LEDX



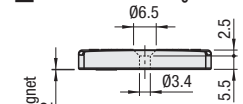
## LEDXC (Dimming Controller Type)



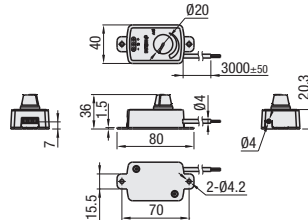
## Cable Detail



## Side View of the Mounting Interface



## Detailed Dimension of Light Controller (Accessory) (LEDX only)



## Features

The illuminance uniformity is 80% or more.

- For AC Adapter and ON / OFF Switch, see P.1054.
- Light Control Unit is not sold separately.

Part Name	Material	Surface Treatment
Main Body	Aluminum	Black Paint
Cover for Main Body	Polycarbonate	-
Surface Cover	PET	Mist Surface Treatment
Magnet	Cobalt Magnets	-
Cable	Cross-linked Polyethylene	-
Light Controller	ABS Resin	-

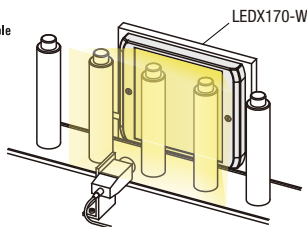
Part Number	Color	Installing Method	L1	L2	A (Emission Surface Dimensions)	Illuminance (Lux, lx)		Fluorescent lamp illumination comparison (Ref.)	Input Voltage (V)	Input Current (mA)	Power Consumption (W)	Attraction Force (N/kgf)	Temperature Range (°C)	Color Temperature (Kelvin, K)	Luminous Intensity Angle	Mass (g)	LEDX			LEDXC				
						W (White) lx/0.5m	lx/1m										Unit Price 1-4 pc(s)	Volume Discount Rate 5-9	10-	Unit Price 1-4 pc(s)	Volume Discount Rate 5-9	10-		
LEDX	120	W (White)	Countersink Hole or Magnet	142	114	100	600	160	20W~	24	330	8	22.5 (2.3)	-20	45	5000	120°	200						
LEDXC (Dimming Controller Type)	170	W (White)	Countersink Hole or Magnet	192	164	150	1300	340	40W~	24	715	17	45 (4.6)	-20	45	5000	120°	400						

- The data for LEDXC (Dimming Controller Type) show the values at the maximum.
- For each detail, see the glossary on P.1055.
- For order and installation, confirm "Notes on Usage" section on P.1056.
- As the LED elements vary on their luminous colors and luminance, they may be slightly different in their colors and brightness, though they are of the same part numbers.

Close Distance Illuminance (Reference)			
Type	P	lx/25mm	lx/50mm
LEDX	120	28000	21000
	170	32000	28000

Ordering Example  
 LEDX120 - W  
 LEDXC170 - W

Example

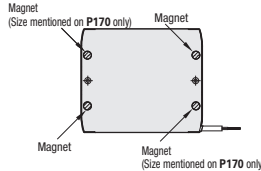


It can be used as a simple image inspection light for large work.

## Installing Method

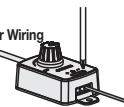
Can be installed to the metal mating part by using magnets on the both ends of backside. Use the countersunk hole for fixing the lighting.

### <Back Side Details>



## Example of Dimmer Controller Wiring

Insert the leads and tighten the screws with a Phillips screwdriver.



- When screw tightening the leads, be sure to disconnect the power or turn the power OFF.

## About power ON/OFF function

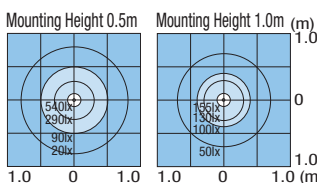
When the knob is turned all the way to the left, a click will be heard and the power will be OFF.



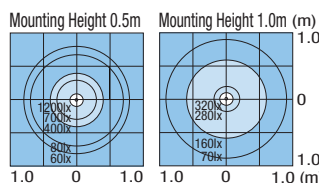
- The Dimming is by pulse control.

## Illuminance Data (Ref.)

LEDX120-W/LEDXC120-W



LEDX170-W/LEDXC170-W



- The data for LEDXC (Dimming Controller Type) show the values at the maximum.

## Light Emission Spectrum

