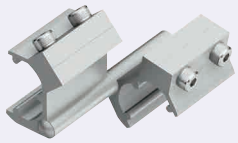


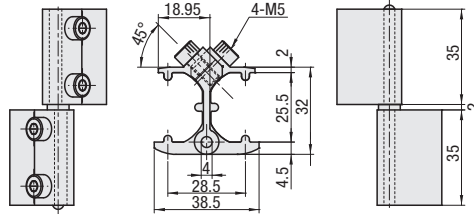
# Door Parts for Factory Frames

## Hinges for Factory Frames



RoHS10

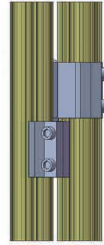
FFH



Material: A6063 Surface Treatment: Clear Anodize



Example



| Part Number | Allowable Load | Mass | Included Screw | Unit Price  | Volume Discount Rate |
|-------------|----------------|------|----------------|-------------|----------------------|
| Type        | No.            | (N)  | (g)            | 1-100 pc(s) | 101-200              |
| FFH         | 1              | 98   | 22 M5-12       | 4           |                      |



Ordering Example

Part Number

FFH1

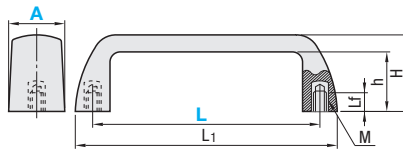
For orders larger than indicated quantity, please check with WOS.

## Handles



RoHS10

UPFN (Nylon 6)



| Material         |                               |
|------------------|-------------------------------|
| Handle           | Fiberglass Reinforced Nylon 6 |
| Threaded Section | Brass (Insert)                |



Part Number - L - Handle Color

UPFN26 - 105 - B

| Part Number | A  | L   | Handle Color | L1  | H  | h  | M (Coarse) | Lf | Allowable Load (N) | Mass (g) | Unit Price                                |
|-------------|----|-----|--------------|-----|----|----|------------|----|--------------------|----------|---|
| Type        |    |     |              |     |    |    |            |    |                    |          | B (Black), W (White), M (Orange), R (Red) |
| UPFN        | 26 | 105 | B (Black)    | 121 | 37 | 29 | 6          | 9  | 500                | 55       |   |
|             |    | 110 | W (White)    | 133 | 40 | 32 | 6          |    |                    | 60       |   |
|             |    | 117 | R (Red)      |     |    |    | 8          |    |                    | 62       |   |

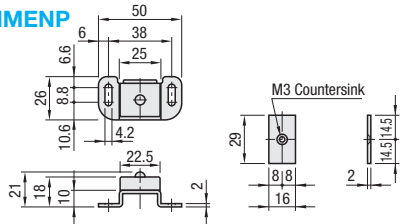
The default handle color will be black unless otherwise specified.

## Magnetic Catches for Panels

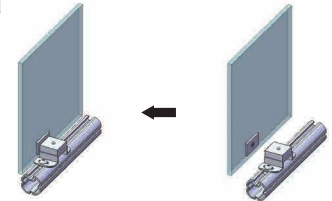


RoHS10

HMENP



Example



| Part Name | Material | Surface Treatment  |
|-----------|----------|--------------------|
| Housing   | SUS304   | Dark Brown Paint   |
| Magnet    | Ferrite  | -                  |
| Plate     | SPCC     | Trivalent Chromate |



Ordering Example

Part Number

HMENP

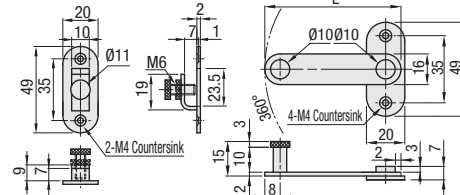
For orders larger than indicated quantity, please check with WOS.

## Slide Locks



RoHS10

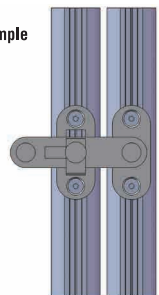
HSIKJ



Material: SUS304 Surface Treatment: Buffed Finish



Example



| Part Number | No. | L  | Applicable Screw and Nut |           | Unit Price | Volume Discount Rate |
|-------------|-----|----|--------------------------|-----------|------------|----------------------|
| Type        |     |    | Screw                    | Qty.      | 1, 2 pc(s) | 3-100                |
| HSIKJ       | 5   | 61 | SHFBS4-6                 | HNTASN5-4 |            |                      |
|             | 6   | 71 | SHFBS4-8                 | HNTASN6-4 | 4          |                      |
|             | 8   | 81 | SHFBS4-10                | HNTASN8-4 | 4          |                      |



Ordering Example

Part Number

HSIKJ5



Alterations

Part Number - (SET)

HSIKJ5 - SET

6 and 8 are for Aluminum Frames.

Pre-Assembly Insertion Nuts can also be used.

For orders larger than indicated quantity, please check with WOS.

| Alteration                        | Code | Spec.                                     | Type  | No. |
|-----------------------------------|------|---|-------|-----|
| Set of applicable Screws and Nuts | SET  | Applicable screws and nuts come as a set. | HSIKJ | 5   |

Post-assembly Insertion Nuts are used.