

Note that, for some of the types shown here, order might be unable to be received by the MISUMI Malaysia, Indonesia and/or India offices.

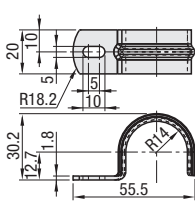
# Accessories for Factory Frames

RoHS10

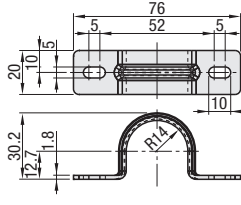


Part Number	M Material	S Surface Treatment
FFS101	SPCC	Trivalent Chromate
FFS102		
FFS103	Polyethylene	
FFS107	Polypropylene	

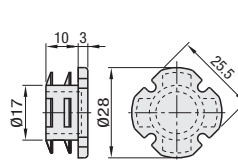
### ■ Saddles with One Fixing FFS101 (Set of 4)



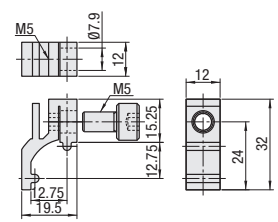
### ■ Saddles with Two Fixings FFS102 (Set of 4)



### ■ Inner Cap FFS103 (Set of 4)(Applicable Frame: FFA28)

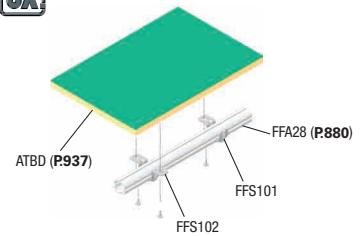


### ■ Panel Holder FFS107



Part Number	Mass (g/pc.)	Pcs. per Pkg.	Unit Price
FFS101	19	4	
FFS102	24	4	
FFS103	4	4	
FFS107	8	1	

⚠ Please note the quantity when ordering per package.

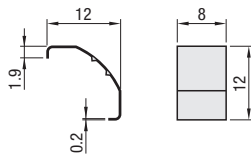


RoHS10



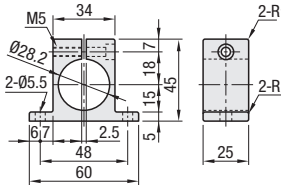
Part Number	M Material	S Surface Treatment
FFS104	SUS304	
FFS105	A6063	Clear Anodize
FFS106	SS400	Chrome Plating

### ■ Conductive Plate FFS104 (Set of 50)



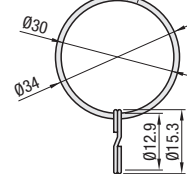
⚠ By inserting in between the frame tube and the joint, it scrapes the anodized surface to gain electrical continuity. (See the App. Examples below.)

### ■ Clamp for Factory Frame FFS105



⚠ Accessory: Hex Socket Head Cap Screw M5-22 x 1 pc.

### ■ Ring Slider FFS106 (Set of 10)



Part Number	Mass (g/pc.)	Pcs. per Pkg.	Unit Price
FFS104	1	50	
FFS105	70	1	
FFS106	14	10	

⚠ Please note the quantity when ordering per package.

