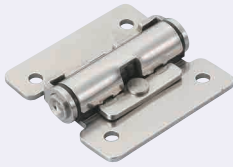


Torque Hinges

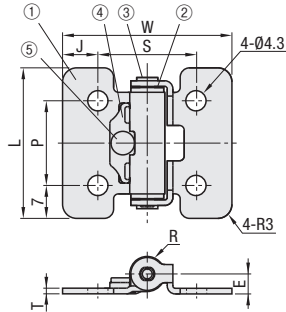
Fixed Torque Type, Adjustable Torque Type

Fixed Torque Type



RoHS10

HHPT



Operating Temp. Range: -10°C ~ 50°C
Operating Humidity Range: 90% RH or less

Cautions on Use

- Use 2 pcs. per door (flap).
- Place the axes of 2 hinges on a common line.
- Do not use in places where oil or grease contacts, or in the outdoors.
- Do not use for locations requiring frequent open/close.
- Since the product is not designed for vertical use in mind, figure the allowable load and torque based on actual application.

Part Name	Material
① Wing	SUS304
② Resin Tube	Polyacetal
③ Shaft	SUS303
④ Plate	SUS304
⑤ Swage Pin	SUSXM7

For section of Torque Hinges, refer to selection reference formula on P.1205.

Part Number	* Torque Rating	Mass (g)	L	W	P	J	S	T	E	R	Extrusion (Series)	Screw, Nut				Unit Price	Volume Discount Rate		
												Screw	Quantity	Nut	Quantity				
HHPT	3	0.35	3.4	15	32	36	18	7.5	21	1.2	4.25	7.5	HFS5	Hex Socket Head Cap Screw 4-6	4	HNTT5-4	4	1 ~ 19 pc(s).	20-50
	7	0.7	6.9	28	40	48	26	8	32	1.2	4.75	8.5	HFS6	Hex Socket Head Cap Screw 4-10	4	HNTT6-4	4		
	15	1.5	14.7	64	50	48	36	8	32	2	6.5	12							

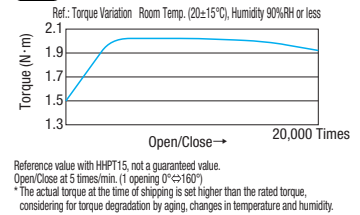
* The Torque Rating may have tolerance ranges about +40% ~ -20%.
* The torque value of 1 pc. of hinge is shown as the Torque Ratings.

Ordering Example
Part Number: **HHPT15**

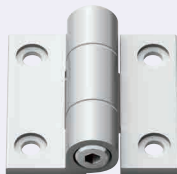
Alterations
Part Number: **HHPT7** - (SET)
SET

Example

Alteration	Code	Spec.	Hinge	No.
Applicable Screw and Nut Set	SET	Applicable screws and nuts come in a set. Stainless steel screws and nuts are included.	HHPT	3
				7
				15

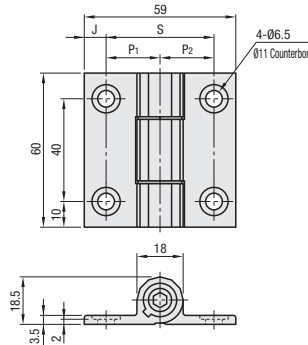


Adjustable Torque Type



RoHS10

HHPTF HHPTFB



For section of Torque Hinges, refer to selection reference formula on P.1205.

Part Name	Material	Surface Treatment
Caster	A6063	Anodize
Bushing	Polyacetal (White)	-
Hex Socket Head Cap Screw	SUSXM7	-

Part Number	* Allowable Load	** Torque Rating	Mass (g)	S	P1	P2	J	Screw, Nut				Clear Anodize		Black Anodize				
								Screw	Quantity	Nut	Quantity	Unit Price	Volume Discount Rate	Unit Price	Volume Discount Rate			
HHPTF HHPTFB (Black Anodize)	6	10	98	0~4.9	0~50	54	32	16	16	13.5	Hex Socket Head Cap Screw 6-10	4	HNTT6-6	4	1~8 pc(s).	9-50	1~8 pc(s).	9-50
	8-6						37	16	21	13.5	Hex Socket Head Cap Screw 6-10	2	HNTT6-6	2				
	8						42	21	21	8.5	Hex Socket Head Cap Screw 6-12	4	HNTT8-6	4				

* The allowable load is the value when 2 pieces are used.
** The torque value of 1 pc. of hinge is shown as the Torque Rating.

Ordering Example
Part Number: **HHPTF8**

Alterations
Part Number: **HHPTF6** - (SET, SST)
SST

Example

Alterations	Code	Spec.	Hinge	No.
Applicable Screw and Nut Set	SET SST (Stainless Steel)	Applicable screws and nuts come in a set. When SST is specified, screws and nuts will be in stainless steel. When SET is specified, the product is not RoHS compliant. When SET is specified, the material of the screws is Bright Chromate SCM5	HHPTF HHPTFB	6
				8-6
				8

The torque value is adjustable using a Hex Wrench.
Swaging by 1.5N·m or more using a Hex wrench may break the Hinges.

