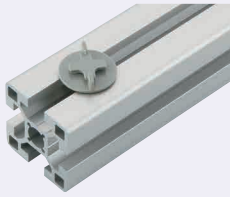


Note that, for some of the types shown here, order might be unable to be received by the MISUMI Thailand, Malaysia, Indonesia, and/or India offices.

# Cable Clamps

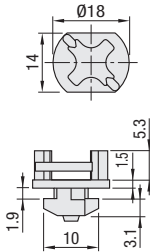
## Cable Clamps - Diamond Shape



Material: Polyamide (Light Gray)  
The photo is of HFCN8.

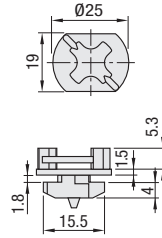
RoHS10

### HFCN5 PACK (50 pcs./pkg.)

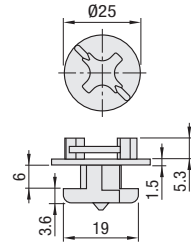


Attachable by hand.

### HFCN6 PACK (50 pcs./pkg.)



### HFCN8 PACK (50 pcs./pkg.)



Part Number		Extrusion (Series)	Unit Price 1 ~ 2 pkg(s).	Volume Discount Rate 3~30
Type	No.			
HFCN	5PACK	HFS5		
	6PACK	HFS6		
	8PACK	HFS8 HFS8-45		

50 pcs. per pkg.



Alterations

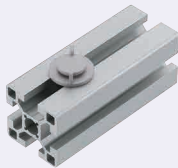


Part Number - (SET)  
HFCN6PACK - SET

Alteration	Code
Set of 300 pcs.	SET

When ordering, please note the quantity. 300 pcs. will be delivered for an order of one HFCN5PACK-SET.

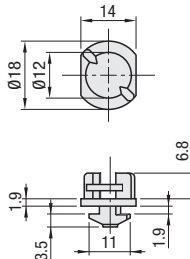
## Cable Clamps - Circular



Material: Polyamide (Light Gray)  
The photo is of HFCC8.

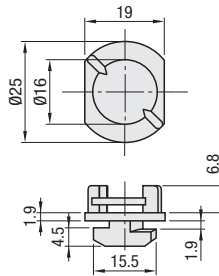
RoHS10

### HFCC5 PACK (50 pcs./pkg.)

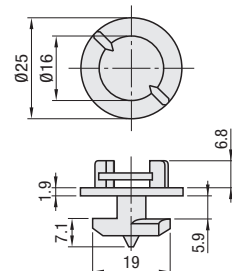


Attachable by hand.

### HFCC6 PACK (50 pcs./pkg.)



### HFCC8 PACK (50 pcs./pkg.)



Part Number		Extrusion (Series)	Unit Price 1 ~ 2 pkg(s).	Volume Discount Rate 3~30
Type	No.			
HFCC	5PACK	HFS5		
	6PACK	HFS6		
	8PACK	HFS8 HFS8-45		

When using No. 8 for HFS8-45, the fit becomes slightly firmer.  
50 pcs. per pkg.



Alterations



Part Number - (SET)  
HFCC6PACK - SET

Alteration	Code
Set of 300 pcs.	SET

When ordering, please note the quantity. 300 pcs. will be delivered for an order of one HFCC5PACK-SET.

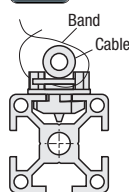


Ordering Example

Part Number  
HFCC6PACK

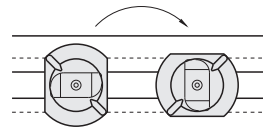


Example

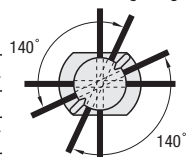


Mounting

Turns 90 deg.



Band Binding Range



Cables can be fixed to extrusions with cable ties.

Bands are not included.