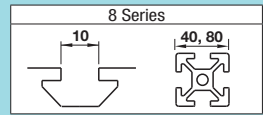
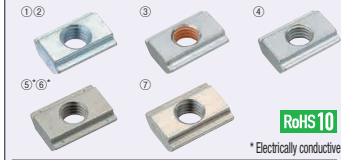


# Post-Assembly Insertion Nuts / Stoppers for Aluminum Extrusions - Standard For 8 Series (Slot Width 10mm)



## Post-Assembly Insertion Stopper Nuts

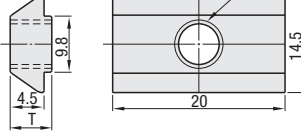


RoHS 10

\* Electrically conductive

Type	M Material	S Surface Treatment
① HNTA8	S10C Equivalent	Trivalent Chromate
② PACK-HNTA8		
③ HNTAV8		
④ HNTAZ8		
⑤ HNTASN8*	SUS316 Equivalent (Sintered)	-
⑥ PACK-HNTASN8*		
⑦ HNTASS8		

**HNTA8** (S10C Equivalent)  
**PACK-HNTA8** (S10C Equivalent, 100/pkg.)  
**HNTAV8** (Thread Locking Adhesive Type, S10C Equivalent)  
**HNTAZ8** (Thread Locking Resin Coating Type, S10C Equivalent)  
**HNTASN8** (SUS316 Equivalent, Sintered)  
**PACK-HNTASN8** (SUS316 Equivalent, Sintered, 100/pkg.)  
**HNTASS8** (SUS303 Equivalent)



### Reference Tightening Torque (N·m)

M	Reference Tightening Torque (N·m)
8	23.5

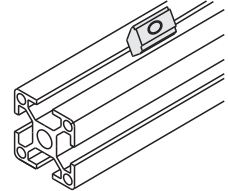
\*Details of Thread Locking Type P.670



Example

### Post-Assembly Insertion Stopper Nuts

HNTA  
HNTAV  
HNTAZ  
HNTASN  
HNTASS



Part Number Type	M	T	Unit Price				Volume Discount Rate				
			1 - 499 pc(s).	500-749	750-999	1000-1500	1 - 499 pc(s).	500-749	750-999	1000-1500	
<b>HNTA8</b> (S10C Equivalent)	4 5 6 8	6.5									
<b>HNTAV8</b> (Thread Locking, S10C Equivalent)	8										
<b>HNTAZ8</b> (Thread Locking, S10C Equivalent)	8										
<b>HNTASN8</b> (SUS316 Equivalent, Sintered)	4 5 6 8	6.0									
<b>HNTASS8</b> (SUS303 Equivalent)	8	6.5									



Ordering Example

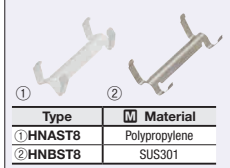
Part Number - M  
HNTA8 - 8

### Bulk Packages 100 pcs. per package

Part Number	M	Unit Price (1 ~ 10 packages)	
		Package Price	Price per Pkg.
<b>PACK-HNTA8</b> (S10C Equivalent)	4 5 6 8		
<b>PACK-HNTASN8</b> (SUS316 Equivalent, Sintered)	4 5 6 8		

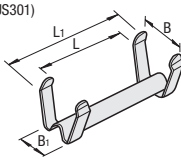
## Post-Assembly Insertion Stoppers

RoHS 10



Type	M Material
① HNAST8	Polypropylene
② HNBST8	SUS301

**HNAST8** (Polypropylene)  
**HNBST8** (SUS301)



Part Number Type	Applicable Stopper Nut	Color	L	B	L1	B1	Unit Price			Volume Discount Rate		
							1 - 499 pc(s).	500-999	1000-1500	1 - 499 pc(s).	500-999	1000-1500
<b>HNAST8</b>	HNTA8	White	21	11	26	9.8						
	HNTAV8											
	HNTAZ8											
<b>HNBST8</b>	HNTASN8	-	23	12.5	28	8						
	HNTASN8											
	HNTASS8											

## Post-Assembly Insertion Nut and Stopper Set

RoHS 10



Type	B Stopper Nut	A Stopper
HNTAT8	HNTA8	HNAST8
HNTATS8*	HNTASN8	HNAST8

**HNTAT8** (S10C Equivalent Set)  
**HNTATS8** (SUS316 Equivalent Set)  
 \* Electrically conductive

## Post-Assembly Insertion Nut and Metal Stopper Set

RoHS 10



Type	B Stopper Nut	A Stopper
HNTBT8	HNTA8	HNBST8
HNTBTS8*	HNTASN8	HNBST8

**HNTBT8** (S10C Equivalent Set)  
**HNTBTS8** (SUS316 Equivalent Set)  
 \* Electrically conductive

Part Number Type	M	Unit Price				Volume Discount Rate			
		1 - 499 pc(s).	500-749	750-999	1000-1500	1 - 499 pc(s).	500-749	750-999	1000-1500
<b>HNTAT8</b>	4 5 6 8								
<b>HNTATS8</b>	4 5 6 8								

Part Number Type	M	Unit Price				Volume Discount Rate			
		1 - 499 pc(s).	500-749	750-999	1000-1500	1 - 499 pc(s).	500-749	750-999	1000-1500
<b>HNTBT8</b>	4 5 6 8								
<b>HNTBTS8</b>	4 5 6 8								



Ordering Example

Part Number - M  
HNAST8  
HNTAT8 - 8

## Post-Assembly Insertion Nuts

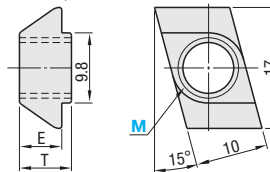


RoHS 10

\* Electrically conductive

Type	M Material	S Surface Treatment
① HNTF8	S10C Equivalent	Trivalent Chromate
② HNTFV8		
③ HNTFZ8		
④ HNTFSN8*		

**HNTF8** (S10C Equivalent)  
**HNTFV8** (Thread Locking Adhesive Type, S10C Equivalent)  
**HNTFZ8** (Thread Locking Resin Coating Type, S10C Equivalent)  
**HNTFSN8** (SUS316 Equivalent, Sintered)



### Reference Tightening Torque (N·m)

M	Reference Tightening Torque (N·m)
8	23.5

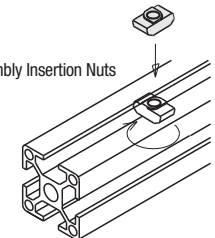
\*Details of Thread Locking Type P.670



Example

### Post-Assembly Insertion Nuts

HNTF  
HNTFV  
HNTFZ  
HNTFSN



Ordering Example

Part Number - M  
HNTF8 - 8

Part Number Type	M	E	T	Unit Price				Volume Discount Rate			
				1 - 499 pc(s).	500-749	750-999	1000-1500	1 - 499 pc(s).	500-749	750-999	1000-1500
<b>HNTF8</b> (S10C Equivalent)	4 5 6 8	6.0	9.0								
<b>HNTFV8</b> (Thread Locking, S10C Equivalent)	8										
<b>HNTFZ8</b> (Thread Locking, S10C Equivalent)	8										
<b>HNTFSN8</b> (SUS316 Equivalent, Sintered)	4 5 6 8	6.4	8.9								