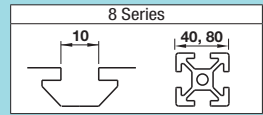


Free Angle Brackets

For 8 Series (Slot Width 10mm) Aluminum Extrusions



Features: Extrusions can be connected at any arbitrary angles.

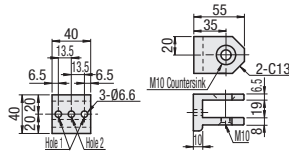
Free Angle Brackets



Type	Material	Surface Treatment
HBLTBA40 HBLTBBN40 HBLTBC40 HBLTBD40	A6N01SS-T5	Anodize
Included Screw	SCM435	Trivalent Chromate

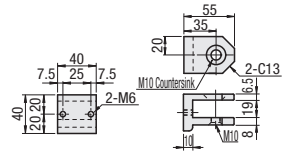
Extrusion Side Face Connection Type

HBLTBA40 (An order of quantity 1 includes 1 pc.)



Extrusion Cross Section Connection Type

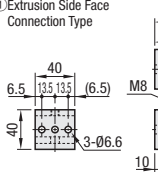
HBLTBBN40 (An order of quantity 1 includes 1 pc.)



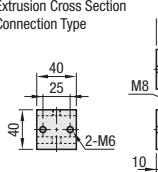
Clamp Lever Type

HBLTBC40 (An order of quantity 1 includes 1 pc. each of ① and ③.)
HBLTBD40 (An order of quantity 1 includes 1 pc. each of ② and ③.)

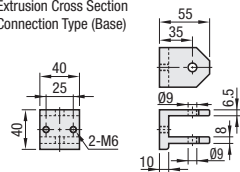
① Extrusion Side Face Connection Type



② Extrusion Cross Section Connection Type



③ Extrusion Cross Section Connection Type (Base)



Part Number Type	Applicable Extrusion No.	Mass (g)	Accessory	Unit Price 1 ~ 14 pc(s)	Volume Discount Rate 15 ~ 50
HBLTBA	40	97	M10x16		
HBLTBBN	40 Square (HFS8)	98			
HBLTBC		267	CLDM8-40-M		
HBLTBD		269			



Part Number - (SET, SET1, SET2, SET3, SET4, SET5)
HBLTBA40 - SET2
HBLTBBN40 - SET

Alterations	Code	How to Use	Part Number Type No.	Accessory			
				Screw	Quantity	Notes, Pre-Assembly Insertion Double Joints	Quantity
Applicable Screws and Nuts Set	SET		HBLTBBN	CBM6-35	2	HDJFSN8	1
	SET1	Use the hole 1.	HBLTBA	CBM6-20	2	HNTT8-6	2
	SET2	Use the hole 2.	HBLTBA	CBM6-20	1	HNTT8-6	1
	SET3	Use the hole 1.	HBLTBC	CBM6-35	2	HDJFSN8	1
	SET3	Use the hole 1.	HBLTBC	CBM6-20	2	HNTT8-6	2
	SET4	Use the hole 2.	HBLTBC	CBM6-35	2	HDJFSN8	1
	SET4	Use the hole 2.	HBLTBC	CBM6-20	1	HNTT8-6	1
	SET5		HBLTBD	CBM6-35	4	HDJFSN8	2
	SET5		HBLTBD	CBM6-35	4	HDJFSN8	2

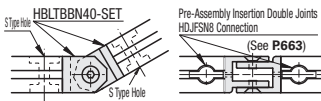
Ordering Example
Part Number
HBLTBA40

When connecting with Pre-Assembly Insertion Double Joints, S type hole machining (P765) is required on extrusions.
Included Screw is not RoHS compliant when -SET is specified.



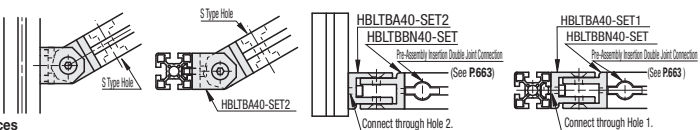
(1) Connection of Two End Sections

Two pieces of HBLTBBN are used to connect two end sections using Pre-Assembly Insertion Double Joints (P663). (With Clamp Lever Type: HBLTBD40)



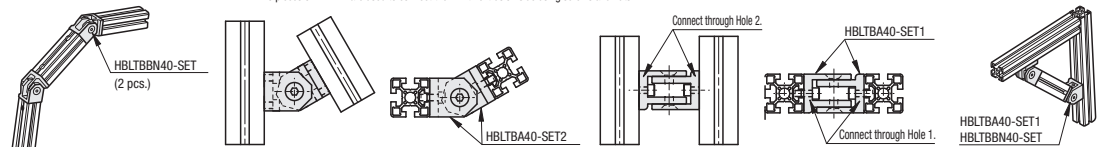
(2) Connection of Two Side Faces

To the extrusion side face, connect with HBLTBA, a screw and a nut. To the end face, use 1 HBLTBBN for 1 HBLTBA using Pre-Assembly Insertion Double Joints. (With Clamp Lever Type: HBLTBC40)



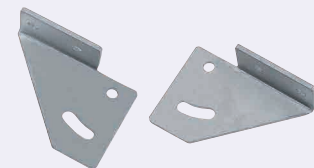
(3) Connection of Two Side Faces

Two pieces of HBLTBA are used to connect them with extrusion side using screws and nuts.



Features: Sheet Metal Brackets to fix at arbitrary positions.

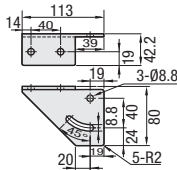
Free Angle Sheet Metal Brackets



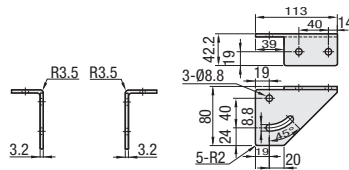
Material: SPCC
Surface Treatment: Trivalent Chromate



HBLPBL



HBLPBR



Ordering Example
Part Number
HBLPBL8

Part Number Type	No.	Applicable Extrusion	Applicable Screw and Nut Hex Socket Head Cap Screws with Captured Washer	Unit Price 1-99 pc(s)	Volume Discount Rate 100-150
HBLPBL HBLPBR	8	40 Square (HFS8)	CBST8-15 HNTT8-8	4	4



Part Number - (SET, SET1)
HBLPBL8 - SET

Alterations	Code	Spec.	Applicable Bracket
Applicable Screws and Nuts Set	SET	Supplies a set of applicable screws and nuts for fixing the bracket to an extrusion.	HBLPBL8 HBLPBR8
Set with applicable screws, nuts and clamp levers	SET1	Applicable Screw: 3 pcs. Clamp Lever (LNP): 1 pc. Flat Washer (PW): 1 pc. Applicable Nut: 4 pcs. Set with the above items.	HBLPBL8 HBLPBR8

