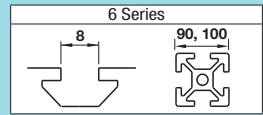


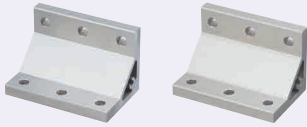
Extruded Brackets - For 3 or More Slots

For 6 Series (Slot Width 8mm) Aluminum Extrusions

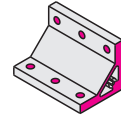
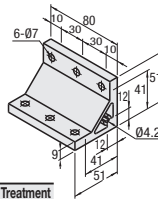


■ **Features:** Extruded Brackets to connect Extrusions with 3 slots (HFS6-3090, etc.) with one bracket.

■ **Thick Brackets**



NBLTT6
HBLTT6



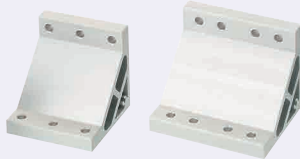
⚡ Both sides and screw holes of NBLTT6 is not anodized.

Type	Material	Surface Treatment
NBLTT6	A6063S-T5	Anodize ⚡
HBLTT6	A6N01SS-T5	

Part Number	Mass (g)	Applicable Screw, T Nut			Allowable Load (N)	Unit Price	Volume Discount Rate
		Screw	Quantity	T Nut			
NBLTT6	180	CBM6-15	6	HNTT6-6	6	2744	100-200
HBLTT6							

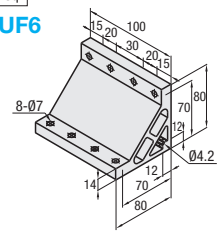
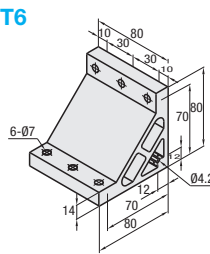
■ **Features:** Brackets to connect Extrusions with 3 slots and 4 slots (HFS6-3090, 50100 etc.) with one bracket.

■ **Ultra Thick Brackets**



HBLUT6

For 100 Sq.
HBLUF6



Material: A6N01SS-T5
Surface Treatment: Anodize

Part Number	Mass (g)	Applicable Screw, T Nut			Allowable Load (N)	Unit Price	Volume Discount Rate
		Screw	Quantity	T Nut			
HBLUT6	409	CBM6-20	6	HNTT6-6	6	2744	100-200
HBLUF6							
HBLUF6	512		8	HNTT6-6	8	2940	

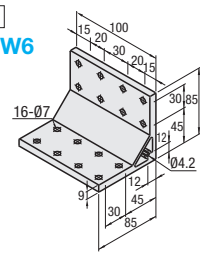
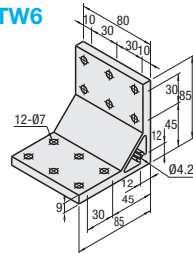
■ **Features:** Brackets for 3-slot / 4-slot extrusions with 6 / 8 mounting holes on one side can connect extrusions more securely.

■ **Thick Brackets**



HBLTTW6

For 100 Sq.
HBLTFW6



Material: A6N01SS-T5
Surface Treatment: Anodize

Part Number	Mass (g)	Applicable Screw, T Nut			Allowable Load (N)	Unit Price	Volume Discount Rate
		Screw	Quantity	T Nut			
HBLTTW6	308	CBM6-15	12	HNTT6-6	12	4116	100-200
HBLTFW6							
HBLTFW6	384		16	HNTT6-6	16	4410	



Ordering Example
Part Number
HBLTT6



Alterations Part Number - (C, SET, SST, SEU, SSU, SEP, SSP, SEC)
HBLTT6 - **SET**

Alterations	Code	Spec.	Applicable Bracket
Mounting Hole Alteration for Cover	C	Adds taps on a bracket for cover mounting. (M5 on Both Sides, Depth 15mm) (Mounting Screw HCBM on P.754)	HBLTT6
			HBLUF6
			HBLTTW6
			HBLTFW6

Alterations	Code	Spec.	Applicable Bracket
Applicable Screws and Nuts Set	SET SST (Stainless Steel)	Applicable screws and nuts for fixing the brackets on extrusions come in a set. (Adds to the bracket price) (Ex.) When HBLTT6 is specified: Code Screw Nut SET CBM6-15 HNTT6-6 SST SCB6-15 HNTT6-6 SEU CBM6-15 HNTT6-6 SSU CBM6-15 SHNTT6-6 SEP CBM6-15 HNTT6-6 SSP SCB6-15 SHNTT6-6 SEC HCBST6-20 HNTT6-6 ⚡ When specifying other than HBLTT6, check for the applicable screws and nuts.	HBLTT6
	SEU (Pre-Assembly Insertion Spring Nuts)		HBLTT6
	SSU (Pre-Assembly Insertion Spring Nuts)		HBLUT6
	SEP (Post-Assembly Insertion Spring Nuts)		HBLUF6
	SSP (Post-Assembly Insertion Spring Nuts)		HBLTTW6
	SEC (Screws with Captured Washer and Nuts)		HBLTFW6

⚡ Included Screw is not RoHS compliant when -SET, -SEU or -SEP are specified.