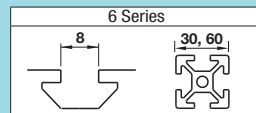


Note that, for some of the types shown here, order might be unable to be received by the MISUMI Malaysia, and/or Indonesia offices.

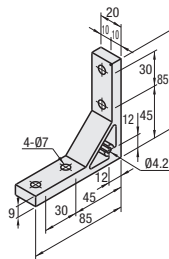


■ **Features:** Extruded Brackets with two mounting holes on one side can connect extrusions more securely.

■ **Thick Brackets**



HBLTSW6



■ **Material:** A6N01SS-T5
 ■ **Surface Treatment:** Anodize

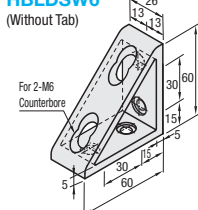
Part Number Type	Mass (g)	Applicable Screw, T Nut				Allowable Load (N)	Unit Price 1-99 pc(s)	Volume Discount Rate 100-200
		Screw	Quantity	T Nut	Quantity			
HBLTSW6	76	CBM6-15	4	HNTT6-6	4	1764		

■ **Features:** Brackets with two mounting holes on one side can connect extrusions more securely.

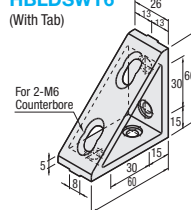
■ **Triangle Brackets**



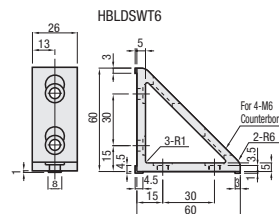
HBLDSW6
(Without Tab)



HBLDSW6
(With Tab)



■ **Material:** A6N01SS-T5
 ■ **Surface Treatment:** Anodize

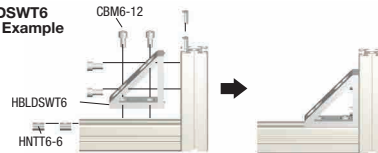


Part Number Type	Mass (g)	Applicable Screw, T Nut				Allowable Load (N)	Unit Price 1-99 pc(s)	Volume Discount Rate 100-200
		Screw	Quantity	T Nut	Quantity			
HBLDSW6	100	CBM6-12	4	HNTT6-6	4	1764		
HBLDSW6	110	CBM6-12	4	HNTT6-6	4	1764		



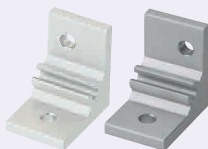
Example

■ **HBLDSW6**
App. Example

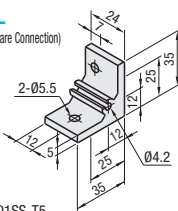


■ **Features:** Brackets to connect 30, 20 square Extrusions.

■ **Assembly Brackets for Different Extrusion Sizes**

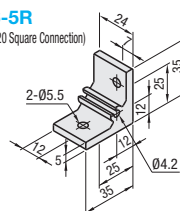


HBLTS6-5L
(For 30 Square - 20 Square Connection)



■ **Material:** A6N01SS-T5
 ■ **Surface Treatment:** Anodize

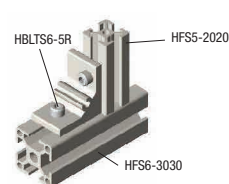
HBLTS6-5R
(For 30 Square - 20 Square Connection)



Part Number Type	Mass (g)	Applicable Screw, T Nut				Allowable Load (N)	Unit Price 1-99 pc(s)	Volume Discount Rate 100-200
		Screw	Quantity	T Nut	Quantity			
HBLTS6-5L	26	CBM5-12	1	HNTT6-5	1	-		
CBM5-10		HNTT5-5						
CBM5-12		HNTT6-5						
CBM5-10		HNTT5-5						



Example



Ordering Example Part Number **HBLTSW6**

Alterations Part Number (C, SET, SST, SEU, SSU, SEP, SSP, SEC) **HBLTSW6 - SET**

Alterations	Code	Spec.	Applicable Bracket
Mounting Hole Alteration for Cover	C	Adds taps on a bracket for cover mounting. (M5 on Both Sides) (Mounting Screw HCBM on P.754)	HBLUS6
			HBLTH6
			HBLTF6
			HBLTSW6
			HBLTS6-5L
			HBLTS6-5R

Alterations	Code	Spec.	Applicable Bracket
Applicable Screws and Nuts Set	SET SST (Stainless Steel)	Applicable screws and nuts for fixing the brackets on extrusions come in a set. (Adds to the bracket price)	HBLUS6
	SEU (Pre-Assembly Insertion Spring Nuts)		HBLUS6
	SSU (Pre-Assembly Insertion Spring Nuts Stainless Steel)		HBLTH6
	SEP (Post-Assembly Insertion Spring Nuts)		HBLTF6
	SSP (Post-Assembly Insertion Spring Nuts Stainless Steel)		HBLTSW6
	SEC (Screws with Captured Washer and Nuts)		HBLDSW6
			HBLDSW6
			HBLTS6-5L
			HBLTS6-5R

⚠ Screws for black anodized brackets are HCBMTB (Trivalent Chromate Black) on P.751.

⚠ Included Screw is not RoHS compliant when -SET, -SEU or -SEP other than black anodized brackets is specified.