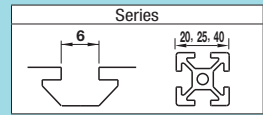


Plate Brackets / Block Brackets

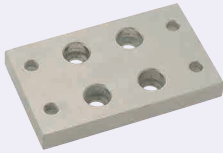
For 5 Series (Slot Width 6mm) Aluminum Extrusions



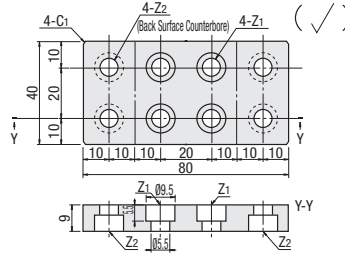
■ **Features:** Direct screw-on brackets to use on tapped extrusions.

Plate Brackets

HBLPL5-4040



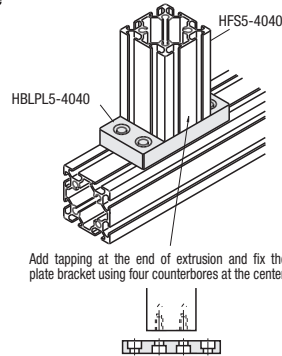
M Material : SS400
S Surface Treatment: Electroless Nickel Plating



Part Number Type	Extrusion	Z1 Applicable Screw	Z2 Applicable Screw	Mass (g)	Unit Price 1 ~ 9 pc(s).	Volume Discount Rate 10-50
HBLPL5	4040	M5	M5	210		



Example



Ordering Example Part Number - Extrusion
HBLPL5 - 4040



Alteration Example Part Number - Extrusion - (DC)
HBLPL5 - 4040 - DC10

Alteration	Code	Spec.
Through Hole 	DC	Adds a through hole. DC=Hole Dia. 1 mm Increment 10 ≤ DC ≤ 20 Ordering Code DC12

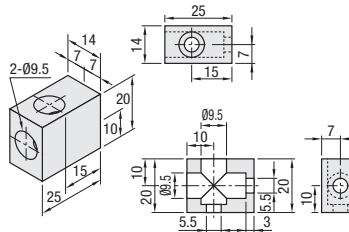
■ **Features:** The brackets do not protrude from extrusion widths when used to cross connect extrusions. Space-saving design compared to Tapped Reversal Brackets.

Block Brackets

HBLBL5



M Material : A6063
S Surface Treatment: Anodize



Part Number Type	Mass (g)	Applicable Screw Screw	Quantity	Allowable Load (N)	Unit Price 1-99 pc(s).	Volume Discount Rate 100-200
HBLBL5	13	CBM5-8	2	686		



Alterations



Part Number - (SET, SST, SEU, SSU, SEP, SSP)
HBLBL5 SET



Ordering Example Part Number
HBLBL5

Alterations	Code	Spec.	Applicable Bracket
Applicable Screws and Nuts Set	SET	Applicable screws and nuts for fixing the brackets on extrusions come in a set. (Adds to the bracket price.)	HBLBL5
	SST		
	SEU		
	SSU		
	SEP		
	SSP		

⚠ Included Screw is not RoHS compliant when -SET, -SEU or -SEP are specified.