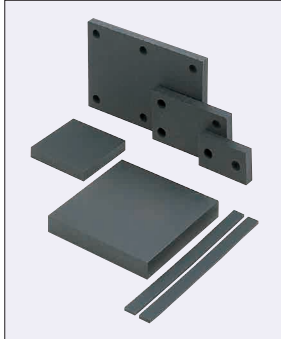


Low Elasticity Rubber Sheets

HANENITE®

HANENITE® excels in shock and vibration resistance and absorbs energy without rebound. Best suited for receivers for workpieces. For property details, see P.389

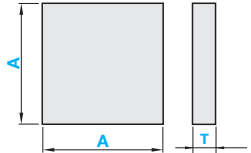


A Selectable Type		A, B Configurable Type		Material	Hardness	Color
No Adhesive	Adhesive	No Adhesive	Adhesive			
UNSE	UNSEA	UNSET	UNSETA	Low Elasticity Rubber (HANENITE® GP-35LE)	Shore A35	Black
UNLE	UNLEA	UNLET	UNLETA	Low Elasticity Rubber (HANENITE® GP-60LE)	Shore A53	Black

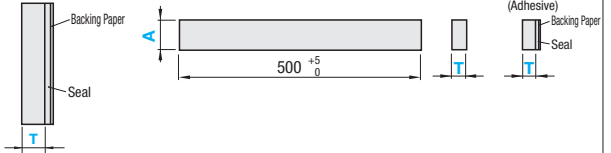
- HANENITE® is a registered trademark of Naigai Rubber Industry Co., Ltd.
- Adhesive thickness is 0.14 ~ 0.2mm.
- Has slightly more stickiness.

Accuracy Standards		
Tolerance	A, B Tolerance	
T	A, B	Tolerance
1~3	200 or Less	±0.5
5, 10	201~300	±1.0
15~30	301~500	±1.5

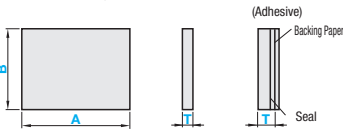
Square Type



Band Type



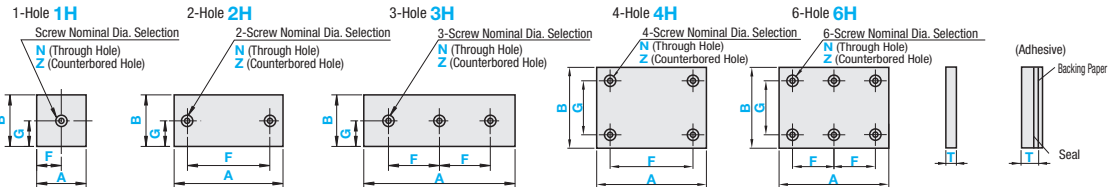
A, B Configurable - Standard Type



Hole Machining Details

Screw Nominal Dia.	Selection					
	3	4	5	6	8	10
d	3.5	4.5	5.5	6.5	9	12
d1	6.5	8	9.5	11	14	17.5
h	3.5	4.5	5.5	6.5	9	11

A, B Configurable - Hole Type



- For Adhesive Type T5 or more, the adhesive tape may tear from the body. Please use it as temporary fixing, or in combination with bolt fixing.
- A, B dimension tolerance has been changed. Please refer to the accuracy standards above.

Square Type

Part Number	Type	T	A Selection	
			No Adhesive	Adhesive
UNSE UNLE	UNSEA UNLEA	15	250	
		20		
		30		

Band Type

Part Number	Type	T	A Selection	
			No Adhesive	Adhesive
1	3	100		
2	5			
3	10			
5	20			
10	30			
10	40			
10	50	80		
10	80			

A, B Configurable - Standard Type

Part Number	Type	T	1mm Increment	
			A	B
UNSET UNLET		1	10~350	10~350
		2		
		3		
		5		
		10		
		15		
UNSETA UNLETA		20	10~250	10~250
		20		
		30		
		30		

L dimension is 500mm.

A ≥ B ≥ T

A, B Configurable - Hole Type

Part Number	Type	Nominal	T	1mm Increment (A ≥ B ≥ T)		0.5mm Increment		Screw Nominal Dia. Selection			
				A	B	F	G	N (Through Hole)	Z (Counterbored Hole)		
UNSET UNLET	1H	1	1	25~350	25~350	5~345 (1H Type)	5~345 (1H, 2H, 3H Types)	3	-		
			2								
			3								
	2H	3	4			9~341 (2H, 4H Types)	9~341 (4H, 6H Types)			4	-
			5								
			6								
3H	5	7	9~170 (3H, 6H Types)	5~245 (1H, 2H, 4H Types)	5	3 4					
		10									
		15									
4H	15	15	9~241 (1H, 2H, 4H Types)	9~241 (4H, 6H Types)	8	4 5 6 8					
		20									
		30									
6H	30	30	9~120 (3H, 6H Types)		10	4 5 6 8 10					

A ≥ B ≥ T

Dimension F Specification Range: For 1H, 2H, 3H: $d(d1)/2 + 2.5 ≤ F ≤ A - d(d1)/2 - 2.5$, for 2H, 4H: $d(d1) + 5 ≤ F ≤ A - d(d1) - 5$, for 3H, 6H: $d(d1) + 5 ≤ F ≤ A/2 - d(d1)/2 - 2.5$.

Dimension G Specification Range: For 1H, 2H, 3H: $d(d1)/2 + 2.5 ≤ G ≤ B - d(d1)/2 - 2.5$, for 4H, 6H: $d(d1) + 5 ≤ G ≤ B - d(d1) - 5$. (d for through holes, d1 for counterbored holes.)



Ordering Example

Part Number - A
UNSE10 - 100

A, B Configurable - Standard / Hole Type

Part Number - A - B - F - G - Screw Nominal Dia.
UNSET10 - 110 - 65
UNSET4H20 - 200 - 150 - F140 - G100 - Z5

