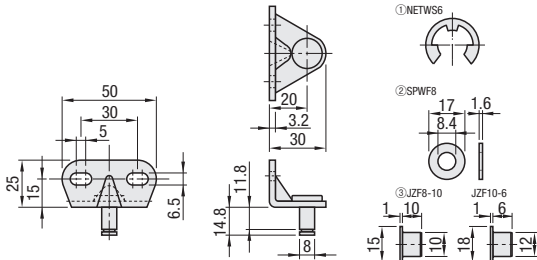


# Mounting Brackets for Gas Springs

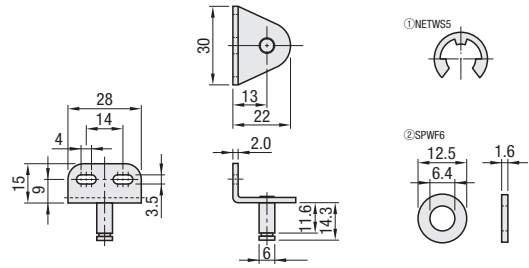


RoHS10

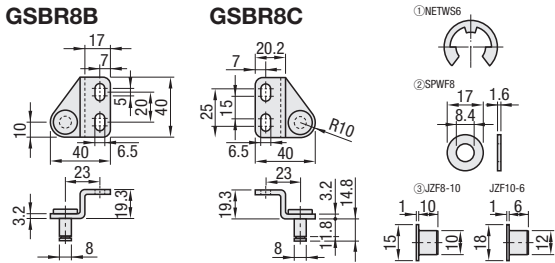
Part Number	M	S	A	Applicable Gas Spring
<b>GSBR8A</b>	SS400	Trivalent Chromate	① E Type Retaining Ring 1 pc. ② Washer 1 pc.	FGS22□□
<b>GSBR8A-S</b>		Black		① E Type Retaining Ring 1 pc. ③ PMA Bushing 1 pc. each



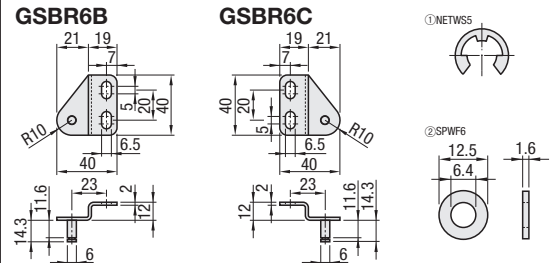
Part Number	M	S	A	Applicable Gas Spring
<b>GSBR6A</b>	SS400	Trivalent Chromate Black	① E Type Retaining Ring 1 pc. ② Washer 1 pc.	FGS15□□ FGS18□□



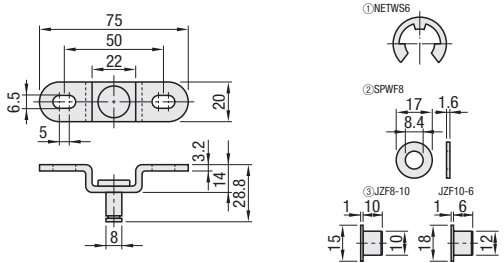
Part Number	M	S	A	Applicable Gas Spring
<b>GSBR8□</b>	SS400	Trivalent Chromate	① E Type Retaining Ring 1 pc. ② Washer 1 pc.	FGS22□□
<b>GSBR8□-S</b>		Black		① E Type Retaining Ring 1 pc. ③ PMA Bushing 1 pc. each



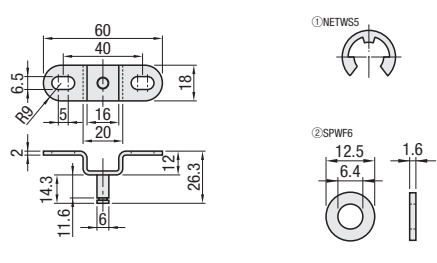
Part Number	M	S	A	Applicable Gas Spring
<b>GSBR6B</b>	SS400	Trivalent Chromate	① E Type Retaining Ring 1 pc. ② Washer 1 pc.	FGS15□□ FGS18□□
<b>GSBR6C</b>		Black		



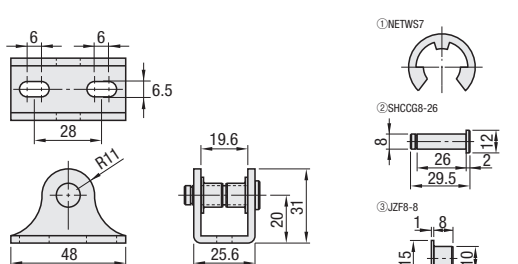
Part Number	M	S	A	Applicable Gas Spring
<b>GSBR8D</b>	SS400	Trivalent Chromate	① E Type Retaining Ring 1 pc. ② Washer 1 pc.	FGS22□□
<b>GSBR8D-S</b>		Black		① E Type Retaining Ring 1 pc. ③ PMA Bushing 1 pc. each



Part Number	M	S	A	Applicable Gas Spring
<b>GSBR6D</b>	SS400	Trivalent Chromate Black	① E Type Retaining Ring 1 pc. ② Washer 1 pc.	FGS15□□ FGS18□□



Part Number	M	S	A	Applicable Gas Spring
<b>GSBR8F-S</b>	SS400	Trivalent Chromate Black	① E Type Retaining Ring 1 pc. ② Precision Pin 1 pc. ③ PMA Bushing 2 pcs.	FGSS27□□



Part Number	Brackets for FGS	Mass (g)	Unit Price	Part Number	Brackets for FGSS	Mass (g)	Unit Price		
<b>GSBR</b>	<b>6A</b>	FGS15 FGS18	P.383	<b>GSBR</b>	<b>8A-S</b>	FGSS15 FGSS18 FGSS22	P.382	62	
	<b>6B</b>				49			<b>8B-S</b>	54
	<b>6C</b>				61			<b>8C-S</b>	67
	<b>6D</b>	FGS22	P.383		<b>8D-S</b>	FGSS27	67		
	<b>8A</b>				53				
	<b>8B</b>								
	<b>8C</b>								
	<b>8D</b>								

Ordering Example  
Part Number  
GSBR6A