

Shock Absorbers

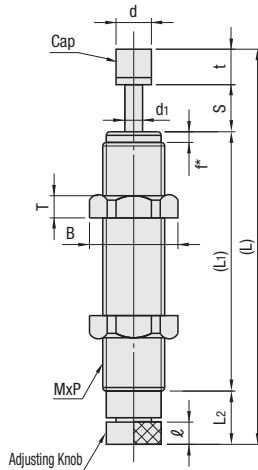
Water & Coolant Resistant Type

Shock Absorbers Water & Coolant Resistant Type

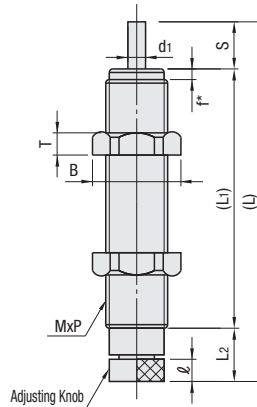


RoHS 10

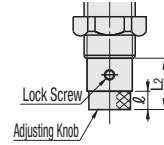
MACC (Cap)



MACS (No Cap)



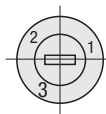
(No.1612, 2016 Shape of Adjustable Part)



(No.0806, 1008, 1210 Shape of Adjustable Part)



(Adjustable Part)



- ① f is the dimension of thread dia. M14 or smaller. M16 or larger is threaded to the tip.
- ② Avoid parallel use of Adjustable Type as synchronization of shock absorption characteristics is difficult.
- ③ Impact force can be easily adjusted by turning the adjusting knob on the bottom.
- ④ Operating Ambient Temperature: -5 ~ 70°C

No.	Material (Main Body)	Surface Treatment
0806	SUS303	-
1008, 1210, 1410, 1612	SUM	Electroless Nickel Plating
2016	STKM12C	-
Cap	Polycetal	-

Part Number		Thread Dia. MxP	Stroke S	Max. Absorbed Energy [E]		Max. Equivalent Mass (me)(kg)	Piston Rod Return Force (N)	Max. Drag Value (N)	(L)	(L1)	L2	ℓ	d	d1	t	f	B (Wrench Flats)	T	MACC		MACS		
Type	No.			Velocity	per Impact (J)														per Minute (J)	Unit Price	Volume Discount Rate	Unit Price	Volume Discount Rate
MACC (Cap)	0806	M	M8 x 0.75	6	1.4	36.7	15	9 or Less	670	64 (59)	47	6	3	6	2.5	5	2.3	12.7 (11)	2				
		L	M10 x 1.0	8	1.47	58.8	10	9 or Less	637	79.5 (73.2)	56.7	8.5	3.5	6	2.4	6.3	1.6	14.2 (13)	3				
		H	M12 x 1.0	10	2.94	98	30	13 or Less	1470	90.6 (82.6)	67.6	5	-	8	3.5	8	1.5	16.2 (14)	4				
MACS (No Cap)	1410	M	M14 x 1.5	10	3.92	147	30	14 or Less	1813	108.2 (98.2)	77.8	10.4	5	10	4	10	1.7	19.6 (17)	6				
		L	M16 x 1.5	12	5.88	235	4	20 or Less	2646	122.7 (107.7)	81.2	14.5	4.5	13.5	5	15	-	20 (19)	6				
		H	M20 x 1.5	16	29.4	343	300	33 or Less	3528	137 (120)	86	18	4	18	6	17	-	27.7 (24)	8				

① L Dimension values in () are for MACS Type.

kgf · m = Jx0.101972 kgf = Nx0.101972

Collision Velocity Type	Collision Velocity Range	Max. Operating Cycle
Low Speed L	0.3~1m/s	60cycle/min*
Medium Speed M	0.3~2m/s	
High Speed H	0.7~3m/s	

* For No.0806, max. operating cycle should be 45cycle/min.



Ordering Example

Part Number
MACC1008H