

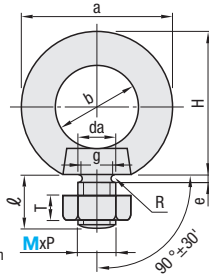
Lifting Eyebolts / Wing Hinge Screws

Lifting Eyebolts

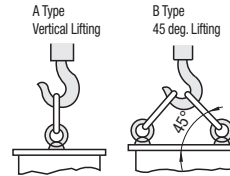
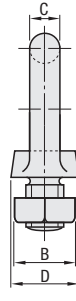


RoHS 10

CHIC
SCHI
(Stainless Steel)



Screw Precision
JIS1168



CHIC

M Material: SS400

S Surface Treatment: Trivalent Chromate Plating

A Accessory: Nut 1 pc.

SCHI

M Material: SUS304 (Electrolytic Polishing)

A Accessory: Nut 1 pc. (SUS304)

Part Number		MxP	a	b	C	D	H	l	e	g	R	da	Nuts		A Type N/1P(kgf/1P)	B Type N/2P(kgf/2P)	CHIC		SCHI	
Type	M												B	T			Unit Price	Volume Discount Rate	Unit Price	Volume Discount Rate
CHIC SCHI	8	8x1.25	32.6	20	6.3	16	33.3	15	3	6	1	9.2	13	6.5	785(80)	785(80)				
	10	10x1.5	41	25	8	20	41.5	18	4	7.7	1.2	11.2	17	8	1471(150)	1471(150)				
	12	12x1.75	50	30	10	25	51	22	5	9.4	1.4	14.2	19	10	2157(220)	2157(220)				
	16	16x2.0	60	35	12.5	30	60	27	5	13	1.6	18.2	24	13	4413(450)	4413(450)				
	20	20x2.5	72	40	16	35	71	30	6	16.4	2	22.4	30	16	6178(630)	6178(630)				



Ordering
Example

Part Number

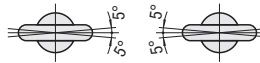
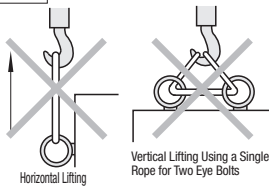
CHIC12



Caution

Bad Example Avoid the applications shown below.

When using a pair of eye bolts for lifting, mount them in alignment as shown.

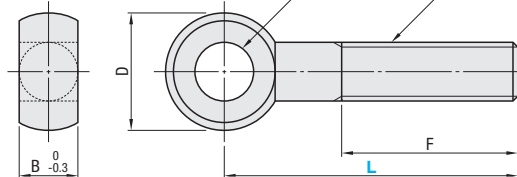


Wing Hinge Screws



RoHS 10

DNDN

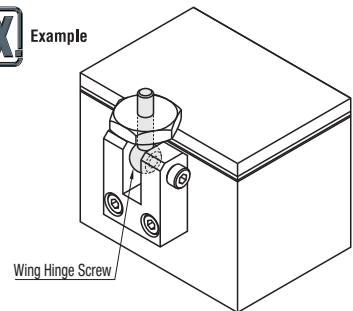


M Material: SUS304 Equivalent

Part Number		L	D	B	M	F	Unit Price 1 ~ 9 pc(s).	Volume Discount Rate 10 ~ 50 pcs.
Type	P							
DNDN	6	30	12	6	6	22		
		50				30		
	8	30	16	8	8	20		
		50				30		
		60				30		
	10	50	20	10	10	30		
		70				40		
		100				50		
	12	50	24	12	12	30		
		80				45		
		100				60		
	16	100	32	16	16	50		



Example



Wing Hinge Screw



Ordering
Example

Part Number

DNDN6

- L

- 30