

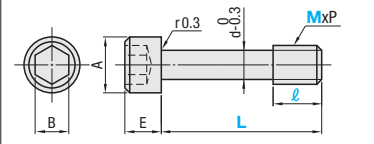
Note that, for some of the types shown here, order might be unable to be received by the MISUMI Thailand, Malaysia, Indonesia, and/or India offices.

Cover Screws

Available in Box



Type	Material	Strength Class
BOX-GUTB	SUS304 Equivalent	A2-70 Equivalent

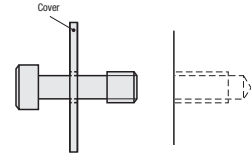


MxP (Coarse)	A	E	B	d
3x0.5	5.5	3	2.5	2.2
4x0.7	7	4	3	3
5x0.8	8.5	5	4	3.9
6x1.0	10	6	5	4.5
8x1.25	13	8	6	6.3

Box package is cost-saving for in-house stock or when large quantities are needed.

Part Number			Unit Price 1 to 10 boxes		Pcs./Box
Type	M	ℓ	Price per pkg.	1 Box	
BOX-GUTB (Stainless Steel)	3	4	10		200 pcs./box
			12		
			15		
			20		
	4	5	8		
			10		
			12		
			15		
	5	6	12		
			15		
			20		
			25		
6	8	20			
		25			
		30			
8	10	25			
		30			
			40		

The screw will not drop off from the cover when the cover is removed from the frame. (The cover requires tap machining to prevent screws from falling off.)



Available as a single item. (See below)

*The strength class signifies the screw's tensile strength.

(Ex) A2-70
This indicates that the minimum value of tensile strength is 700N/mm².
The steel class is A2 (Austenitic Stainless Steel)

Please specify in box quantity when ordering.
One box is shipped for an order of 1.



Ordering Example

Part Number

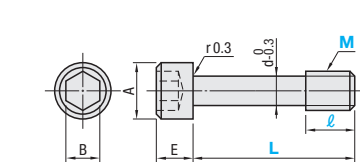
BOX-GUTB5-6-20

For orders larger than indicated quantity, please check with WOS.

Available in Single item

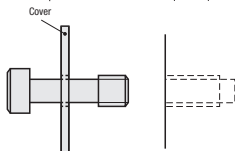
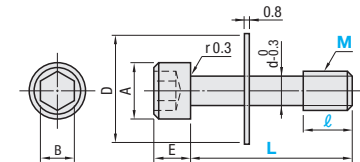


GUTB



M	A	E	B	d	D
2	3.8	2	1.5	1.5	-
2.6	4.5	2.5	2	1.8	-
3	5.5	3	2.5	2.2	7
4	7	4	3	3	10
5	8.5	5	4	3.9	12
6	10	6	5	4.5	12
8	13	8	6	6.3	14

GUTBN (With Nylon Washer)



The screw will not drop off from the cover when the cover is removed from the frame. (The cover requires tap machining to prevent screws from falling off.)

Strength Class: A2-70 Equivalent

Material: SUS304 Equivalent

Part Number	ℓ	L										GUTB	
		2	2.5	3	3.5	4	4	5	6	8	10	Unit Price	Volume Discount Rate
GUTB	2	2.5	4	6	8	10	12	15					
	2.6	3	6	8	10	12	15						
	3	2	4	6	8	10	12	15					
		3.5	6	8	10	12	15						
	4	4	8	10	12	15	20						
		3	6	8	10	12	15						
	5	5	10	12	15	20							
		3	8	10	12	15	20						
	6	6	12	15	20	25							
		4	8	10	12	15	20						
8	8	12	15	20	25	30							
	5	8	10	12	15	20							
	10	12	15	20	25	30	40						

Part Number	ℓ	L										GUTBN	
		2	3	3.5	4	4	5	6	8	10	Unit Price	Volume Discount Rate	
GUTBN	2	4	8	12	15								
	3	3.5	6	8	10	12	15						
		4	8	10	12	15	20						
	4	3	6	8	10	12	15						
		5	10	12	15	20							
	5	3	8	10	12	15	20						
		6	12	15	20	25							
	6	4	8	10	12	15	20						
		8	12	15	20	30							
	8	5	8	10	12	20							
10		15	20	30	40								



Ordering Example

Part Number	ℓ	L
GUTB5	6	12
GUTBN3	4	12



Alterations



Part Number	MC
GUTB5	MC5-LC10

Alteration	Code	Spec.																												
	MC	Thread length and L dimension can be specified in 1mm increments. Ordering Code: MC3-LC10																												
		<table border="1"> <thead> <tr> <th>M</th> <th>MC</th> <th>LC</th> <th>M</th> <th>MC</th> <th>LC</th> </tr> </thead> <tbody> <tr> <td>2</td> <td>2-6</td> <td>4-15</td> <td>5</td> <td>3-15</td> <td>8-25</td> </tr> <tr> <td>2.6</td> <td>2-8</td> <td>6-15</td> <td>6</td> <td>4-18</td> <td>8-30</td> </tr> <tr> <td>3</td> <td>2-9</td> <td>4-20</td> <td>8</td> <td>5-24</td> <td>8-40</td> </tr> <tr> <td>4</td> <td>3-12</td> <td>6-20</td> <td></td> <td></td> <td></td> </tr> </tbody> </table>	M	MC	LC	M	MC	LC	2	2-6	4-15	5	3-15	8-25	2.6	2-8	6-15	6	4-18	8-30	3	2-9	4-20	8	5-24	8-40	4	3-12	6-20	
M	MC	LC	M	MC	LC																									
2	2-6	4-15	5	3-15	8-25																									
2.6	2-8	6-15	6	4-18	8-30																									
3	2-9	4-20	8	5-24	8-40																									
4	3-12	6-20																												

LC-MC≥1