

For products uncovered by the e-Catalog Standard, see P.131.

Hex Posts - One End Tapped

Part Number Type	B	Unit Price				
		Min. L - 200	L200.5-400	L400.5-600	L600.5-800	L800.5-1000
Steel for General Structure NLMN	5	-	-	-	-	-
	6	-	-	-	-	-
	7	-	-	-	-	-
	8	-	-	-	-	-
	10	-	-	-	-	-
	12	-	-	-	-	-
	13	-	-	-	-	-
	14	-	-	-	-	-
	17	-	-	-	-	-
	19	-	-	-	-	-
	24	-	-	-	-	-
	27	-	-	-	-	-
30	-	-	-	-	-	
32	-	-	-	-	-	
Steel for General Structure Black Oxide LSMN	5	-	-	-	-	-
	6	-	-	-	-	-
	7	-	-	-	-	-
	8	-	-	-	-	-
	10	-	-	-	-	-
	12	-	-	-	-	-
	13	-	-	-	-	-
	14	-	-	-	-	-
	17	-	-	-	-	-
	19	-	-	-	-	-
	24	-	-	-	-	-
	27	-	-	-	-	-
30	-	-	-	-	-	
32	-	-	-	-	-	
Steel for General Structure Electroless Nickel Plating PLMN	5	-	-	-	-	-
	6	-	-	-	-	-
	7	-	-	-	-	-
	8	-	-	-	-	-
	10	-	-	-	-	-
	12	-	-	-	-	-
	13	-	-	-	-	-
	14	-	-	-	-	-
	17	-	-	-	-	-
	19	-	-	-	-	-
	24	-	-	-	-	-
	27	-	-	-	-	-
30	-	-	-	-	-	
32	-	-	-	-	-	
SUS304 SLMN	5	-	-	-	-	-
	6	-	-	-	-	-
	7	-	-	-	-	-
	8	-	-	-	-	-
	10	-	-	-	-	-
	12	-	-	-	-	-
	13	-	-	-	-	-
	14	-	-	-	-	-
	17	-	-	-	-	-
	19	-	-	-	-	-
	24	-	-	-	-	-
	27	-	-	-	-	-
30	-	-	-	-	-	
32	-	-	-	-	-	

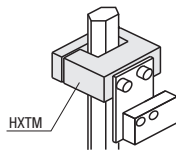
Hex Posts - One End Threaded

Part Number Type	B	Unit Price				
		Min. L - 200	L200.5-400	L400.5-600	L600.5-800	L800.5-1000
Steel for General Structure NLON	5	-	-	-	-	-
	6	-	-	-	-	-
	7	-	-	-	-	-
	8	-	-	-	-	-
	10	-	-	-	-	-
	12	-	-	-	-	-
	13	-	-	-	-	-
	14	-	-	-	-	-
	17	-	-	-	-	-
	19	-	-	-	-	-
	24	-	-	-	-	-
	27	-	-	-	-	-
30	-	-	-	-	-	
32	-	-	-	-	-	
Steel for General Structure Black Oxide LSON	5	-	-	-	-	-
	6	-	-	-	-	-
	7	-	-	-	-	-
	8	-	-	-	-	-
	10	-	-	-	-	-
	12	-	-	-	-	-
	13	-	-	-	-	-
	14	-	-	-	-	-
	17	-	-	-	-	-
	19	-	-	-	-	-
	24	-	-	-	-	-
	27	-	-	-	-	-
30	-	-	-	-	-	
32	-	-	-	-	-	
Steel for General Structure Electroless Nickel Plating PLON	5	-	-	-	-	-
	6	-	-	-	-	-
	7	-	-	-	-	-
	8	-	-	-	-	-
	10	-	-	-	-	-
	12	-	-	-	-	-
	13	-	-	-	-	-
	14	-	-	-	-	-
	17	-	-	-	-	-
	19	-	-	-	-	-
	24	-	-	-	-	-
	27	-	-	-	-	-
30	-	-	-	-	-	
32	-	-	-	-	-	
SUS304 SLON	5	-	-	-	-	-
	6	-	-	-	-	-
	7	-	-	-	-	-
	8	-	-	-	-	-
	10	-	-	-	-	-
	12	-	-	-	-	-
	13	-	-	-	-	-
	14	-	-	-	-	-
	17	-	-	-	-	-
	19	-	-	-	-	-
	24	-	-	-	-	-
	27	-	-	-	-	-
30	-	-	-	-	-	
32	-	-	-	-	-	

Attachment Blocks for Hex Posts

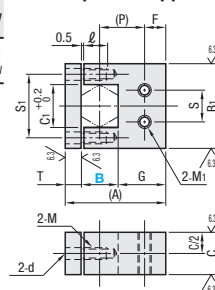


Type	M Material	S Surface Treatment	A Accessory
Top Side Tapped HXSM	SS400	Electroless Nickel Plating	Hex Socket Head Cap Screw
Side Tapped HXTM			

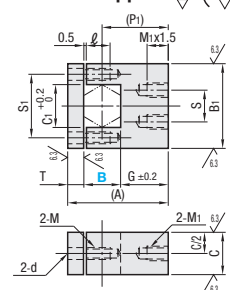


B dimension corresponds to B dim. of Hex Posts.

Top Side Tapped



Side Tapped



Part Number Type	B	(P)	(P1)	B1	C	F	G	C1	T	S1	d	M (Coarse)	l	S	M1 (Coarse)	(A)	Unit Price		Included Screw
																	HXSM	HXTM	
Top Side Tapped HXSM	10	11	16	25	12	5	11	11.5	6	18	3.5	M3	6	12	M4	27		SCB3-12, 2 pcs.	
	12	13	18		12		13.9	22											
	13			32	16		11.5	15.0		23		4.5	M4		9	M5	30.5		
Side Tapped HXTM	14	17	25		8	18	16.2	9	28	5.5	M5	11	16	M6	45.5		SCB5-20, 2 pcs.		
	17					19.5	19.6		24										
	19	20	28	38		22	18.5		21.9						29				46.5



Part Number
HXSM14