

Locating Pins - Large Flat Head

Tapped

Features: Large Flat Head with the shape designed to be mounted from back using bolts. Improved maintainability compared to Press Fit Type.



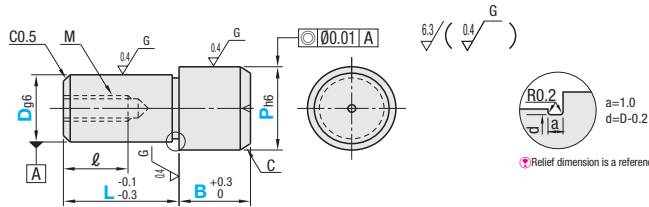
(Alteration CN)

Material No.	Material	Surface Treatment	Hardness	Type	
				P Selectable	P, L, B Configurable
(1)	SKS3 Equivalent	-	Treated Hardness: 60~63HRC	JPDTA	FPDTC
(2)	SKS3 Equivalent	Hard Chrome Plating	Treated Hardness: 50~53HRC Plating Hardness: 750HV _{0.05}	GJPDTA	GFPDTC
(3)	SKS3 Equivalent	-	-	-	BFPDTC
(4)	SUS304*	-	-	SJPDTA	SFPDTC
(6)	SUS440C or 13Cr stainless	-	Treated Hardness: 50~55HRC	CJPDTA	-

* For P Selectable Type, it is SUS304 equivalent.

P dim. Tolerance Table

P	h6
5.50-6.00	0 -0.008
6.01-10.00	0 -0.009
10.01-18.00	0 -0.011
18.01-30.00	0 -0.013



- Polished, centering hole is sometimes not available for SUS304.
- SUS440C or 13Cr stainless has an identification groove at any position on D part.

P Selectable

Part Number		P Selection	L	B	M (Coarse)	*Tightening Torque N·cm	ℓ	C
Type	D D dim. Tolerance g6							
JPDTA GJPDTA SJPDTA CJPDTA	6	8, 10	10	5	M3	98	5	1
	8	12	12	6	M5	461	8	1.5
	10	12, 14	16	10				2
	12	16	20	20				M8
	13	18	22	22				
	16	25	24	25				
	20	30	32	30				

P, L, B Configurable

Part Number		P	L	B	M (Coarse)	*Tightening Torque N·cm	ℓ	C
Type	D D dim. Tolerance g6							
FPDTC GFPDTC BFPDTC SFPDTC	5	5.50~8.00	5~10	1.5~15.0	M2	-	3	1
	6	6.50~10.00	6~12	1.5~15.0	M3	98	5	
	6T	-	-	-	M2.6	-	4	
	8	8.50~15.00	8~16	1.5~30.0	M5	461	8	1.5
	8T	-	6~16	-	M4	225	6	
	10	11.00~17.00	10~20	3.0~30.0	M5	461	8	2
	10T	-	6~16	-	M4	225	6	
	12	13.00~18.00	12~24	3.0~30.0	M5	461	8	
	12T	-	8~18	-	M4	225	6	3
	13	14.00~20.00	13~26	5.0~30.0	M8	1911	12	
	13T	-	8~20	-	M6	784	9	
	16	17.00~27.00	16~32	5.0~35.0	M8	1911	12	3
	16T	-	10~24	-	M6	784	9	
	20	22.00~30.00	20~40	5.0~40.0	M8	1911	12	
	20T	-	12~30	-	M6	784	9	

① Pins of D dimension with T have one size smaller thread diameter and larger wall thickness. (Actual D dimension is the number without "T".)
 ② Note the strength of under-head part. **P1618** ③ Please confirm pilot hole depth on **P1618**. Holes may go through.
 * The tightening torque (ref. value) for hardened products is strength class 8.8. (See technical data on **P2365**.) Not applicable when using locking materials or lock washers.



Ordering
Example

Part Number	P	L	B
JPDTA10	- 14	-	-
FPDTC12T	- P14.25	- L18	- B8.6