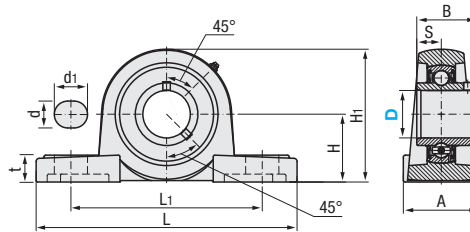


Similar Products Comparison Points | Products designed for light load, intermediate and low rotation speed, and medium rotational accuracy applications. See P.1015 for the description of C-VALUE Products.



C-PDR (Pillow Blocks)



Bearing Inner Diameter Tolerance : H7 (Clearance Fit)
Operating Temperature : -25 ~ +60°C
Grease Fitting Nominal Dia. : 1/4-28UNF (Unified Standards)

Component	Material
(1) Housing	HP200
(2) Bearing	GCR15
(3) Rubber Seal	Nitrile Rubber (NBR)
(4) Set Screw	S45C

Part Number		JIS Nominal	H	L	L ₁	A	d ₁	d	t	H ₁	B	S	Basic Load Rating (kN)		Set Screw		Mass (g)	Unit Price	
Type	D												C _r (Dynamic)	C _{or} (Static)	M ₁	Tightening Torque (N·cm)			Axial Load Capacity (N)
C-PDR	20	UCP204	33.3	127	96	38	19	13	15	65	31	12.7	12.8	6.6	M6x1	400	1280	700	
	25	UCP205	36.5	140	105		16		16	71	34.1	14.3	14	7.9			1400	800	
	30	UCP206	42.9	165	121	48	21	17	17	83	38.1	15.9	19.5	11.3	M8x1	850	1960	1300	
	35	UCP207	47.6	167	126				18	93	42.9	17.5	25.7	15.3			2590	1600	
	40	UCP208	49.2	184	136				18	100	49.2	19	29.1	17.9			2930	1900	

kgf=Nx0.101972



Ordering Example

Part Number

C-PDR20