

Note that, for some of the types shown here, order might be unable to be received by the MISUMI Indonesia offices.



Rolled Ball Screws Standard Nut - Shaft Dia. 8; Lead 2

Accuracy Grade C7, C10

Points of comparison against similar products

For Load Rating and Nut dim., C-VALUE components are different from the similar products. (For details, see P.729-P.730.)
When considering adopting C-VALUE parts, select them by comparing against similar products in the specifications.



RoHS 10

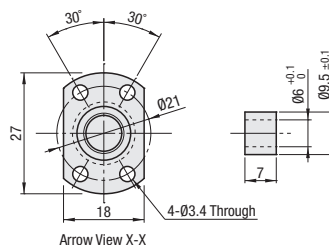
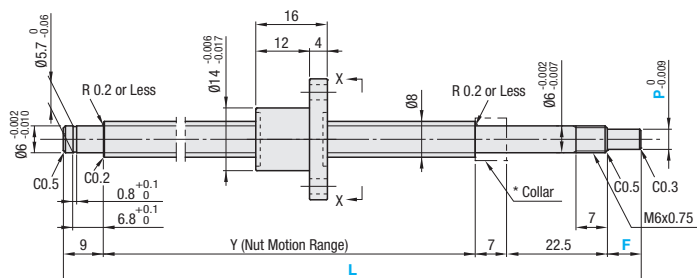
Nut Type	Type		Accuracy Grade	Shaft Dia.	Lead	Screw Shaft			Nut		
	Standard	F, P Configurable				M Material	H Hardness	S Surface Treatment	M Material	H Hardness	S Surface Treatment
Standard Nut	C-BSST	C-BSSTK	C7	8	2	S55C	Induction Hardened 58 ~ 62HRC	-	SCM415	Carburized 58~62HRC	-
	C-BSSC	C-BSSCK	C10								

* Included Collar (1 pc.)

M Material : S45C

S Surface Treatment : Black Oxide

C-BSST(K), C-BSSC(K)0802



Nut Type	Accuracy Grade	Part Number		1mm Increment			Y	Ball Dia.	Ball Center Dia.	Screw Root Dia.	Number of Circuits	Basic Load Rating		Axial Play	Twisting Direction	
		Type	Screw Shaft O.D.	Lead	L	*F						*P	C (Dynamic) kN			Co (Static) kN
Standard Nut	C7	C-BSST	8	2	100~400	7.5	4.5	L-46	1.2	8.41	(7.21)	1 turn, 3 rows	1.2	2.1	0.05 or Less	Right
		C-BSSTK				8~13	4, 4.5	L-(38.5+F)								
	C10	C-BSSC				7.5	4.5	L-46								
		C-BSSCK				8~13	4, 4.5	L-(38.5+F)								

* F and P are configurable for C-BSSTK, C-BSSCK only. $F \leq P \times 3$ Y (Nut Motion Range) > (Nut Overall Length) $kgf = N \times 0.101972$

Nut Type	Accuracy Grade	Part Number	Unit Price 1 ~ 4 pc(s).	
			L100~200	L201~400
Standard Nut	C7	C-BSST0802		
	C10	C-BSSC0802		

For the price of F, P Configurable Type, add the relevant surcharge to the standard type price.



Ordering Example
Part Number - **L** - **F** - **P**
 C-BSSC0802 - 200
 C-BSSCK0802 - 200 - F5 - P4