



Miniature Linear Guides

Standard Blocks, Light Preload / Slight Clearance

Points of comparison against similar products | The most basic type among all the industry standard specifications. Select from Light Preload Types with superior precision and rigidity.

Industry Standard



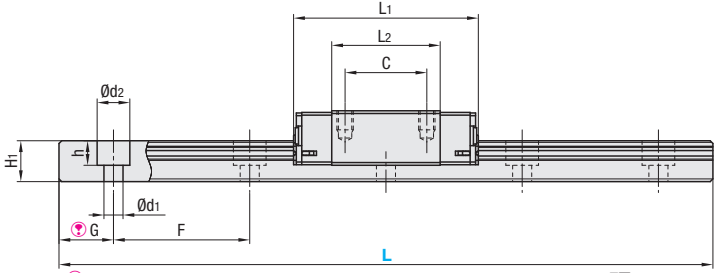
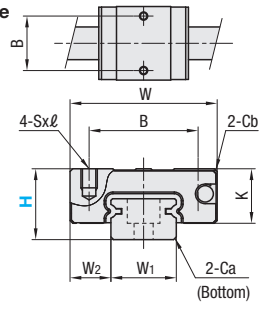
Material Hardness	Type			MX (Lubrication Unit)	L Dimension	Number of Blocks
	Light Preload		Slight Clearance			
	High Grade	Precision Grade	Standard Grade			
Stainless Steel 56HRC~	SSEB	SSEBV	SSEBZ	Blank: None -MX: Provided	Selectable Configurable Ⓢ	1
	SSE2B	SSE2BV	SSE2BZ			2
	SSEBL	SSEBLV	SSEBLZ			1
	SSE2BL	SSE2BLV	SSE2BLZ			2

Heat Resistant Temperature: -20 ~ 80°C
 ⓈH6 has no standard grade / precision grade. Ⓢ For L Dimension Configurable Type, any L dim. on the Price List is not available.
 SSEBL8-56 (Configurable): ○
 SSEBL8-55 (Configurable): × Ⓢ Place order for SSEB8-55 (Selectable)

- Ⓢ This Type has the same fitting dimensions as the other company products, and thus, can be substituted for them.
- Ⓢ Blocks and rails are not sold as separate items. This Type has guaranteed radial clearances and accuracies as sets of blocks and rails.

RoHS 10

H6 Type



Ⓢ For L Configurable Type, G dimensions differ from those shown in the table below. For details, see P553.

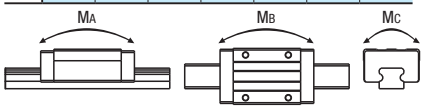
- Precautions for Use
 - Ⓢ Blocks are equipped with retainers (wire) to prevent balls from derailing. For how to handle the blocks, see P547.
 - Ⓢ Radial clearances and accuracies are not guaranteed if the blocks and rails are interchanged from the original set combinations.
 - Ⓢ Straight grooves are provided on datum planes. Be sure to match the datum lines when using.
 - Ⓢ Rails cannot be connected end to end.
 - Ⓢ The accuracy of Linear Guides is guaranteed after securing the rail (after fastening screws on the rail and pushing it onto the datum plane).
 - Minor bending of the rail will be adjusted after being secured and will not affect the performance.
- Accessory
 - Ⓢ H6 comes with Number 0, Class 1 Phillips button head screws (M2x6).
 - Ⓢ H8 comes with cap screws (M2x6).
- Others
 - Ⓢ Filled with Lithium soap based grease (Multemp Grease PS2 by Kyodo Yushi Co., Ltd.).
 - Ⓢ For Operating Life Calculation, see P549.
 - Ⓢ For operating life calculations, use our free calculation software from http://download.misumi.jp/mol/fa_soft.html.
 - Ⓢ The MX type is greased with a lithium complex grease (TOUGHLIX GREASE MP2, made by JXTG Nippon Oil & Energy Corporation).

Part Number	Type	MX	H	L	Block Dimension						Guide Rail Dimension								
					W	L1	B	C	Sxℓ	L2	K	Cb	W1	W2	H1	Ca	Counterbored Hole d1xd2xh	F	G
SSEB SSEBV SSEBZ SSE2B SSE2BV SSE2BZ SSEBL SSEBLV SSEBLZ SSE2BL SSE2BLV SSE2BLZ	Blank: None -MX: Provided		6	25-100 (70)	12	17.4	8	-	M2x1.5	9.7	4.5	0.3	5	3.5	4	0.3	2.4x3.5x1	15	5
			8	40-265 (70)	17	23.6	12	8	M2x2.5	13.6	6.5	0.3	7	5	4.7	0.3	2.4x4.2x2.3	15	5
			10	35-355 (75)	20	30	15	10	M3x3	19	7.8	0.3	9	5.5	5.5	0.3	3.5x6x3.5	20	7.5
			13	45-720 (95)	27	33.9	20	15	M3x3.5	19.9	10	0.5	12	7.5	7.5	0.5	3.5x6x4.5	25	10
			16	70-670 (110)	32	42.4	25	20	M3x4	27.4	12	0.5	15	8.5	9.5	0.5	3.5x6x4.5	40	15
			20	100-700 (160)	40	50	30	25	M4x6	34.6	15	0.5	20	10	11	0.5	6x9.5x5.5	60	20

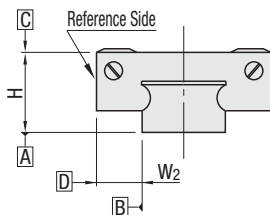
Ⓢ Dimensions in () are for 2-Block Type.
 Ⓢ Both ends of the rail are evenly cut for L Dimension Configurable Type. G dim. resulting from this cutting process will become other than indicated on the above table. For details about how to calculate the applicable G dim., see P553.
 Ⓢ H8 145 to 265, H10 295 to 355 and H13 495 to 720 are applicable to High Grade Type only. See the price list on the right page.

kgf~Nx0.101972

H	Basic Load Rating		Allowable Static Moment			Mass	
	C (Dynamic) kN	Co (Static) kN	MA N·m	Mb N·m	Mc N·m	Block kg	Guide Rail kg/m
6	0.3	0.6	0.8	0.8	1.5	0.004	0.13
8	0.9	1.5	4.1	4.1	5.2	0.01	0.19
10	1.5	2.5	5.1	5.1	10.2	0.02	0.31
13	2.2	3.3	8.8	9.5	16.1	0.04	0.61
16	3.6	5.4	21.6	23.4	39.6	0.06	1.02
20	5.2	8.5	48.4	48.4	86.4	0.12	1.65



Preload and Accuracy Standards

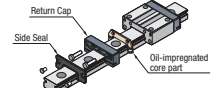


Unit : μm

Specifications	Light Preload, High Grade	Light Preload, Precision Grade	Slight Clearance, Standard Grade
Radial Clearance	-3~0	0~+15	0~+15
Height H Tolerance	±20	±10	±20
Pair Variation of Height H	15	7	40
Width W2 Tolerance	±25	±15	±25
Pair Variation of Width W2	20	10	40
Running Parallelism of Plane C against Plane A	See P547.		
Running Parallelism of Plane D against Plane B	See P547.		

Ⓢ Slight Clearance Type has clearance (Gap) between rails and blocks. If precision / rigidity is required, select Light Preload Type.

Lubrication Unit MX



The same block size as existing products!

The oil-impregnated porous core part has been built into the product.

- Advantages of the Lubrication Unit MX:
 - Provides long-term maintenance-free operation.
 - Reduces maintenance costs.