

# Rotary Connectors

## Round Flanged / Compact Flanged

■ **Features:** Touch panels and boxes can be freely rotated.

### Round Flanged



RoHS 10

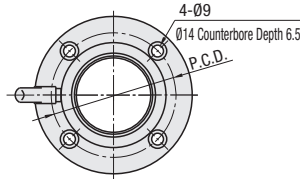
### Compact Flanged



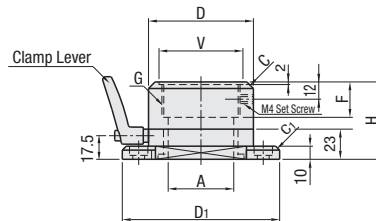
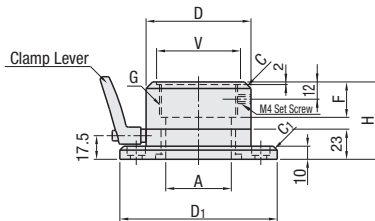
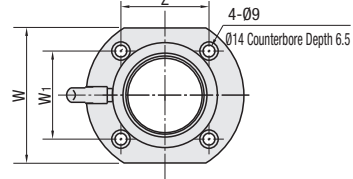
RoHS 10

| Type          |                 | M                 | S                          | A           |           |          |
|---------------|-----------------|-------------------|----------------------------|-------------|-----------|----------|
| Round Flanged | Compact Flanged | Material          | Surface Treatment          | Clamp Lever | Screw     | Nut      |
| ROCN          | WROCN           | SS400             | Electroless Nickel Plating | CLMD        | CB8-20x4  | LBNR8x4  |
| ROCK          | WROCK           | SS400             | Black Oxide                | CLMD        | CB8-20x4  | LBNR8x4  |
| ROCSH         | WROCS           | SUS304 Equivalent | -                          | CLMS        | SCB8-20x4 | SLBNR8x4 |

Round Flanged



Compact Flanged



- ⚠ Structure with inner stopper prevents 360 rotation to prevent wiring from being twisted.
- ⚠ Avoid giving excessive impact to the internal stopper when rotating, otherwise, it may cause damages.

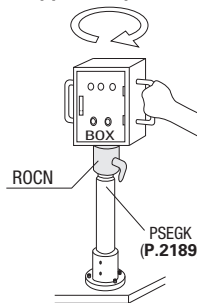
| Part Number | Type            | Nominal | A  | D   | D <sub>1</sub> | G (PF) | F  | H  | C | V   | P.C.D. | C <sub>1</sub> | W   | W <sub>1</sub> | Z  | Applicable Tube | *Reference Values  |                    |
|-------------|-----------------|---------|----|-----|----------------|--------|----|----|---|-----|--------|----------------|-----|----------------|----|-----------------|--------------------|--------------------|
|             |                 |         |    |     |                |        |    |    |   |     |        |                |     |                |    |                 | X <sub>1</sub> (N) | X <sub>2</sub> (N) |
| 28          | Round Flanged   | 28      | 20 | 50  | 85             | G1     | 23 | 55 | 3 | 35  | 65     | 1.5            | 52  | 34             | 56 | G28             | 16.4               | 23.5               |
| 36          | ROCN            | 36      | 28 | 60  | 95             | G1 1/4 | 26 | 58 |   | 45  | 75     |                | 62  | 44             | 62 | G36             | 17.2               | 24.8               |
| 42          | ROCK            | 42      | 33 | 65  | 100            | G1 1/2 |    |    |   | 50  | 80     |                | 67  | 49             | 64 | G42             | 18.4               | 30.3               |
| 54          | ROCSH           | 54      | 48 | 80  | 120            | G2     | 27 | 59 | 5 | 64  | 95     | 3              | 82  | 64             | 72 | G54             | 19.6               | 32.3               |
| 70          | Compact Flanged | 70      | 62 | 96  | 138            | G2 1/2 | 32 | 63 |   | 78  | 112    |                | 98  | 76             | 82 | G70             | 20.8               | 33.4               |
| 82          | WROCN           | 82      | 72 | 106 | 148            | G3     |    |    |   | 90  | 122    |                | 108 | 86             | 88 | G82             | 22                 | 34.1               |
| 92          | WROCK           | 92      | 85 | 118 | 160            | G3 1/2 | 37 | 68 |   | 103 | 134    |                | 120 | 94             | 96 | G92             | 23.2               | 36.7               |

- ⚠ Take note that the applicable hollow tubes are based on JIS C 8305 Rigid Steel Conduits, but the thread section will be JIS B 0202 Parallel Threads for Tubes. (Threads for electrical conduits will not fit.)
- ⚠ \* Please note the the reference values are not guaranteed.

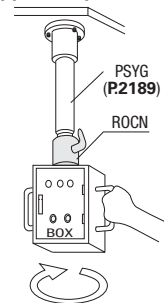
Ordering Example **Part Number**  
ROCN42



App. Example 1



App. Example 2



- \* Assume BOX load is 50kg.
- \* As shown in App. Example 1, X<sub>1</sub>(N) is the force needed to turn the handle.
- \* As shown in App. Example 2, X<sub>2</sub>(N) is the force needed to turn the handle.

| Nominal | Unit Price    |      |       |                 |       |       |
|---------|---------------|------|-------|-----------------|-------|-------|
|         | Round Flanged |      |       | Compact Flanged |       |       |
|         | ROCN          | ROCK | ROCSH | WROCN           | WROCK | WROCS |
| 28      |               |      | -     |                 |       | -     |
| 36      |               |      | -     |                 |       | -     |
| 42      |               |      | -     |                 |       | -     |
| 54      |               |      | -     |                 |       | -     |
| 70      |               |      | -     |                 |       | -     |
| 82      |               |      | -     |                 |       | -     |
| 92      |               |      | -     |                 |       | -     |