

Flexible Clamps / Holder Pipes

■ **Features:** A circular post and a hex post can be clamped together.

Flexible Clamps



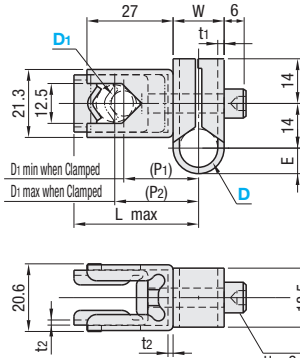
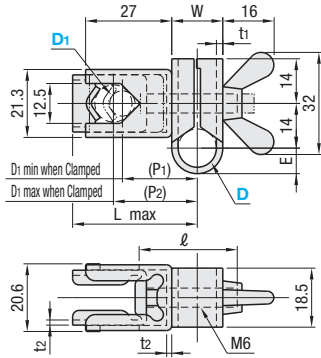
RoHS10

Type			Material	Surface Treatment
Wing Nut	Hex Socket Head Cap Screw	Wing Nut High Torque		
FLEC	FLEB	FLHC	SPHC	Electroless Nickel Plating
FLES	FLEBS	-	SUS304	-

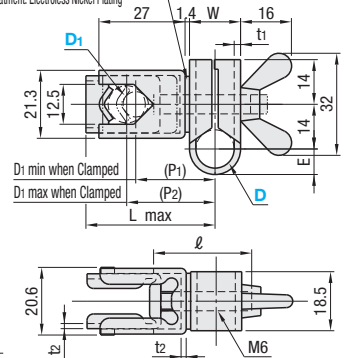
Wing Nut

Hex Socket Head Cap Screw

Wing Nut High Torque



Toothed Washer
Material: SK5
Surface Treatment: Electroless Nickel Plating



Part Number	Type	D	D1		W	E	P1(min)	P2(max)	Lmax	ℓ	t1	t2		Unit Price				
			Nominal	Clamping Range								SPHC	SUS304	FLEC	FLES	FLEB	FLEBS	FLHC
Wing Nut FLEC FLES	Hex Socket Head Cap Screw	12	8	08~12	16	8	(23.5)	(26.3)	39.1	30	2	1.6	1.5	-	-	-	-	-
		15	8	08~12	19	9.5	(25.0)	(27.8)	40.6	35				-	-	-	-	-
Wing Nut High Torque FLHC	Wing Nut High Torque	12	8	08~12	16	8	(24.9)	(27.7)	40.5	30	2	1.6	1.5	-	-	-	-	-
		15	8	08~12	19	9.5	(26.4)	(29.2)	42	35				-	-	-	-	-

⚠ Do not tighten the wing nut and the hex socket head cap screw unless the shaft is set in D part. Excessive tightening can cause deformation.

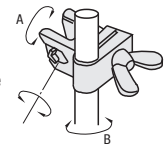
⚠ Recommended Diameter Tolerances of Mating Posts: ±0.05 for Wing Nuts; $^{+0.05}_{-0.1}$ for Hex Socket Head Cap Screws.



Ordering Example
Part Number - D1
FLEC12 - 8

Features:

- Two axes can be clamped by tightening one wing nut.
- Flexible clamping is possible as shown in the right figure.



<Reference> Moment Capacity Data

Sample	Tightening Conditions	Standard				High Torque	
		SPHC		SUS		SPHC	
Data		FLEC12-8 FLEB	FLEC15-8 FLEB	FLES12-8 FLEBS	FLES15-8 FLEBS	FLHC12-8	FLHC15-8
A (Ncm)	1	102.9	235.2	132.3	161.7	232.3	313.1
	2	220.5	470.4	249.9	294.0	429.2	502.7
B (Ncm)	1	205.8	1176 or More	176.4	1176 or More	285.2	1176 or More
	2	294.0	1176 or More	367.5	1176 or More	352.8	1176 or More

⚠ The above data is an example of actual measurements and not guaranteed.

⚠ A and B correspond with A and B in the above figure.

⚠ The data show the results of tightening with Hex Nuts instead of Wing Nuts. The posts are S45C polished material.

Tightening Condition 1: Tightening Torque 100Ncm

Tightening Condition 2: Tightening Torque 200Ncm

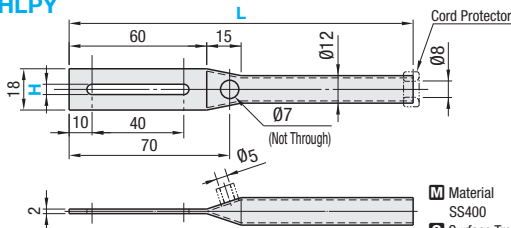
■ **Features:** Can be used as holders for opto-electric sensors and proximity sensors.

Holder Pipes



RoHS10

HLPY



⚠ A cable protector is included.

Part Number	Type	H	L		Unit Price	
			L150	L250	L150	L250
HLPY		4.5	150	250		
		5.5				



Ordering Example
Part Number - L
HLPY4.5 - 150

