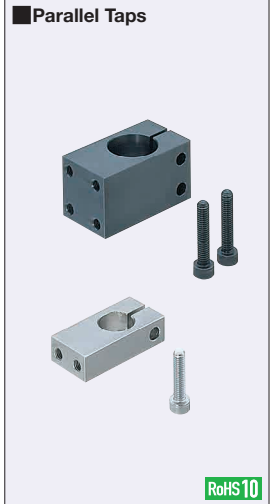


# Strut Clamps

## Parallel Taps

■ **Features:** Clamp type of mounting a device parallel to post.

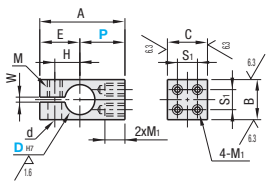


Type				Material	Surface Treatment	Accessory
Pitch Selectable		Pitch Configurable				
Standard	Thin	Standard	Thin			
<b>KQM</b>	<b>KQMU</b>	<b>KQL</b>	<b>KQLU</b>	Steel for General Structure	Black Oxide	Hex Socket Head Cap Screw
<b>MQM</b>	<b>MQMU</b>	<b>MQL</b>	<b>MQLU</b>		Electroless Nickel Plating	Hex Socket Head Cap Screw (Stainless Steel)
<b>AQM</b>	<b>AQMU</b>	<b>AQL</b>	-		Black Anodize	Hex Socket Head Cap Screw
<b>WQM</b>	<b>WQMU</b>	-	-	Aluminum Alloy	Clear Anodize	Hex Socket Head Cap Screw (Stainless Steel)
<b>SQM</b>	<b>SQMU</b>	<b>SQL</b>	<b>SQLU</b>		SUS304	-

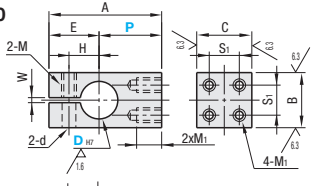
⚠ CB screws are included with the black oxide and black anodized products, and SCB screws are included with the other products.

$$6.3 / \left( \sqrt[3]{6.3 / 1.6} \right)$$

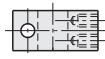
D=8~12



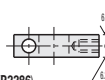
D=15~50



Standard



Thin



· P Dimension Tolerance: JIS B 0405 Medium Class (P2286)

### Pitch Selectable

Part Number		DH7	P	A	B	C	C1	E	H	S1	M1	S	W	M	d		
Type	Thin																
Standard <b>KQM</b> <b>MQM</b> <b>AQM</b> <b>WQM</b> <b>SQM</b> (D≤30)	Thin <b>KQMU</b> <b>MQMU</b> <b>AQMU</b> <b>WQMU</b> <b>SQMU</b> (D≤30)	8	+0.015	15	29	12	12	-	14	8	6	M3	-	2	M5	5.5	
		10	0	16	31	16	16	9	15	9	8	M4	-				
		12	+0.018	18	34	-	-	-	16	10	-	-	-	-	-	-	-
		15	0	25	45	22	22	12	20	12	12	M5	12	-	-	-	-
		20	+0.021	30	52	28	28	16	22	15	16	M6	14	16	-	M6	6.6
		25	0	33	58	32	32	19	25	18	20	-	-	-	-	-	-
		30	+0.025	37	66	40	40	-	29	21	25	M8	20	-	-	M8	9
		35	0	40	72	45	45	22	32	24	28	-	-	-	-	-	-
		40	+0.025	45	79	50	50	25	34	26	30	M8	20	2	2	M8	9
		50	0	60	103	65	65	32	43	33	38	M10	32	3	3	M10	11

⚠ For the available sizes, refer to the price list. ⚠ D=16 is only applicable to Standard Pitch (except Clear Anodize). ⚠ DH7 tolerance is before the slit machining.

⚠ For mating, g6, f8 shaft tolerances are recommended. Tightening with a long wrench is recommended.

### Pitch Configurable

Part Number		DH7	P Selection		A	B	C	C1	E	H	S1	M1	S	W	M	d					
Type	Thin																				
Standard <b>KQL</b> <b>MQL</b> <b>AQL</b> <b>SQL</b> (D≤30)	Thin <b>KQLU</b> <b>MQLU</b> <b>AQLU</b> <b>SQLU</b> (D=20)	10	+0.015	20	30	A=P+E	16	16	9	15	9	8	M4	-	2	M5	5.5				
		12	+0.018	25	35					16	10			-				-			
		15	0	30	40					22	12	12	12	M5	12	-	-	-	-	-	-
		20	+0.021	25	40					28	16	22	15	16	M6	14	16	-	-	-	-
		25	0	40	50					32	19	25	18	20	-	-	-	-	-	-	-
		30	+0.025	50	60					40	40	29	21	25	M8	20	-	-	-	M8	9
		35	0	45	45					22	32	24	28	-	-	-	-	-	-	-	-
		40	+0.025	50	60					50	50	25	34	26	30	M8	20	2	2	M8	9
		50	0	65	70					65	65	32	43	33	38	M10	32	3	3	M10	11

⚠ For the available sizes, refer to the price list. ⚠ DH7 tolerance is before the slit machining. ⚠ For mating, g6, f8 shaft tolerances are recommended. Tightening with a long wrench is recommended.



Ordering Example

Part Number	-	P
<b>MQM12</b>	-	
<b>KQLU25</b>	-	40

D	Unit Price																
	Pitch Selectable										Pitch Configurable						
	Standard					Thin					Standard		Thin				
	KQM	MQM	AQM	WQM	SQM	KQMU	MQMU	AQMU	WQMU	SQMU	KQL	MQL	AQL	SQL	KQLU	MQLU	SQLU
8																	
10																	
12																	
15																	
16																	
20																	
25																	
30																	
35																	
40																	
50																	

### Included Screw

D	Included Screw (Thin Type has 1 screw on each side.)
8	M5-12, 1 pc.
10	M5-15, 1 pc.
12	M5-15, 1 pc.
15	M5-20, 2 pcs.
16	M5-20, 2 pcs.
20	M6-25, 2 pcs.
25	M6-30, 2 pcs.
30	M8-35, 2 pcs.
35	M8-40, 2 pcs.
40	M8-45, 2 pcs.
50	M10-55, 2 pcs.