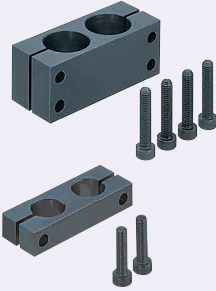


Strut Clamps

Equal/Unequal Dia., Parallel Holes, Pitch Selectable

■ **Features:** Two Posts for Stands fixable in parallel.

■ **Equal Dia., Parallel Holes, Pitch Selectable**



RoHS10

Type		Material	Surface Treatment	Accessory
Standard	Thin			
KKP	KKPT	SS400	Black Oxide	Hex Socket Head Cap Screw
MKP	-		Electroless Nickel Plating	Hex Socket Head Cap Screw (Stainless Steel)
AKP	-	A6063	Black Anodize	Hex Socket Head Cap Screw
SKP	-	SUS304	-	Hex Socket Head Cap Screw (Stainless Steel)

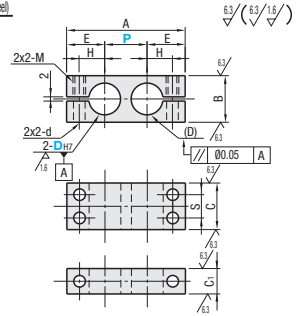
D=8-12

D=15-35

Standard

Thin

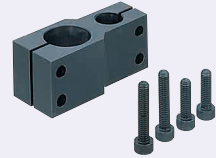
* P Dimension Tolerance: JIS B 0405 Medium Class (P2286)



Part Number		D _{H7}	P Selection							A	B	C	C ₁	E	H	S	M	d	
Type	Thin		10	15	20	25	30	40	50										75
Standard KKP MKP AKP SKP	Thin KKPT	8	+0.015 0	10 15 20 25							A=P+(2xE)	12	12	-	14	8	-	M5	5.5
		10	+0.018 0	15 20 25 30								16	16	9	15	9	-		
		12	+0.018 0	20 25 30 40								22	22	12	18	12	11		
		15	+0.021 0	25 30 40 50								28	28	16	22	15	14	M6	6.6
		20	+0.021 0	30 40 50 75								32	32	19	25	18	16		
		25	+0.025 0	50 75 100 150								40	40	22	29	21	20	M8	9
		30	+0.025 0									45	45	22	32	24	24		
35	+0.025 0																		

⚠ For the available sizes, refer to the price list. ⚠ The tolerance and parallelism of D_{H7} are the tolerances before slitting. ⚠ For mating, g6, f8 shaft tolerances are recommended. Tightening with a long wrench is recommended.

■ **Unequal Dia., Parallel Holes, Pitch Selectable**



RoHS10

Type		Material	Surface Treatment	Accessory
Standard	Thin			
KKQ	KKQT	SS400	Black Oxide	Hex Socket Head Cap Screw

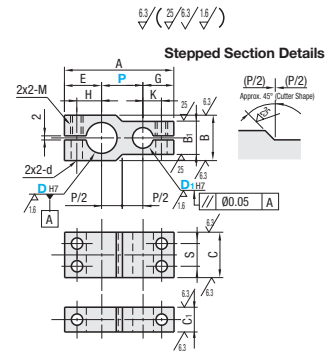
D=10, 12

D=15-35

Standard

Thin

* P Dimension Tolerance: JIS B 0405 Medium Class (P2286)



Part Number		D _{H7}	P Selection							A	B	B ₁	C	C ₁	E	G	H	K	S	M	d	
Type	Thin		8	10	15	20	25	30	40													50
Standard KKQ	Thin KKQT	10	+0.015 0	15 20 25							A=P+E+G	16	12	16	9	15	14	9	8	-	M5	5.5
		12	+0.018 0	15 20 25 30								16	14	16	9	16	15	10	9	-		
		15	+0.021 0	20 25 30 40								22	16	22	12	18	15	12	9	11		
		20	+0.021 0	25 30 40 50								28	22	28	16	22	19	15	12	14	M6	6.6
		25	+0.021 0	30 40 50 75								32	22	32	19	25	19	18	12	16		
		30	+0.025 0	50 75 100 150								40	28	40	19	29	23	21	15	20	M8	9
		35	+0.025 0									45	32	45	22	32	25	24	18	24		

⚠ The tolerance and parallelism of D_{H7} and D_{H7} are the tolerances before slitting. ⚠ For the available sizes, refer to the price list. ⚠ For mating, g6, f8 shaft tolerances are recommended. Tightening with a long wrench is recommended.

Ordering Example

Part Number	-	D ₁	-	P
KKP10	-	15	-	20
KKQT20	-	15	-	30

D	Unit Price							
	Equal Dia., Parallel				Unequal Dia., Parallel			
	Standard		Thin		Standard		Thin	
	KKP	MKP	AKP	SKP	KKPT	KKQ	KKQT	
8								
10								
12								
15								
20								
25								
30								
35								

■ **Included Screw**

D	Included Screw	
	Equal Dia., Parallel	Unequal Dia., Parallel
8	M5-12, 2pcs.	-
10	M5-15, 2 pcs.	M5-12/M5-10, 1pc. each
12	M5-15, 2 pcs.	M5-15, 2 pcs.
15	M5-20, 4pcs.	M5-20/M5-15, 2pcs. each
20	M6-25, 4pcs.	M6-25/M6-20, 2pcs. each
25	M6-30, 4pcs.	M6-30/M6-20, 2pcs. each
30	M8-35, 4pcs.	M8-35/M8-30, 2pcs. each
35	M8-40, 4pcs.	M8-40/M8-35, 2pcs. each