

# Super Compact Strut Clamps / Resin Compact Strut Clamps

Equal / Unequal Dia., Perpendicular Configuration

Equal Dia., Perpendicular Configuration

■ **Features:** Affordable and compact Strut Clamps.

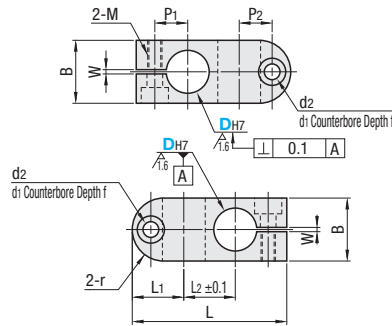
## Super Compact Strut Clamps Equal / Unequal Dia., Perpendicular Configuration



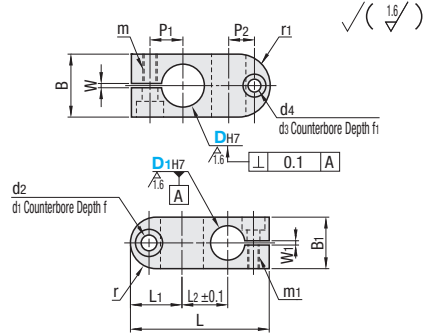
RoHS10

Type		M Material	S Surface Treatment	A Accessory
Equal Dia.	Unequal Dia.	Aluminum Alloy	Black Anodize	Hex Socket Head Cap Screw
ALKC	ALNC		Clear Anodize	
ALKW	ALNW			

Equal Dia., Perpendicular Configuration (ALKC, ALKW)



Unequal Dia., Perpendicular Configuration (ALNC, ALNW)



## Equal Dia., Perpendicular Configuration

Type	Part Number		B	L	L1	L2	r	P1	P2	m	Counterbored Hole			W	Unit Price
	DH7	DH7									d1	d2	f		
ALKC ALKW	6	+0.012 0	10	29	10.5	8	5	6.5	6.5	M3	6.5	3.5	3.5	1	
	8	+0.015 0	12	32	11	10	6	7	7						
	10	+0.018 0	16	39	13.5	12	8	8.5	8.5	M4	8	4.5	4.5		
	12	+0.018 0	18	43	14	15	9	9	9						
	15	+0.018 0	22	54	18	18	11	11.5	11.5		M5	9.5	5.5	5.5	

## Unequal Dia., Perpendicular Configuration

Type	Part Number		D1H7	B	B1	L	L1	L2	r	r1	P1	P2	m	Counterbored Hole			W	m1	Counterbored Hole			W1	Unit Price	
	DH7	DH7												d1	d2	f			d3	d4	f1			ALNC, ALNW
ALNC ALNW	8	+0.015 0	6	+0.012 0	12	10	31.5	11	10	5	6	7	6.5	M3	6.5	3.5	3.5	1	M3	6.5	3.5	3.5	1	
	10	+0.015 0	6	+0.012 0	16	12	37.0	12	6	8	8.5	7	M4	8	4.5	4.5	1.5	M4	8	4.5	4.5	1		
	10	+0.015 0	8	+0.015 0			36.5	12										M3	6.5	3.5	3.5			
	12	+0.018 0	8	+0.015 0	18	14	40.0	14	14	7	9	9	7.5	M4	8	4.5	4.5	1.5	M4	8	4.5	4.5	1	
	12	+0.018 0	10	+0.015 0			39.5	M3	6.5	3.5	3.5	1.5												
	15	+0.018 0	10	+0.015 0	22	18	49.0	18	16	9	11	11.5	9	M5	9.5	5.5	5.5	1.5	M5	9.5	5.5	5.5	1.5	
	15	+0.018 0	12	+0.018 0			48.5	M4	8	4.5	4.5													

⚠ The tolerance and perpendicularity of DH7 and D1H7 are the tolerances before slitting.

⚠ For mating, g6, f8 shaft tolerances are recommended. Tightening with a long wrench is recommended.

Ordering Example

Part Number	-	D1
ALKC8	-	8
ALNC10	-	8

### Included Screw: Equal Dia., Perpendicular Configuration

D	Included Screw	2 pcs.
6	M3-6	
8	M3-8	
10	M4-10	
12	M4-12	
15	M5-15	

### Included Screw: Unequal Dia., Perpendicular Configuration

D	D1	Included Screw	1 pc. each
8	6	M3-6, M3-8	
10	8	M4-6, M4-10	
10	8	M3-8, M4-10	
12	10	M4-8, M4-12	
12	10	M3-10, M4-12	
15	10	M5-12, M5-15	
15	12	M4-12, M5-15	

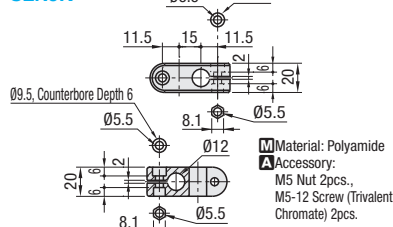
■ **Features:** Affordable Strut Clamps when purchased 10 pcs. or more. Suitable for applications where many are needed, such as for Conveyers, etc. ⚠ For clamps in stand sets for mounting sensors, refer to P2057, 2058

## Resin Compact Strut Clamps Equal Dia., Perpendicular Configuration



RoHS10

### SENJK



⚠ Resin clamps are not suitable for supporting heavy objects.

Ordering Example

Part Number	Unit Price	Volume Discount Rate
SENJK	1 ~ 9 pc(s).	10 ~ 50 pcs.



### Conveyor Guide Mounting

