

Stand-Up Brackets

Economy / Standard

■ **Features:** Affordable Precision Casting Stand-Up Brackets

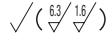
■ **Economy Type**



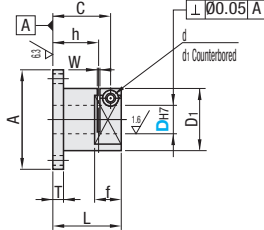
RoHS10

Type		Material	Surface Treatment	Accessory
Compact Flanged	Square Flanged			
TLSB	KLSB	S45C	Black Oxide	Hex Socket Head Cap Screw
TLSM	KLSM		Electroless Nickel Plating	Hex Socket Head Cap Screw (Stainless Steel)
TLSS	KLSS	SUS304	-	-

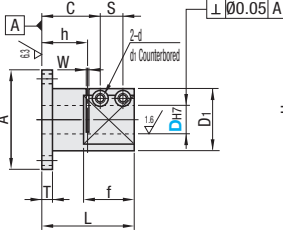
*Hex socket head cap screws are included with D10-15 (1 pc.) and D20-50 (2 pcs.).



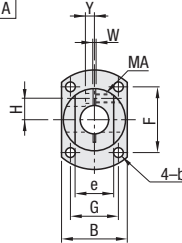
• D Dimension 10 - 15



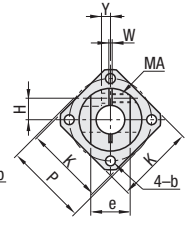
• D Dimension 20 - 50



Compact Flanged



Square Flanged



Part Number	Type	DH7	Unit Price																				
			A	B	L	T	D1	F	G	b	C	S	H	Y	d	d1	MA	h	f	e	W	K	P
10	(Compact Flanged)	+0.015/0	45	28	35	10	26	30	18	4.5	29	-	9.5	3	4.5	8	M4	22	15	14	2	35	36
12	(Compact Flanged)	+0.018/0	50	32	-	-	30	34	22	-	-	-	10.5	3.5	-	-	-	-	-	-	-	38	40
15	(Compact Flanged)	0	58	38	39	12	35	38	26	5.5	32	-	12.5	4	5.5	9.5	M5	24	17	19	-	44	46
20	(Square Flanged)	+0.021/0	64	42	50	12	40	42	30	6.6	33.8	10.5	14	6.5	5.5	9.5	M5	27	25	24	2	50	52
25	(Square Flanged)	0	80	50	60	-	48	54	35	9	41.5	12	17	8	6.6	11	M6	34	28	29	-	62	64
30	(Square Flanged)	0	90	60	70	15	58	58	45	11	47	15	21	8	9	14	M8	38	34	34	-	68	74
35	(Square Flanged)	+0.025/0	100	66	80	15	64	66	48	11	55	16	23	11.5	9	14	M8	44	39	41	3	76	82
40	(Square Flanged)	0	106	72	90	-	70	70	54	-	64	17	26	-	-	-	-	53	40	46	3	80	88
50	(Square Flanged)	0	125	88	110	18	85	80	68	14	77.5	21.0	32	12	11	17.5	M10	65	48	58	-	94	105

- ① For the available sizes, refer to the price list.
- ② The tolerance and perpendicularity of Dh7 are before slitting.
- ③ For mating, g6, f8 shaft tolerances are recommended. For Stand for Posts, see P2143 and P2144. Tightening with a long wrench is recommended.

D	Unit Price					
	Compact Flanged			Square Flanged		
	TLSB	TLSM	TLSS	KLSB	KLSM	KLSS
10						
12						
15						
20						
25						
30						
35						
40						
50						

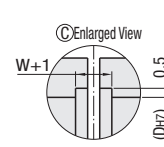
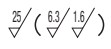
Ordering Example **Part Number**
 Example **TLSB20**

■ **Standard Type**

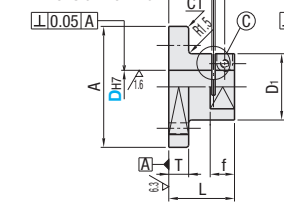


Type	Material	Surface Treatment	Accessory
CLSB	SS400	Black Oxide	Hex Socket Head Cap Screw
CLSM		Electroless Nickel Plating	Hex Socket Head Cap Screw (Stainless Steel)
CLSAM	A6061	Clear Anodize	Hex Socket Head Cap Screw (Stainless Steel)
CLSS	SUS304	-	-

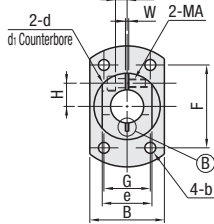
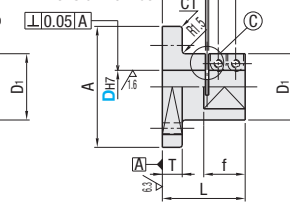
- ④ C section has deburring groove.
- ⑤ Some sections may have slit grooves in.
- * Hex socket head cap screws are included with D10-15 (1 pc.) and D20-50 (2 pcs.).



• D Dimension 10 - 16



• D Dimension 20 - 50



Part Number	Type	DH7	Unit Price																							
			A	B	L	T	D1	F	G	b	C	S	H	Y	d	d1	MA	h	f	e	W	Included Screw	CLSB	CLSM	CLSAM	CLSS
10	(D10-30)	+0.015/0	50	33	35	10	30	35	18	4.5	29	-	10	5	4.5	8	M4	22	15	20	2	M4-15, 1 pc.				
12	(D10-30)	+0.018/0	52	35	-	-	32	37	20	-	-	-	11	-	-	-	-	-	-	-	-	-	-	-	-	-
15	(D10-30)	0	58	40	39	12	35	40	24	5.5	32	-	12.5	6	5.5	10	M5	24	17	25	2	M5-20, 2 pcs.				
20	(D10-30)	+0.021/0	73	45	50	12	40	50	28	6.6	33.8	10.5	14	7	5.5	9.5	M5	27	25	30	2	M5-20, 2 pcs.				
25	(D10-30)	0	93	55	60	-	50	62	36	9	41.5	12	18	10	6.6	11	M6	34	28	35	2	M6-25, 2 pcs.				
30	(D10-30)	0	103	65	70	15	60	72	42	11	47	15	21	10	9	14	M8	38	34	45	2	M8-25, 2 pcs.				
35	(D10-30)	+0.025/0	108	70	80	15	65	75	45	11	55	16	24	10	9	14	M8	44	39	50	3	M8-25, 2 pcs.				
40	(D10-30)	0	118	75	90	-	70	78	55	-	64	17	26	13	-	-	-	53	40	60	3	M8-30, 2 pcs.				
50	(D10-30)	0	138	90	110	18	85	95	60	14	77.5	21	32	16	11	17.5	M10	65	48	70	-	M10-35, 2 pcs.				

- ④ The tolerance and perpendicularity of Dh7 are before slitting. ⑤ D=16 is for CLSB and CLSM only.
- ⑥ For mating, g6, f8 shaft tolerances are recommended. For Stand for Posts, see P2143 and P2144. Tightening with a long wrench is recommended.

Ordering Example **Part Number**
 Example **CLSB20**