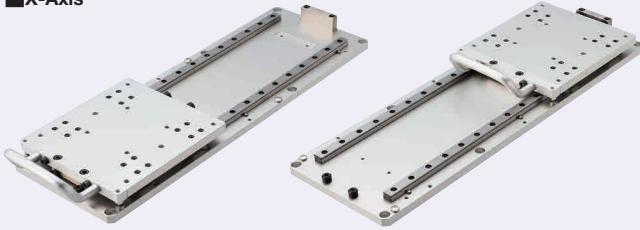


Fixture Slides

Linear Guide Type

Features: Sliders based on linear guides. By adopting those linear guides, the sliders achieve smooth sliding motion and thus, are suitable for applications frequently repeated.

X-Axis



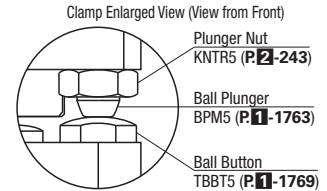
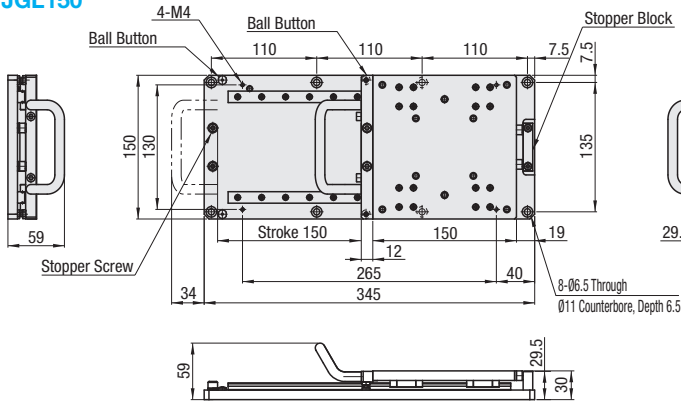
Tips

Only on JGL250, by repositioning the ball buttons and stroke end stopper screws, the stroke can be shortened. Shortening the stroke can prevent the handle from protruding from the base plate O.D.

For how to adjust the stroke, see the Stroke Adjustment Method Table.

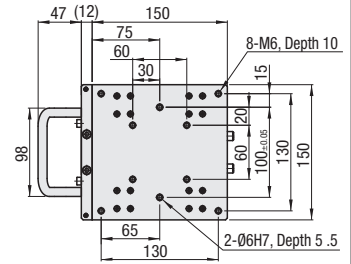
When plunger locking in the front side is not needed, remove the ball buttons.

JGL150

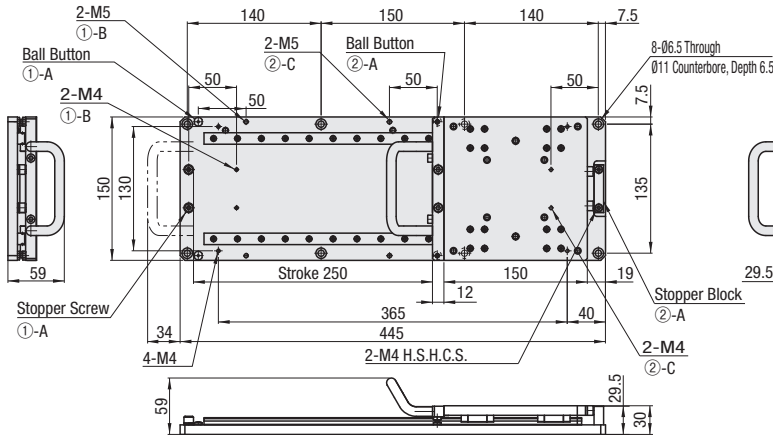


By fitting the plunger tip ball in the depressed part of the ball button, the table is fixed.

Table Dimensions (Common)



JGL250



Main Body	Material	Surface Treatment
Table	Aluminum Alloy	Clear Anodize
Base Plate	Aluminum Alloy	Clear Anodize
Knob	Aluminum Alloy	Clear Anodize
Handle Bracket	Aluminum Alloy	Clear Anodize
Linear Guide	Stainless Steel	-
Stopper Block	S45C	Electroless Nickel Plating

Stroke Adjustment Method

Stroke after adjustment	Mounting Positions of Stopper Parts	
	① Pulling Side	② Pushing Side
250 (before shipping)	A	A
200	B	A
200	A	C
150	B	C

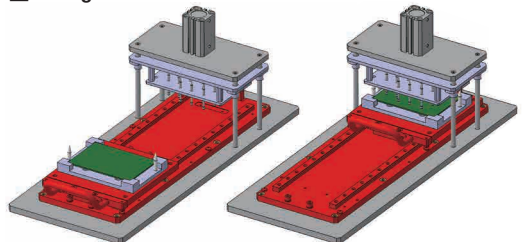
Only on JGL250, by recombining the stopper part mounting hole positions on the above two sides, the stroke can be changed.

Part Number	Stroke (mm)	Table Size (mm)	Base Length (mm)	(Ref. Value) Required Thrust (N)	(Ref. Value) Plunger Holding Force (N)	Load Capacity (kN)	Weight (kg)	Unit Price
JGL 150	150	150x150	345	2	23	4.5	2.8	
JGL 250	150, 200, 250	150x150	445	2	23	4.5	3.4	

- Upon delivery, the stroke is set to 250 for JGL250.
- Required Thrust: Force required to move the table by using the knob
- Load Capacity: Max. allowable value of load applied vertically to the table surface
- Values on the (Ref. Value) columns in the above table are measured when no load is applied.



Testing Electronic Board



Ordering Example
Part Number
JGL250