

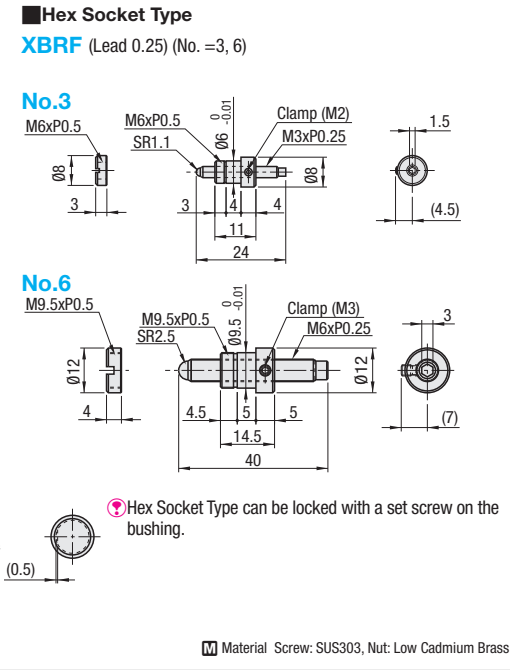
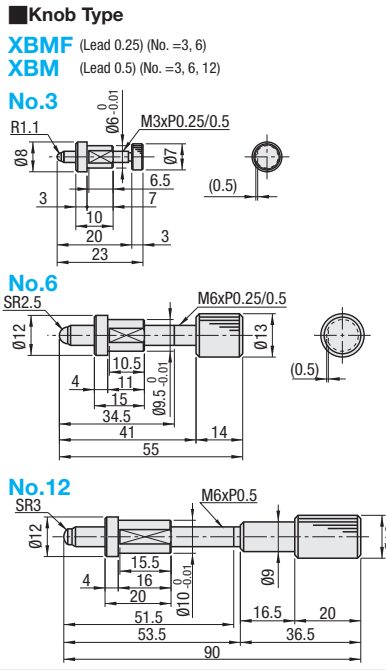
# Stage Maintenance Parts

## Feed Screws / Clamp Screws with Levers / Vernier Scale

■ **Features:** Precision finished screw/bushing fits minimizes play.



■ **Feed Screw**



| Feed Screw                | Part Number (Lead) Type No.           | Stroke | Linear Ball Slide Type / Cross Roller Type Applicable Stage Surface Size | Weight (g) |
|---------------------------|---------------------------------------|--------|--|------------|
| With Knob                 | (0.25) <b>XBMF</b> (* only) <b>3*</b> | ±3.2   | 25 Square  | 5          |
|                           | (0.5) <b>XBM</b> <b>6*</b>            | ±6.5   | 40 ~ 80 square   | 30         |
|                           | (0.5) <b>XBM</b> <b>12</b>            | ±12.5  | 100/120 Square   | 50         |
| Hex Socket Head Cap Screw | (0.25) <b>XBRF</b> <b>3</b>           | ±3.2   | 25 Square  | 5          |
|                           | (0.25) <b>XBRF</b> <b>6</b>           | ±6.5   | 40 ~ 80 square   | 15         |

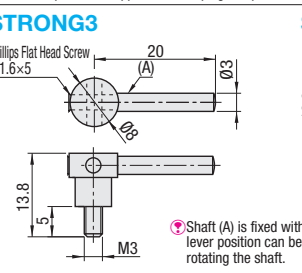
| Part Number Type No. | Unit Price 1 ~ 10 pc(s). |  |
|----------------------|--------------------------|--|
| <b>XBM</b>           | <b>3</b>                 |  |
|                      | <b>6</b>                 |  |
|                      | <b>12</b>                |  |
|                      | <b>12</b>                |  |

⚠ A dedicated wrench is included with XBRF.

| Part Number Type No. | Unit Price 1 ~ 2 pc(s). | Volume Discount Rate 3 ~ 10 pcs. |
|----------------------|-------------------------|----------------------------------|
| <b>XBMF</b>          | <b>3</b>                |                                  |
|                      | <b>6</b>                |                                  |
| <b>XBRF</b>          | <b>3</b>                |                                  |
|                      | <b>6</b>                |                                  |

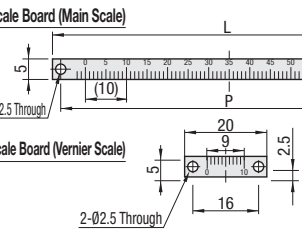
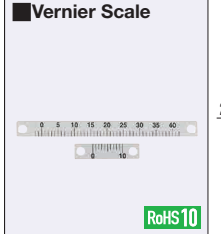
Ordering Example Part Number **XBMF3**

■ **Features:** Clamp Screws with Levers. More torque can be applied for clamping compared to the standard clamp screws. Dovetail slide stage clamps can be reinforced.



| Type           | No.       | Applicable Stage   |
|----------------|-----------|--|
| <b>STRONG</b>  | <b>3</b>  | XLWG (P:1908), XSLC (P:1900), XSC (P:1899), XSSLC (P:1902)           |
|                | <b>3W</b> | XWG (P:1904), XSL (P:1900), XSL (P:1901), XSP (P:1904), XSB (P:1906) |
|                | <b>4</b>  | XLONG (P:1909)   |
| <b>STRONG4</b> |           |  |

■ Material: Lever: Stainless Steel, Screw: Low Cadmium Brass



| Type        | No.        | L   | P   | Applicable Stage                        |
|-------------|------------|-----|-----|---|
| <b>VNIR</b> | <b>40</b>  | 36  | 32  | XLWG, XYWG, XSL, XSLC, XSC, XSSL, XSSLC |
|             | <b>60</b>  | 56  | 52  | XSL, XSLC, XSC, XSSL, XSSLC             |
|             | <b>90</b>  | 86  | 82  | XSL, XSLC, XSC, XSSL, XSSLC             |
|             | <b>140</b> | 136 | 132 | XSL, XSLC, XSC, XSSL, XSSLC             |

⚠ Resolution: 0.1mm  
 ⚠ See the XY Stage Overview pages for vernier scale reading instructions. ■ P:1890  
 ⚠ Accessory: Cross Recessed Pan Head Screw M2 x 3L (P = 0.4), 4 pcs.

■ Material: A1050

Ordering Example Part Number **STRONG3 VNIR60**

| Part Number Type No. | Unit Price 1 ~ 4 pc(s). | Volume Discount Rate 5 ~ 7 pcs. 8 ~ 10 pcs. |
|----------------------|-------------------------|---|
| <b>STRONG</b>        | <b>3</b>                |   |
|                      | <b>3W</b>               |   |
|                      | <b>4</b>                |   |

| Part Number Type No. | Unit Price 1 ~ 10 pc(s). |  |
|----------------------|--------------------------|--|
| <b>VNIR</b>          | <b>40</b>                |  |
|                      | <b>60</b>                |  |
|                      | <b>90</b>                |  |
|                      | <b>140</b>               |  |

| Part Number Type No. | Unit Price 1 ~ 10 pc(s). |  |
|----------------------|--------------------------|--|
| <b>VNIR</b>          | <b>40</b>                |  |
|                      | <b>60</b>                |  |
|                      | <b>90</b>                |  |
|                      | <b>140</b>               |  |

⚠ For orders larger than indicated quantity, please request a quotation.