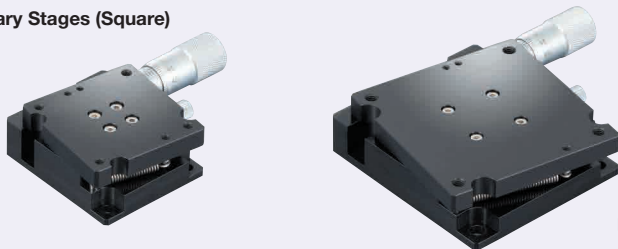


■ Features: Best suited for fine angle adjustments.

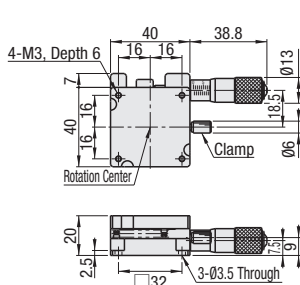
■ Rotary Stages (Square)



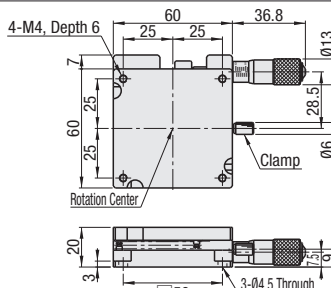
▲ Accessory: SUS Hex Socket Low Head Cap Screws
RTSS40 (M3-6, 3 pcs.)
RTSS60 (M4-8, 3 pcs.)

RoHS10

RTSS40



RTSS60



M Material: Aluminum Alloy
S Surface Treatment: Black Anodize

Part Number		Stage Surface (mm)	Travel Distance (°)	Load Capacity (N)	Resolution ("/Scale)	Parallelism (µm)	Weight (kg)	Unit Price 1 ~ 4 pc(s).
Type	No.							
RTSS	40	40x40	±10	9.8	≈ 1'51"	50	0.14	
	60	60x60		29.4	≈ 1'12"		0.26	

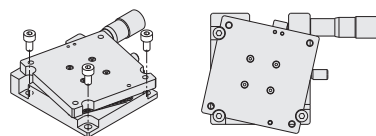


Ordering Example

Part Number
RTSS40

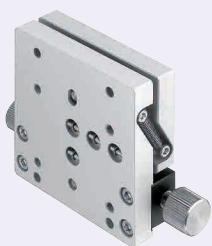


How to Mount Rotary Stages
Move the carriage to gain access to the mounting holes. (mounted at 3 locations)
See illustrations below.



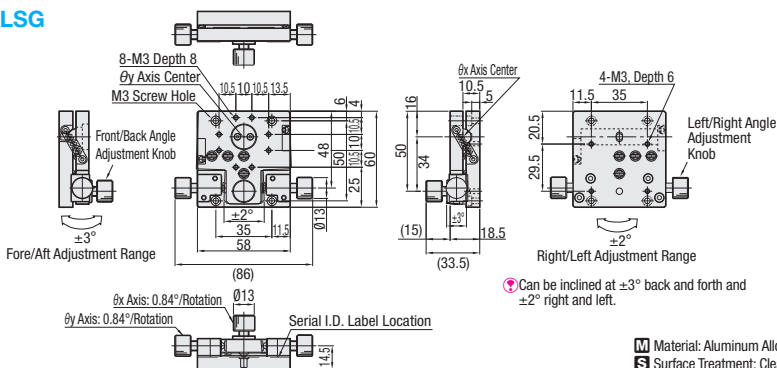
■ Features: Can be used to adjust in tilt direction (2 directions).

■ Tilt Stages



RoHS10

TLSG



M Material: Aluminum Alloy
S Surface Treatment: Clear Anodize

Part Number	Load Capacity (N)	Weight (kg)	Accessory: Hex Socket Head Cap Screw (Stainless Steel)	Unit Price
TLSG	9.8	0.22	M3x10 (4 pcs.)	



Ordering Example

Part Number
TLSG

⚠ For orders larger than indicated quantity, please request a quotation.

🔗 See our website for Strut Clamps (TLSC), Rod Adapters (TLRA) and Camera Mounting Adapters for Tilt Stages.

🔗 Tips: How to Mount Tilt Stages

- Counterbore Hole Mounting
- M3 Screw Hole Mounting



Example Camera Angle Adjustment

