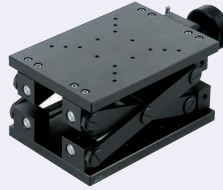


# [High Precision] Lab Jack Horizontal Surface Z-Axis Stages

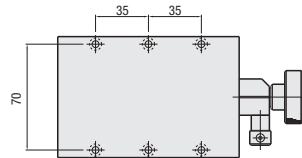
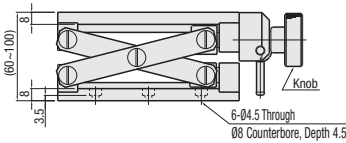
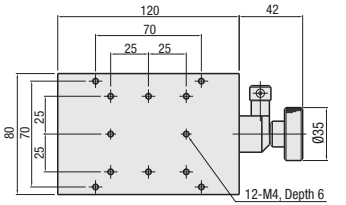
## High Load Capacity

**Features:** Suitable for Z-axis applications requiring long stroke adjustments.

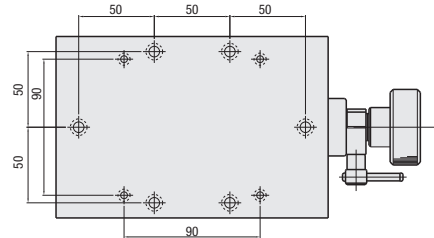
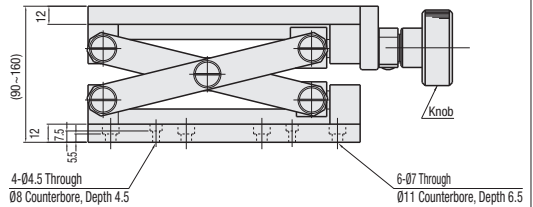
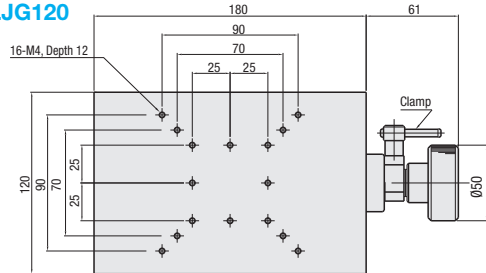
### Lab Jack (Horizontal Surface Z-Axis)



#### ZLJG80



#### ZLJG120



🔴 Knob operated elevating table with relatively high load capacity. A split clamp on the operating shaft securely holds the load in position.

🔴 Clockwise rotation of the knob elevates the stage surface.

**M** Material: Aluminum Alloy

**S** Surface Treatment: Black Anodize

**A** Accessory: Hex Socket Head Cap Screw (Stainless Steel)

ZLJG80: SCB4-10 (6 pcs.)

ZLJG120: SCB4-12, SCB6-12 (4 pcs. each)

Part Number	Stage Surface	Travel Distance	Travel per Rotation	Load Capacity	Parallelism	Weight	Unit Price
Type	No.	(mm)	(mm)	(N)	( $\mu\text{m}$ )	(kg)	
ZLJG	80	80x120	40	68.6	200 $\mu\text{m}$	1.25	
	120	120x180	70	98.0		3.50	

\* The travel distance per knob rotation varies to some extent depending on the current table position.



Ordering Example  
Part Number  
ZLJG80